


Anti-FOXA2 antibody ab23630

★★★★★ [2 Abreviews](#) [8 References](#) [画像数 3](#)

製品の概要

製品名	Anti-FOXA2 antibody
製品の詳細	Rabbit polyclonal to FOXA2
由来種	Rabbit
アプリケーション	適用あり: WB, ICC/IF
種交差性	交差種: Mouse, Human 交差が予測される動物種: Rat, Chicken, Zebrafish 
免疫原	Synthetic peptide corresponding to Human FOXA2 aa 400 to the C-terminus (C terminal) conjugated to keyhole limpet haemocyanin. (Peptide available as ab25739)
ポジティブ・コントロール	This antibody gave a positive signal in the following lysates: HepG2 Nuclear and Mouse Liver
特記事項	<p>The Life Science industry has been in the grips of a reproducibility crisis for a number of years. Abcam is leading the way in addressing this with our range of recombinant monoclonal antibodies and knockout edited cell lines for gold-standard validation. Please check that this product meets your needs before purchasing.</p> <p>If you have any questions, special requirements or concerns, please send us an inquiry and/or contact our Support team ahead of purchase. Recommended alternatives for this product can be found below, along with publications, customer reviews and Q&As</p>

製品の特性

製品の状態	Liquid
保存方法	Shipped at 4°C. Store at +4°C short term (1-2 weeks). Upon delivery aliquot. Store at -20°C or -80°C. Avoid freeze / thaw cycle.
バッファー	pH: 7.40 Preservative: 0.02% Sodium azide Constituent: PBS
精製度	Batches of this product that have a concentration < 1mg/ml may have BSA added as a stabilising agent. If you would like information about the formulation of a specific lot, please contact our scientific support team who will be happy to help.
	Immunogen affinity purified

ポリ/モノ
アイソタイプ

ポリクローナル
IgG

アプリケーション

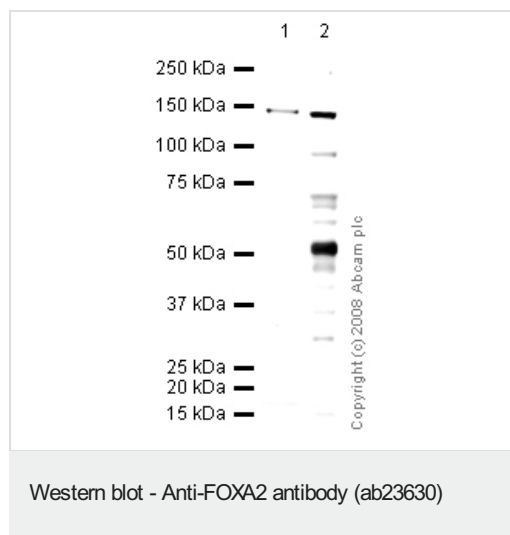
The Abpromise guarantee **Abpromise保証は、** 次のテスト済みアプリケーションにおけるab23630の使用に適用されます
アプリケーションノートには、推奨の開始希釈率がありますが、適切な希釈率につきましてはご検討ください。

アプリケーション	Abreviews	特記事項
WB		Use a concentration of 1 µg/ml. Detects a band of approximately 52 kDa (predicted molecular weight: 48 kDa).
ICC/IF		Use a concentration of 5 µg/ml.

ターゲット情報

機能	Transcription factor that is involved in embryonic development, establishment of tissue-specific gene expression and regulation of gene expression in differentiated tissues. Is thought to act as a 'pioneer' factor opening the compacted chromatin for other proteins through interactions with nucleosomal core histones and thereby replacing linker histones at target enhancer and/or promoter sites. Binds DNA with the consensus sequence 5'-[AC]A[AT]T[AG]TT[GT][AG][CT]T[CT]-3' (By similarity). In embryonic development is required for notochord formation. Involved in the development of multiple endoderm-derived organ systems such as the liver, pancreas and lungs; FOXA1 and FOXA2 seem to have at least in part redundant roles. Originally described as a transcription activator for a number of liver genes such as AFP, albumin, tyrosine aminotransferase, PEPCK, etc. Interacts with the cis-acting regulatory regions of these genes. Involved in glucose homeostasis; regulates the expression of genes important for glucose sensing in pancreatic beta-cells and glucose homeostasis. Involved in regulation of fat metabolism. Binds to fibrinogen beta promoter and is involved in IL6-induced fibrinogen beta transcriptional activation.
配列類似性	Contains 1 fork-head DNA-binding domain.
翻訳後修飾	Phosphorylation on Thr-156 abolishes binding to target promoters and subsequent transcription activation upon insulin stimulation.
細胞内局在	Nucleus. Cytoplasm. Shuttles between the nucleus and cytoplasm in a CRM1-dependent manner and in response to insulin signaling via AKT1 is exported from the nucleus.

画像



All lanes : Anti-FOXA2 antibody (ab23630) at 1 µg/ml

Lane 1 : HepG2 (Human hepatocellular liver carcinoma cell line)

Whole Cell Lysate

Lane 2 : Hep G2 nuclear extract lysate ([ab14660](#))

Lysates/proteins at 10 µg per lane.

Secondary

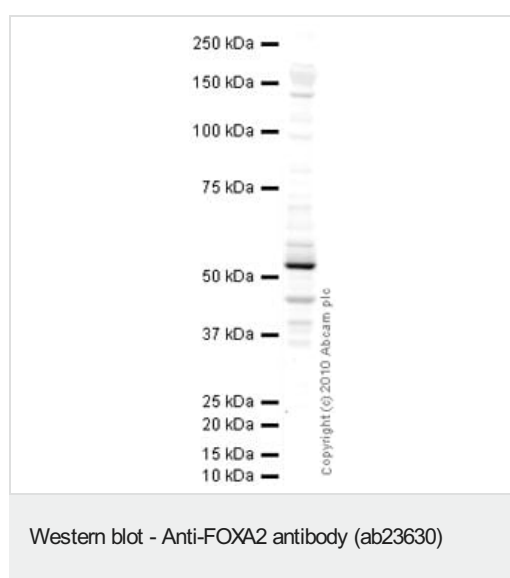
All lanes : Goat polyclonal to Rabbit IgG - H&L - Pre-Adsorbed (HRP) at 1/3000 dilution

Performed under reducing conditions.

Predicted band size: 48 kDa

Observed band size: 52 kDa

Additional bands at: 140 kDa. We are unsure as to the identity of these extra bands.



Anti-FOXA2 antibody (ab23630) at 1 µg/ml + Liver (Mouse) Tissue Lysate at 10 µg

Secondary

Goat polyclonal to Rabbit IgG - H&L - Pre-Adsorbed (HRP) at 1/3000 dilution

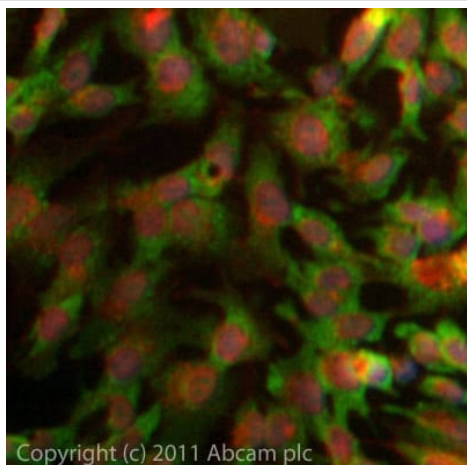
Developed using the ECL technique.

Performed under reducing conditions.

Predicted band size: 48 kDa

Observed band size: 52 kDa

Exposure time: 8 minutes



Immunocytochemistry/ Immunofluorescence - Anti-FOXA2 antibody (ab23630)

ICC/IF image of ab23630 stained HepG2 cells. The cells were 4% PFA fixed (10 min) and then incubated in 1%BSA / 10% normal goat serum / 0.3M glycine in 0.1% PBS-Tween for 1h to permeabilise the cells and block non-specific protein-protein interactions. The cells were then incubated with the antibody (ab23630, 5µg/ml) overnight at +4°C. The secondary antibody (green) was **ab96899** Dylight 488 goat anti-rabbit IgG (H+L) used at a 1/250 dilution for 1h. Alexa Fluor® 594 WGA was used to label plasma membranes (red) at a 1/200 dilution for 1h. DAPI was used to stain the cell nuclei (blue) at a concentration of 1.43µM.

Please note: All products are "FOR RESEARCH USE ONLY. NOT FOR USE IN DIAGNOSTIC PROCEDURES"

Our Abpromise to you: Quality guaranteed and expert technical support

- Replacement or refund for products not performing as stated on the datasheet
- Valid for 12 months from date of delivery
- Response to your inquiry within 24 hours
- We provide support in Chinese, English, French, German, Japanese and Spanish
- Extensive multi-media technical resources to help you
- We investigate all quality concerns to ensure our products perform to the highest standards

If the product does not perform as described on this datasheet, we will offer a refund or replacement. For full details of the Abpromise, please visit <https://www.abcam.co.jp/abpromise> or contact our technical team.

Terms and conditions

- Guarantee only valid for products bought direct from Abcam or one of our authorized distributors