


Anti-FOXA1 antibody ab23738

KO 評価済

★★★★☆ 11 Abreviews 156 References 画像数 4

製品の概要

製品名	Anti-FOXA1 antibody
製品の詳細	Rabbit polyclonal to FOXA1
由来種	Rabbit
アプリケーション	適用あり: WB 適用なし: ICC/IF, IHC-FoFr or IHC-P
種交差性	交差種: Human 交差が予測される動物種: Mouse, Rat, Xenopus laevis 
免疫原	Synthetic peptide within Human FOXA1 aa 450 to the C-terminus (C terminal) conjugated to keyhole limpet haemocyanin. The exact sequence is proprietary. Database link: P55317 (Peptide available as ab25752)
特記事項	<p>The Life Science industry has been in the grips of a reproducibility crisis for a number of years. Abcam is leading the way in addressing this with our range of recombinant monoclonal antibodies and knockout edited cell lines for gold-standard validation. Please check that this product meets your needs before purchasing.</p> <p>If you have any questions, special requirements or concerns, please send us an inquiry and/or contact our Support team ahead of purchase. Recommended alternatives for this product can be found below, along with publications, customer reviews and Q&As</p>

製品の特性

製品の状態	Liquid
保存方法	Shipped at 4°C. Store at +4°C short term (1-2 weeks). Upon delivery aliquot. Store at -20°C or -80°C. Avoid freeze / thaw cycle.
バッファー	pH: 7.40 Preservative: 0.02% Sodium azide Constituent: PBS

Batches of this product that have a concentration < 1mg/ml may have BSA added as a stabilising agent. If you would like information about the formulation of a specific lot, please contact our

scientific support team who will be happy to help.

精製度	Immunogen affinity purified
ポリ/モノ	ポリクローナル
アイソタイプ	IgG

アプリケーション

The Abpromise guarantee **Abpromise保証は、次のテスト済みアプリケーションにおけるab23738の使用に適用されず**
アプリケーションノートには、推奨の開始希釈率がありますが、適切な希釈率につきましてはご検討ください。

アプリケーション	Abreviews	特記事項
WB	★★★★☆ (5)	Use a concentration of 0.7 - 1 µg/ml. Detects a band of approximately 51 kDa (predicted molecular weight: 49 kDa).

追加情報 Is unsuitable for ICC/IF, IHC-FoFr or IHC-P.

ターゲット情報

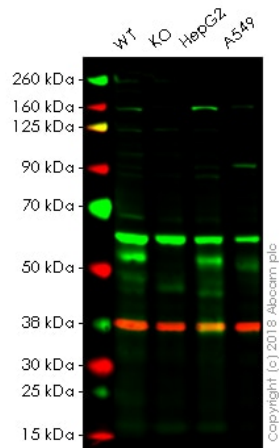
機能 Transcription factor that is involved in embryonic development, establishment of tissue-specific gene expression and regulation of gene expression in differentiated tissues. Is thought to act as a 'pioneer' factor opening the compacted chromatin for other proteins through interactions with nucleosomal core histones and thereby replacing linker histones at target enhancer and/or promoter sites. Binds DNA with the consensus sequence 5'-[AC]A[AT]T[AG]TT[GT][AG][CT]T[CT]-3' (By similarity). Proposed to play a role in translating the epigenetic signatures into cell type-specific enhancer-driven transcriptional programs. Its differential recruitment to chromatin is dependent on distribution of histone H3 methylated at 'Lys-5' (H3K4me2) in estrogen-regulated genes. Involved in the development of multiple endoderm-derived organ systems such as liver, pancreas, lung and prostate; FOXA1 and FOXA2 seem to have at least in part redundant roles (By similarity). Modulates the transcriptional activity of nuclear hormone receptors. Is involved in ESR1-mediated transcription; required for ESR1 binding to the NKX2-1 promoter in breast cancer cells; binds to the RPRM promoter and is required for the estrogen-induced repression of RPRM. Involved in regulation of apoptosis by inhibiting the expression of BCL2. Involved in cell cycle regulation by activating expression of CDKN1B, alone or in conjunction with BRCA1. Originally described as a transcription activator for a number of liver genes such as AFP, albumin, tyrosine aminotransferase, PEPCK, etc. Interacts with the cis-acting regulatory regions of these genes. Involved in glucose homeostasis.

組織特異性 Highly expressed in prostate and ESR1-positive breast tumors. Overexpressed in esophageal and lung adenocarcinomas.

配列類似性 Contains 1 fork-head DNA-binding domain.

細胞内局在 Nucleus.

画像



Western blot - Anti-FOXA1 antibody - ChIP Grade (ab23738)

All lanes : Anti-FOXA1 antibody (ab23738) at 0.7 $\mu\text{g/ml}$

Lane 1 : Wild-type HAP1 whole cell lysate

Lane 2 : FOXA1 knockout HAP1 whole cell lysate

Lane 3 : HepG2 whole cell lysate

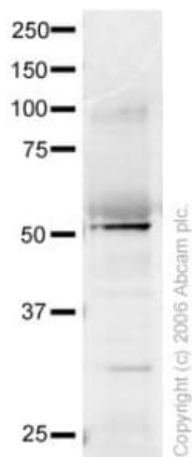
Lane 4 : A549 whole cell lysate

Lysates/proteins at 20 μg per lane.

Predicted band size: 49 kDa

Lanes 1 -4: Merged signal (red and green). Green - ab23738 observed at 49 kDa. Red - loading control, **ab9484**, observed at 37 kDa.

ab23738 was shown to recognize FOXA1 in wild-type HAP1 cells as signal was lost at the expected MW in FOXA1 knockout cells. Additional cross-reactive bands were observed in the wild-type and knockout cells. Wild-type and FOXA1 knockout samples were subjected to SDS-PAGE. Ab23738 and **ab9484** (Mouse anti-GAPDH loading control) were incubated overnight at 4°C at 0.7 $\mu\text{g/ml}$ and 1/20000 dilution respectively. Blots were developed with Goat anti-Rabbit IgG H&L (IRDye® 800CW) preabsorbed **ab216773** and Goat anti-Mouse IgG H&L (IRDye® 680RD) preabsorbed **ab216776** secondary antibodies at 1/20000 dilution for 1 hour at room temperature before imaging.



Western blot - Anti-FOXA1 antibody - ChIP Grade (ab23738)

Anti-FOXA1 antibody (ab23738) at 1 $\mu\text{g/ml}$ + Human heart tissue lysate at 20 μg

Secondary

Goat polyclonal to Rabbit IgG (Alexa Fluor® 680) at 1/10000 dilution

Predicted band size: 49 kDa

Observed band size: 51 kDa

Additional bands at: 31 kDa (possible cleavage fragment), 31 kDa (possible cross reactivity)



Western blot - Anti-FOXA1 antibody - ChIP Grade (ab23738)

Anti-FOXA1 antibody (ab23738) at 1 µg/ml + Recombinant Human FOXA1 protein ([ab98301](#)) at 0.1 µg

Secondary

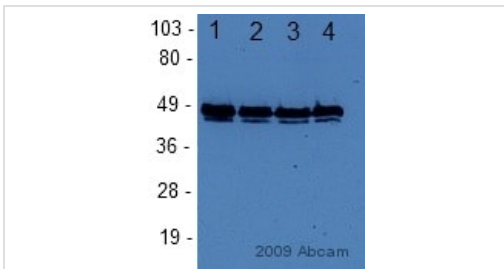
Goat Anti-Rabbit IgG H&L (HRP) preadsorbed ([ab97080](#)) at 1/5000 dilution

Developed using the ECL technique.

Performed under reducing conditions.

Predicted band size: 49 kDa

Exposure time: 10 seconds



Western blot - Anti-FOXA1 antibody - ChIP Grade (ab23738)

This image is a courtesy of Anonymous Abreview

All lanes : Anti-FOXA1 antibody (ab23738) at 1/1000 dilution

Lane 1 : Lysate prepared from human LNCaP cells

Lane 2 : Lysate prepared from MCF7 cells

Lane 3 : Lysate prepared from human LNCaP cells with ethanol as vehicle control

Lane 4 : Lysate prepared from human LNCaP cells with 100 nM DHT

Lysates/proteins at 20 µg per lane.

Secondary

All lanes : HRP-conjugated goat polyclonal to rabbit IgG at 1/5000 dilution

Developed using the ECL technique.

Performed under reducing conditions.

Predicted band size: 49 kDa

Observed band size: 51 kDa

Exposure time: 2 seconds

Please note: All products are "FOR RESEARCH USE ONLY. NOT FOR USE IN DIAGNOSTIC PROCEDURES"

Our Abpromise to you: Quality guaranteed and expert technical support

- Replacement or refund for products not performing as stated on the datasheet
- Valid for 12 months from date of delivery
- Response to your inquiry within 24 hours

- We provide support in Chinese, English, French, German, Japanese and Spanish
- Extensive multi-media technical resources to help you
- We investigate all quality concerns to ensure our products perform to the highest standards

If the product does not perform as described on this datasheet, we will offer a refund or replacement. For full details of the Abpromise, please visit <https://www.abcam.co.jp/abpromise> or contact our technical team.

Terms and conditions

- Guarantee only valid for products bought direct from Abcam or one of our authorized distributors