

Anti-Fluorescein antibody ab6644

画像数 1

製品の概要

製品名	Anti-Fluorescein antibody
製品の詳細	Goat polyclonal to Fluorescein
由来種	Goat
アプリケーション	適用あり: ELISA, WB
種交差性	交差種: Species independent
免疫原	Chemical/ Small Molecule corresponding to Fluorescein. Fluorescein conjugated to Goat IgG
特記事項	<p>The Life Science industry has been in the grips of a reproducibility crisis for a number of years. Abcam is leading the way in addressing this with our range of recombinant monoclonal antibodies and knockout edited cell lines for gold-standard validation. Please check that this product meets your needs before purchasing.</p> <p>If you have any questions, special requirements or concerns, please send us an inquiry and/or contact our Support team ahead of purchase. Recommended alternatives for this product can be found below, along with publications, customer reviews and Q&As</p>

製品の特性

製品の状態	Liquid
保存方法	Shipped at 4°C. Store at +4°C short term (1-2 weeks). Upon delivery aliquot. Store at -20°C or -80°C. Avoid freeze / thaw cycle.
バッファー	Preservative: 0.01% Sodium azide Constituents: 0.42% Potassium phosphate, 0.87% Sodium chloride
精製度	Immunogen affinity purified
特記事項 (精製)	This product was prepared from monospecific antiserum by immunoaffinity chromatography using Fluorescein IgG coupled to agarose beads followed by solid phase adsorption(s) to remove any unwanted reactivities.
ポリ/モノ	ポリクローナル
アイソタイプ	IgG

アプリケーション

The Abpromise guarantee

Abpromise保証は、次のテスト済みアプリケーションにおけるab6644の使用に適用されます

アプリケーションノートには、推奨の開始希釈率がありますが、適切な希釈率につきましてはご検討ください。

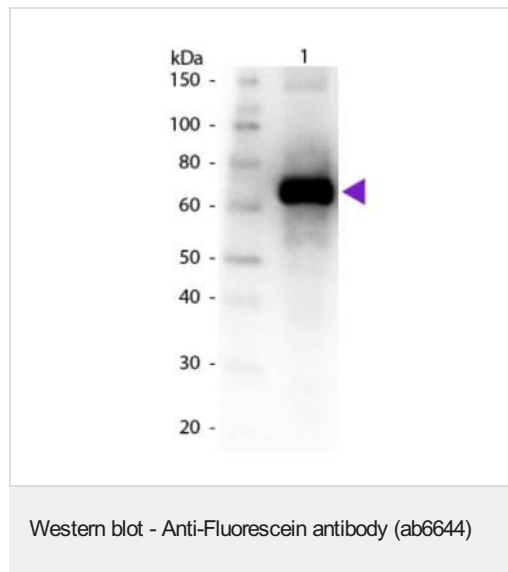
アプリケーション	Abreviews	特記事項
ELISA		Use at an assay dependent concentration.
WB		1/500 - 1/3000.

ターゲット情報

関連性

Fluorescein is a fluorophore commonly used to label proteins - protein-fluorescein conjugates are not usually susceptible to precipitation. In addition to its relatively high absorptivity, excellent fluorescence quantum yield and good water solubility, fluorescein has an excitation maximum of 494 nm that closely matches the 488 nm spectral line of the argon-ion laser, making it an important fluorophore for confocal laser-scanning microscopy and flow cytometry applications. Its fluorescence is pH sensitive and is significantly reduced below pH 7. Fluorescein emits most strongly between 500 and 550 nm, but it has a relatively broad emission spectrum reaching to over 600 nm. Several derivatives of fluorescein are commonly used, including FITC (fluorescein isothiocyanate), carboxylates and succinimidyl esters.

画像



Anti-Fluorescein antibody (ab6644) at 1/1000 dilution + BSA
conjugated Fluorescein at 0.05 µg

Secondary

Goat secondary antibody (HRP) at 1/40000 dilution

Observed band size: 67 kDa

Primary antibody incubated overnight at 4°C.

Secondary antibody incubated for 30 minutes at room temperature.

Please note: All products are "FOR RESEARCH USE ONLY. NOT FOR USE IN DIAGNOSTIC PROCEDURES"

Our Abpromise to you: Quality guaranteed and expert technical support

- Replacement or refund for products not performing as stated on the datasheet
- Valid for 12 months from date of delivery
- Response to your inquiry within 24 hours

- We provide support in Chinese, English, French, German, Japanese and Spanish
- Extensive multi-media technical resources to help you
- We investigate all quality concerns to ensure our products perform to the highest standards

If the product does not perform as described on this datasheet, we will offer a refund or replacement. For full details of the Abpromise, please visit <https://www.abcam.co.jp/abpromise> or contact our technical team.

Terms and conditions

- Guarantee only valid for products bought direct from Abcam or one of our authorized distributors