

Anti-Flavivirus E-glycoprotein antibody [HF8-2/B2-2/E10] ab214333

画像数 4

製品の概要

製品名	Anti-Flavivirus E-glycoprotein antibody [HF8-2/B2-2/E10]
製品の詳細	Mouse monoclonal [HF8-2/B2-2/E10] to Flavivirus E-glycoprotein
由来種	Mouse
特異性	This monoclonal antibody reacts with a conformational epitope present in DENV1, 2, 3, 4, ZIKV, JEV and WNV.
アプリケーション	適用あり: WB, Sandwich ELISA, ICC/IF
種交差性	交差種: Dengue virus 1, Dengue virus 2, Dengue virus 3, Dengue virus 4, Japanese encephalitis virus, West Nile virus, Zika virus
免疫原	Recombinant full length protein corresponding to Dengue Virus 1 Flavivirus E-glycoprotein aa 281-775. Database link: P27909
ポジティブ・コントロール	WB: DENV1 (Hawaii), DENV2 (NGC), DENV3 (H89), DENV4 (H241), ZIKV (Cambodia), JEV (Nakayama), WNV (E101) infected C6/36 cell lysates; ICC/IF: DENV1, DENV2, DENV3, DENV4 and ZIKV infected cells. Sandwich ELISA: DENV1, DENV2 (NGC), DENV2 (16681) DENV3, DENV4, JEV.
特記事項	<p>The Life Science industry has been in the grips of a reproducibility crisis for a number of years. Abcam is leading the way in addressing this with our range of recombinant monoclonal antibodies and knockout edited cell lines for gold-standard validation. Please check that this product meets your needs before purchasing.</p> <p>If you have any questions, special requirements or concerns, please send us an inquiry and/or contact our Support team ahead of purchase. Recommended alternatives for this product can be found below, along with publications, customer reviews and Q&As</p>

製品の特性

製品の状態	Liquid
保存方法	Shipped at 4°C. Store at +4°C short term (1-2 weeks). Upon delivery aliquot. Store at -20°C long term. Avoid freeze / thaw cycle.
バッファー	Preservative: 0.1% Proclin 150 Constituents: 10% Fetal Bovine Serum (FBS), 89.9% RPMI 1640

精製度	Tissue culture supernatant
ポリ/モノ	モノクローナル
クローン名	HF8-2/B2-2/E10
アイソタイプ	IgG1
軽鎖の種類	kappa

アプリケーション

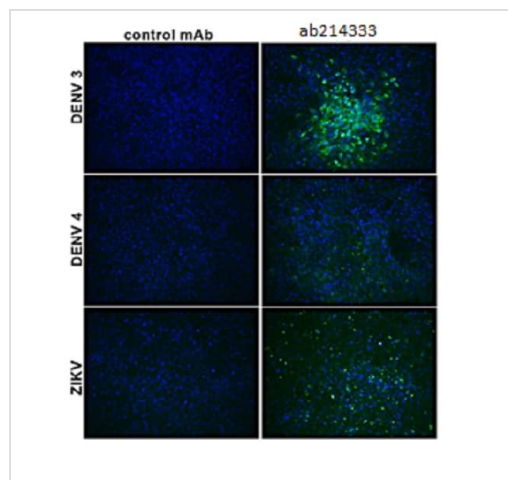
The Abpromise guarantee **Abpromise保証は、次のテスト済みアプリケーションにおけるab214333の使用に適用されます**
 アプリケーションノートには、推奨の開始希釈率がありますが、適切な希釈率につきましてはご確認ください。

アプリケーション	Abreviews	特記事項
WB		Use at an assay dependent concentration.
Sandwich ELISA		Use at an assay dependent concentration.
ICC/IF		Use at an assay dependent concentration.

ターゲット情報

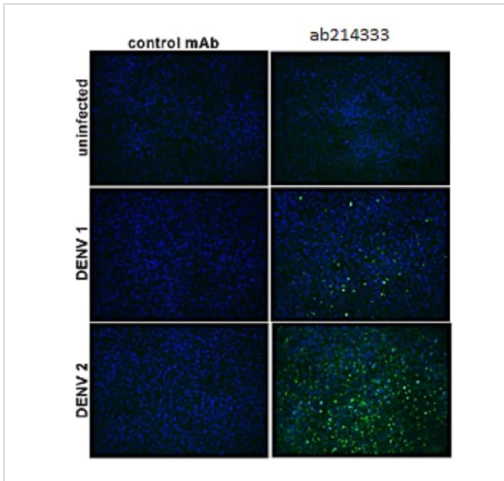
関連性 The Flaviviridae are a family of viruses that are primarily spread through arthropod vectors (mainly ticks and mosquitoes). Flaviviridae have monopartite, linear, single-stranded RNA genomes of positive polarity, 9.6- to 12.3-kilobase in length with enveloped and spherical virus particles, about 40-60 nm in diameter.

画像



Immunofluorescent analysis of DENV3, DENV4 and ZIKV infected cells labeling Flavivirus E-glycoprotein using ab214333 or an antibody control.

Immunocytochemistry/ Immunofluorescence - Anti-Flavivirus E-glycoprotein antibody [HF8-2/B2-2/E10] (ab214333)



Immunocytochemistry/ Immunofluorescence - Anti-Flavivirus E-glycoprotein antibody [HF8-2/B2-2/E10] (ab214333)

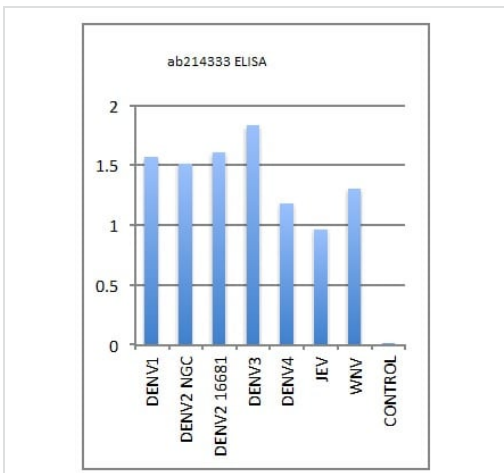
Immunofluorescent analysis of DENV1, DENV2 infected and uninfected cells labeling Flavivirus E-glycoprotein using ab214333 or an antibody control.



Western blot - Anti-Flavivirus E-glycoprotein antibody [HF8-2/B2-2/E10] (ab214333)

All lanes : Anti-Flavivirus E-glycoprotein antibody [HF8-2/B2-2/E10] (ab214333)

- Lane 1 :** DENV1 (Hawaii) infected C6/36 cell lysate
- Lane 2 :** DENV2 (NGC) infected C6/36 cell lysate
- Lane 3 :** DENV3 (H89) infected C6/36 cell lysate
- Lane 4 :** DENV4 (H241) infected C6/36 cell lysate
- Lane 5 :** ZIKV (Cambodia) infected C6/36 cell lysate
- Lane 6 :** JEV (Nakayama) infected C6/36 cell lysate
- Lane 7 :** YFV (17D) infected C6/36 cell lysate
- Lane 8 :** WNV (E101) infected C6/36 cell lysate
- Lane 9 :** C6/36 cell lysate uninfected control



Sandwich ELISA - Anti-Flavivirus E-glycoprotein antibody [HF8-2/B2-2/E10] (ab214333)

Sandwich ELISA analysis of Flavivirus E-glycoprotein expression in DENV1, DENV2 (NGC), DENV2 (16681) DENV3, DENV4, JEV and control using ab214333 as capture antibody.

Please note: All products are "FOR RESEARCH USE ONLY. NOT FOR USE IN DIAGNOSTIC PROCEDURES"

Our Abpromise to you: Quality guaranteed and expert technical support

- Replacement or refund for products not performing as stated on the datasheet
- Valid for 12 months from date of delivery
- Response to your inquiry within 24 hours

- We provide support in Chinese, English, French, German, Japanese and Spanish
- Extensive multi-media technical resources to help you
- We investigate all quality concerns to ensure our products perform to the highest standards

If the product does not perform as described on this datasheet, we will offer a refund or replacement. For full details of the Abpromise, please visit <https://www.abcam.co.jp/abpromise> or contact our technical team.

Terms and conditions

- Guarantee only valid for products bought direct from Abcam or one of our authorized distributors