

Anti-Flavivirus E-glycoprotein antibody [HF8-1/C1-6/E12] ab214335

画像数 4

製品の概要

製品名	Anti-Flavivirus E-glycoprotein antibody [HF8-1/C1-6/E12]
製品の詳細	Mouse monoclonal [HF8-1/C1-6/E12] to Flavivirus E-glycoprotein
由来種	Mouse
特異性	ab214335 reacts with a conformational epitope present in DENV1, 2, 3, 4, ZIKV, JEV and WNV.
アプリケーション	適用あり: WB, ICC/IF, ELISA, Sandwich ELISA
種交差性	交差種: Dengue virus 1, Dengue virus 2, Dengue virus 3, Dengue virus 4, Japanese encephalitis virus, West Nile virus, Zika virus
免疫原	Recombinant full length protein corresponding to Dengue virus 1 Flavivirus E-glycoprotein aa 250-800. Database link: P27909
ポジティブ・コントロール	WB: DENV1 (Hawaii), DENV2 (NGC), DENV3 (H89), DENV4 (H241), ZIKV (Cambodia), JEV (Nakayama), WNV (E101) infected C6/36 cell lysates; ICC/IF: DENV1, DENV2, DENV3, DENV4, ZIKV infected cells
特記事項	<p>The Life Science industry has been in the grips of a reproducibility crisis for a number of years. Abcam is leading the way in addressing this with our range of recombinant monoclonal antibodies and knockout edited cell lines for gold-standard validation. Please check that this product meets your needs before purchasing.</p> <p>If you have any questions, special requirements or concerns, please send us an inquiry and/or contact our Support team ahead of purchase. Recommended alternatives for this product can be found below, along with publications, customer reviews and Q&As</p>

 [Run BLAST with](#)

 [Run BLAST with](#)

製品の特性

製品の状態	Liquid
保存方法	Shipped at 4°C. Store at +4°C short term (1-2 weeks). Upon delivery aliquot. Store at -20°C long term. Avoid freeze / thaw cycle.
バッファー	Preservative: 0.1% Proclin 150 Constituents: 10% Fetal Bovine Serum (FBS), 89.9% RPMI 1640
精製度	Tissue culture supernatant

ポリモノ	モノクローナル
クローン名	HF8-1/C1-6/E12
アイソタイプ	IgG1
軽鎖の種類	kappa

アプリケーション

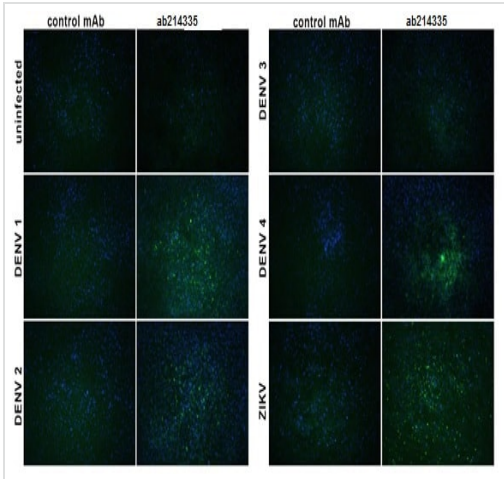
The Abpromise guarantee **Abpromise保証は、次のテスト済みアプリケーションにおけるab214335の使用に適用されず**
 アプリケーションノートには、推奨の開始希釈率がありますが、適切な希釈率につきましてはご検討ください。

アプリケーション	Abreviews	特記事項
WB		Use at an assay dependent concentration. Detects DENV1, 2, 3, 4, ZIKV, JEV and WNV by western blot (non-reducing conditions).
ICC/IF		Use at an assay dependent concentration. Detects DENV1, 2, 4 and ZIKV in immunofluorescence DENV3 and 4 foci in FRNT. Not tested against ZIKV, JEV or WNV for foci staining in FRNT. Can neutralize DENV2, 3, 4 and ZIKV in a standard VERO PRNT. Not tested against JEV and WNV by PRNT.
ELISA		Use at an assay dependent concentration. This monoclonal antibody has been primarily used for the capture/detection of DENV1, 2, 3, 4, ZIKV (data not shown), JEV and WNV antigens in an antigen capture ELISA.
Sandwich ELISA		Use at an assay dependent concentration.

ターゲット情報

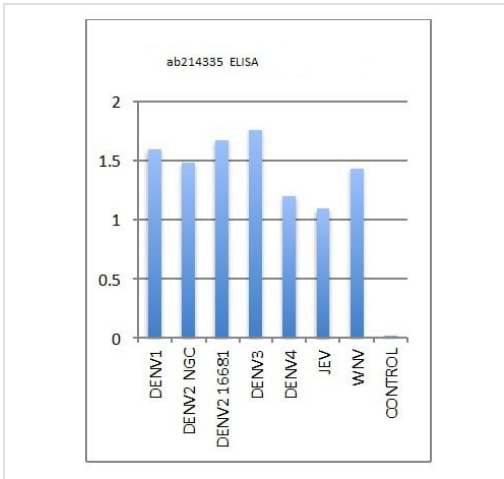
関連性 The Flaviviridae are a family of viruses that are primarily spread through arthropod vectors (mainly ticks and mosquitoes). Flaviviridae have monopartite, linear, single-stranded RNA genomes of positive polarity, 9.6- to 12.3-kilobase in length with enveloped and spherical virus particles, about 40-60 nm in diameter.

画像



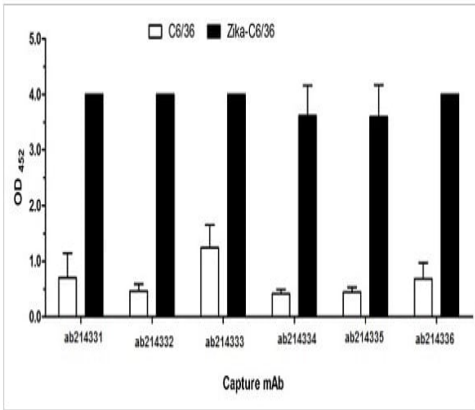
Immunofluorescent analysis of DENV1, DENV2, DENV3, DENV4 and ZIKV infected cells labeling Flavivirus E-glycoprotein using ab214335.

Immunocytochemistry/ Immunofluorescence - Anti-Flavivirus E-glycoprotein antibody [HF8-1/C1-6/E12] (ab214335)



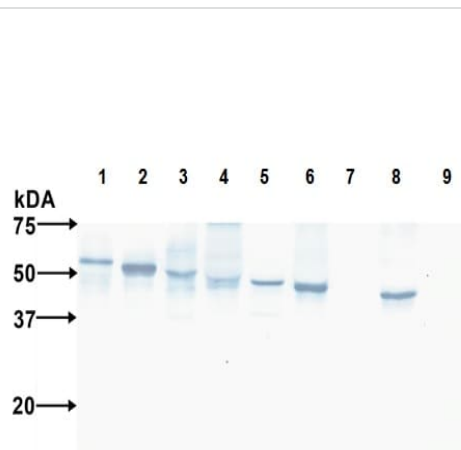
ELISA analysis using Anti-Flavivirus E-glycoprotein antibody [HF8-1/C1-6/E12] (ab214335)

ELISA - Anti-Flavivirus E-glycoprotein antibody [HF8-1/C1-6/E12] (ab214335)



Sandwich ELISA detection Flavivirus E-glycoprotein in Zika infected and non infected C6/36 cells using ab214335 and other anti Flavivirus E-glycoprotein antibodies as capture antibody.

Sandwich ELISA - Anti-Flavivirus E-glycoprotein antibody [HF8-1/C1-6/E12] (ab214335)



All lanes : Anti-Flavivirus E-glycoprotein antibody [HF8-1/C1-6/E12] (ab214335)

Lane 1 : DENV1 (Hawaii) infected C6/36 cell lysate

Lane 2 : DENV2 (NGC) infected C6/36 cell lysate

Lane 3 : DENV3 (H89) infected C6/36 cell lysate

Lane 4 : DENV4 (H241) infected C6/36 cell lysate

Lane 5 : ZIKV (Cambodia) infected C6/36 cell lysate

Lane 6 : JEV (Nakayama) infected C6/36 cell lysate

Lane 7 : YFV (17D) infected C6/36 cell lysate

Lane 8 : WNV (E101) infected C6/36 cell lysate

Lane 9 : C6/36 cell lysate control

Western blot - Anti-Flavivirus E-glycoprotein antibody [HF8-1/C1-6/E12] (ab214335)

Please note: All products are "FOR RESEARCH USE ONLY. NOT FOR USE IN DIAGNOSTIC PROCEDURES"

Our Abpromise to you: Quality guaranteed and expert technical support

- Replacement or refund for products not performing as stated on the datasheet
- Valid for 12 months from date of delivery
- Response to your inquiry within 24 hours
- We provide support in Chinese, English, French, German, Japanese and Spanish

- Extensive multi-media technical resources to help you
- We investigate all quality concerns to ensure our products perform to the highest standards

If the product does not perform as described on this datasheet, we will offer a refund or replacement. For full details of the Abpromise, please visit <https://www.abcam.co.jp/abpromise> or contact our technical team.

Terms and conditions

- Guarantee only valid for products bought direct from Abcam or one of our authorized distributors