



Anti-FKBP51 antibody ab2901

★★★★★ [2 Abreviews](#) [19 References](#) [画像数 3](#)

製品の概要

製品名	Anti-FKBP51 antibody
製品の詳細	Rabbit polyclonal to FKBP51
由来種	Rabbit
アプリケーション	適用あり: WB
種交差性	交差種: Rat, Human
免疫原	Synthetic peptide corresponding to Human FKBP51 aa 394-407. Sequence: CQKKAKEHNERDRR Database link: Q13451 (Peptide available as ab4924)  Run BLAST with  Run BLAST with
ポジティブ・コントロール	WB: K562, HepG2, PC3, HeLa and MCF7 cell lysates; PC-12 and L6 cell lysates; Rat liver, brain, testis and kidney tissue lysates.
特記事項	<p>The Life Science industry has been in the grips of a reproducibility crisis for a number of years. Abcam is leading the way in addressing this with our range of recombinant monoclonal antibodies and knockout edited cell lines for gold-standard validation. Please check that this product meets your needs before purchasing.</p> <p>If you have any questions, special requirements or concerns, please send us an inquiry and/or contact our Support team ahead of purchase. Recommended alternatives for this product can be found below, along with publications, customer reviews and Q&As</p>

製品の特性

製品の状態	Liquid
保存方法	Shipped at 4°C. Store at +4°C short term (1-2 weeks). Upon delivery aliquot. Store at -20°C or -80°C. Avoid freeze / thaw cycle.
バッファー	Preservative: 0.05% Sodium azide Constituents: 0.1% BSA, PBS
精製度	Immunogen affinity purified
ポリ/モノ	ポリクローナル

アプリケーション

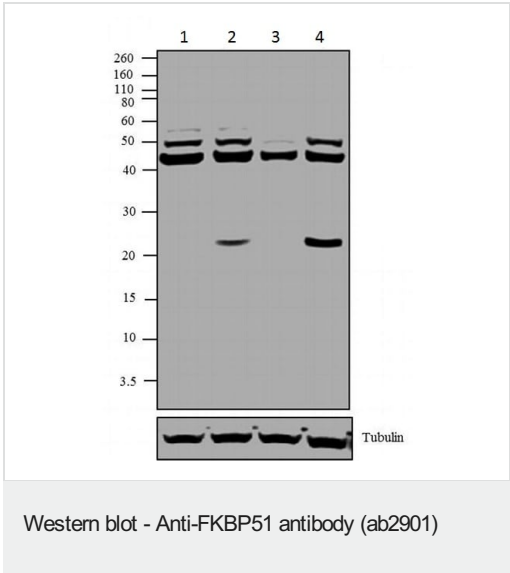
The Abpromise guarantee Abpromise保証は、次のテスト済みアプリケーションにおけるab2901の使用に適用されます
アプリケーションノートには、推奨の開始希釈率がありますが、適切な希釈率につきましてはご検討ください。

アプリケーション	Abreviews	特記事項
WB	★★★★★ (2)	Use a concentration of 1 µg/ml. Detects a band of approximately 51 kDa.

ターゲット情報

機能	Interacts with functionally mature heterooligomeric progesterone receptor complexes along with HSP90 and TEBP.
組織特異性	Widely expressed, enriched in testis compared to other tissues.
配列類似性	Contains 2 PPlase FKBP-type domains. Contains 3 TPR repeats.
翻訳後修飾	Phosphorylated upon DNA damage, probably by ATM or ATR.
細胞内局在	Cytoplasm. Nucleus.

画像



All lanes : Anti-FKBP51 antibody (ab2901) at 2 µg/ml

Lane 1 : K562 (human chronic myelogenous leukemia cell line from bone marrow) nuclear enriched extract

Lane 2 : HepG2 (human liver hepatocellular carcinoma cell line) nuclear enriched extract

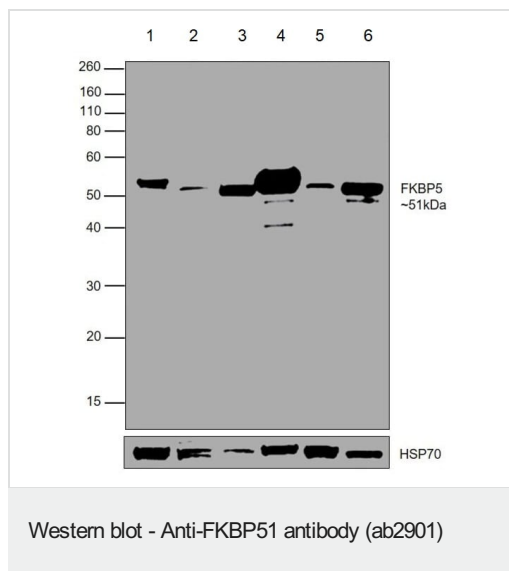
Lane 3 : PC-3 (human prostate adenocarcinoma cell line) nuclear enriched extract

Lane 4 : MCF7 (human breast adenocarcinoma cell line) nuclear enriched extract

Lysates/proteins at 30 µg per lane.

Secondary
All lanes : Goat anti-Rabbit IgG (H+L) at 1/2500 dilution

Approximately 51 and 45 kDa bands corresponding to FKBP51 were observed across cell lines tested



All lanes : Anti-FKBP51 antibody (ab2901) at 1 µg/ml

Lane 1 : PC-12 (Rat adrenal gland pheochromocytoma cell line) whole cell lysate

Lane 2 : L6 (Rat skeletal muscle cell line) whole cell lysate

Lane 3 : Rat liver tissue lysate

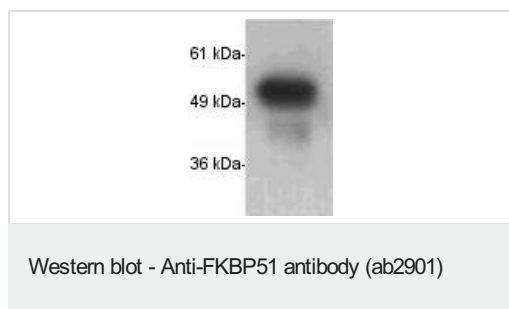
Lane 4 : Rat brain tissue lysate

Lane 5 : Rat testis tissue lysate

Lane 6 : Rat kidney tissue lysate

Lysates/proteins at 30 µg per lane.

Western blot was performed using ab2901 and a 51kDa band corresponding to FKBP5 was observed across all the tested cell lines and tissues. Whole cell extracts were electrophoresed using NuPAGE™ 10% Bis-Tris Protein Gel . Resolved proteins were then transferred onto a Nitrocellulose membrane by iBlot® 2 Dry Blotting System. The blot was probed with the primary antibody (1µg/mL) and detected by chemiluminescence with Goat anti-Rabbit IgG (H+L) Superclonal™ Recombinant Secondary Antibody, HRP using the iBright FL 1000. Chemiluminescent detection was performed using Novex® ECL Reagent Kit.



Anti-FKBP51 antibody (ab2901) at 2 µg/ml + HeLa (human epithelial cell line from cervix adenocarcinoma) cell lysate

Please note: All products are "FOR RESEARCH USE ONLY. NOT FOR USE IN DIAGNOSTIC PROCEDURES"

Our Abpromise to you: Quality guaranteed and expert technical support

- Replacement or refund for products not performing as stated on the datasheet
- Valid for 12 months from date of delivery
- Response to your inquiry within 24 hours
- We provide support in Chinese, English, French, German, Japanese and Spanish
- Extensive multi-media technical resources to help you
- We investigate all quality concerns to ensure our products perform to the highest standards

If the product does not perform as described on this datasheet, we will offer a refund or replacement. For full details of the Abpromise, please visit <https://www.abcam.co.jp/abpromise> or contact our technical team.

Terms and conditions

- Guarantee only valid for products bought direct from Abcam or one of our authorized distributors