

Anti-FKBP38 antibody [EPR7441(2)] ab129113

KO 評価済 リコンビナント RabMAb

2 References 画像数 5

製品の概要

| | |
|--------------|---|
| 製品名 | Anti-FKBP38 antibody [EPR7441(2)] |
| 製品の詳細 | Rabbit monoclonal [EPR7441(2)] to FKBP38 |
| 由来種 | Rabbit |
| アプリケーション | 適用あり: WB, ICC/IF, Flow Cyt (Intra) 適用なし: IHC-P or IP |
| 種交差性 | 交差種: Human |
| 免疫原 | Synthetic peptide within Human FKBP38 (N terminal). The exact sequence is proprietary. |
| ポジティブ・コントロール | HeLa cells; 293T, HeLa and Jurkat whole cell lysate (ab7899). |
| 特記事項 | <p>This product is a recombinant monoclonal antibody, which offers several advantages including:</p> <ul style="list-style-type: none">- High batch-to-batch consistency and reproducibility- Improved sensitivity and specificity- Long-term security of supply- Animal-free production <p>For more information see here.</p> <p>Our RabMAb[®] technology is a patented hybridoma-based technology for making rabbit monoclonal antibodies. For details on our patents, please refer to RabMAb[®] patents.</p> <p>Mouse, Rat: We have preliminary internal testing data to indicate this antibody may not react with these species. Please contact us for more information.</p> |

製品の特性

| | |
|-------|---|
| 製品の状態 | Liquid |
| 保存方法 | Shipped at 4°C. Store at -20°C. Stable for 12 months at -20°C. |
| バッファー | pH: 7.20 Preservative: 0.01% Sodium azide Constituents: 9% PBS, 40% Glycerol (glycerin, glycerine), 0.05% BSA, 50% Tissue culture supernatant |
| 精製度 | Tissue culture supernatant |
| ポリ/モノ | モノクローナル |

クローン名 EPR7441(2)
アイソタイプ IgG

アプリケーション

The Abpromise guarantee **Abpromise保証は、** 次のテスト済みアプリケーションにおけるab129113の使用に適用されます
アプリケーションノートには、推奨の開始希釈率がありますが、適切な希釈率につきましてはご確認ください。

| アプリケーション | Abreviews | 特記事項 |
|------------------|-----------|---|
| WB | | 1/1000 - 1/10000. Detects a band of approximately 53 kDa (predicted molecular weight: 45 kDa). |
| ICC/IF | | 1/100 - 1/250. |
| Flow Cyt (Intra) | | 1/20. ab172730 - Rabbit monoclonal IgG, is suitable for use as an isotype control with this antibody. |

追加情報 Is unsuitable for IHC-P or IP.

ターゲット情報

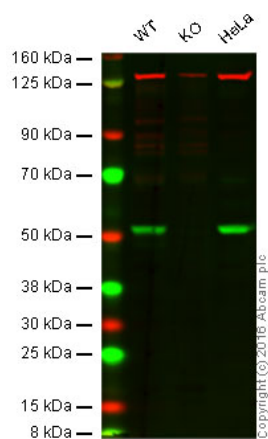
機能 Constitutively inactive PPIase, which becomes active when bound to calmodulin and calcium. Seems to act as a chaperone for BCL2, targets it to the mitochondria and modulates its phosphorylation state. The BCL2/FKBP8/calmodulin/calcium complex probably interferes with the binding of BCL2 to its targets. The active form of FKBP8 may therefore play a role in the regulation of apoptosis.

組織特異性 Widely expressed. Highest levels seen in the brain.

配列類似性 Contains 1 PPlase FKBP-type domain.
Contains 3 TPR repeats.

細胞内局在 Mitochondrion membrane.

画像



Western blot - Anti-FKBP38 antibody [EPR7441(2)] (ab129113)

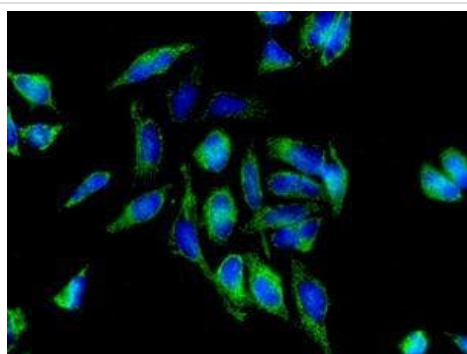
Lane 1: Wild-type HAP1 cell lysate (20 µg)

Lane 2: FKBP38 knockout HAP1 cell lysate (20 µg)

Lane 3: HeLa cell lysate (20 µg)

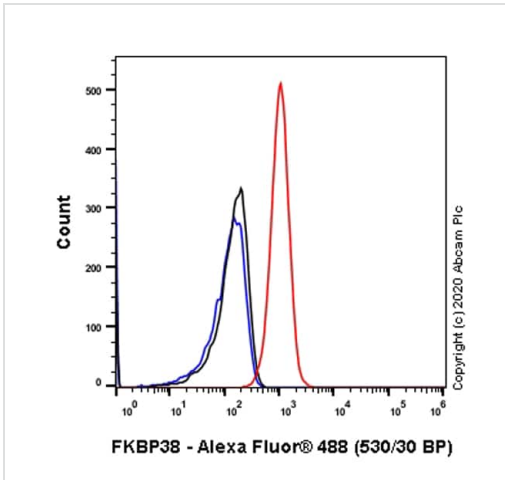
Lanes 1 - 3: Merged signal (red and green). Green - ab129113 observed at 51 kDa. Red - loading control, **ab18058**, observed at 124 kDa.

ab129113 was shown to specifically react with FKBP38 when FKBP38 knockout samples were used. Wild-type and FKBP38 knockout samples were subjected to SDS-PAGE. ab129113 and **ab18058** (loading control to Vinculin) were diluted 1/1000 and 1/10000 respectively and incubated overnight at 4°C. Blots were developed with Goat anti-Rabbit IgG H&L (IRDye® 800CW) preadsorbed (**ab216773**) and Goat anti-Mouse IgG H&L (IRDye® 680RD) preadsorbed (**ab216776**) secondary antibodies at 1/10000 dilution for 1 hour at room temperature before imaging.



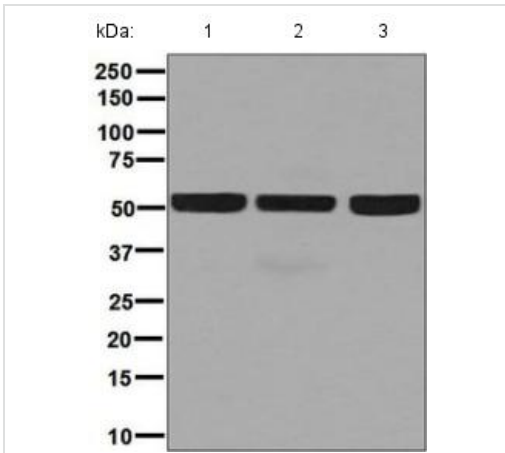
Immunocytochemistry/ Immunofluorescence - Anti-FKBP38 antibody [EPR7441(2)] (ab129113)

ab129113, at 1/100 dilution, staining FKBP38 in HeLa cells by Immunofluorescence.



Flow Cytometry analysis of HeLa (Human cervix adenocarcinoma epithelial cell) cells labeling FKBP38 with ab129113 at 1/20 dilution (10 µg/mL) (Red). Cells were fixed with 4% Paraformaldehyde and permeabilised with 90% Methanol. A Goat anti rabbit IgG (Alexa Fluor® 488, [ab150077](#)) secondary antibody was used at 1/2000. Isotype control - Rabbit monoclonal IgG (Black). Unlabeled control - Cell without incubation with primary antibody and secondary antibody (Blue).

Flow Cytometry (Intracellular) - Anti-FKBP38 antibody [EPR7441(2)] (ab129113)



All lanes : Anti-FKBP38 antibody [EPR7441(2)] (ab129113) at 1/1000 dilution

Lane 1 : HeLa cell lysate

Lane 2 : Jurkat cell lysate

Lane 3 : 293T cell lysate

Lysates/proteins at 10 µg per lane.

Secondary

All lanes : Goat anti-Rabbit HRP at 1/2000 dilution

Predicted band size: 45 kDa

Western blot - Anti-FKBP38 antibody [EPR7441(2)] (ab129113)

Why choose a recombinant antibody?

Research with confidence
Consistent and reproducible results

Long-term and scalable supply
Recombinant technology

Success from the first experiment
Confirmed specificity

Ethical standards compliant
Animal-free production

Anti-FKBP38 antibody [EPR7441(2)] (ab129113)

Please note: All products are "FOR RESEARCH USE ONLY. NOT FOR USE IN DIAGNOSTIC PROCEDURES"

Our Abpromise to you: Quality guaranteed and expert technical support

- Replacement or refund for products not performing as stated on the datasheet
- Valid for 12 months from date of delivery
- Response to your inquiry within 24 hours
- We provide support in Chinese, English, French, German, Japanese and Spanish
- Extensive multi-media technical resources to help you
- We investigate all quality concerns to ensure our products perform to the highest standards

If the product does not perform as described on this datasheet, we will offer a refund or replacement. For full details of the Abpromise, please visit <https://www.abcam.co.jp/abpromise> or contact our technical team.

Terms and conditions

- Guarantee only valid for products bought direct from Abcam or one of our authorized distributors