


### Anti-FKBP15 antibody ab14432

★★★★★ [4 Abreviews](#) [3 References](#) [画像数 2](#)

#### 製品の概要

製品名	Anti-FKBP15 antibody
製品の詳細	Rabbit polyclonal to FKBP15
由来種	Rabbit
アプリケーション	<b>適用あり:</b> WB, IP
種交差性	<b>交差種:</b> Mouse, Human <b>交差が予測される動物種:</b> Horse, Cow, Chimpanzee, Rhesus monkey, Gorilla, Orangutan 
免疫原	Synthetic peptide corresponding to Human FKBP135 aa 50-150. Database link: <a href="#">Q5T1M5</a>
ポジティブ・コントロール	WB: HeLa, HEK-293T and NIH/3T3 whole cell lysates. IP: HeLa whole cell lysate.
特記事項	<p>The Life Science industry has been in the grips of a reproducibility crisis for a number of years. Abcam is leading the way in addressing this with our range of recombinant monoclonal antibodies and knockout edited cell lines for gold-standard validation. Please check that this product meets your needs before purchasing.</p> <p>If you have any questions, special requirements or concerns, please send us an inquiry and/or contact our Support team ahead of purchase. Recommended alternatives for this product can be found below, along with publications, customer reviews and Q&amp;As</p>

#### 製品の特性

製品の状態	Liquid
保存方法	Shipped at 4°C. Upon delivery aliquot and store at -20°C. Avoid freeze / thaw cycles.
バッファー	pH: 7 Preservative: 0.1% Sodium azide Constituents: 0.021% PBS, 1.764% Sodium citrate, 1.815% Tris
精製度	Immunogen affinity purified
特記事項 (精製)	Antibody was purified using an epitope specific to FKBP-15 immobilized on solid support.
ポリ/モノ	ポリクローナル
アイソタイプ	IgG

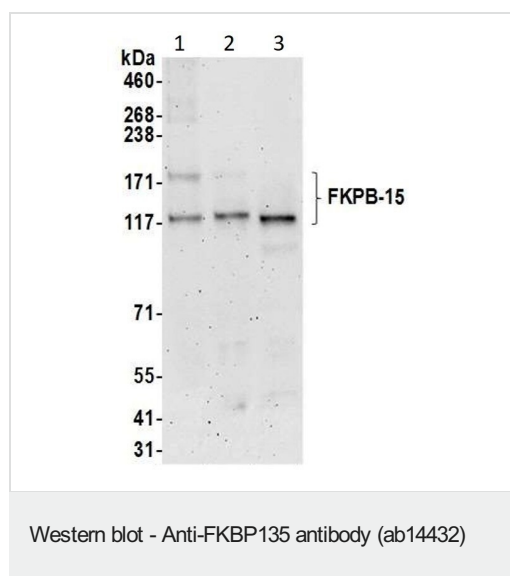
**The Abpromise guarantee**      **Abpromise保証は、** 次のテスト済みアプリケーションにおけるab14432の使用に適用されます  
アプリケーションノートには、推奨の開始希釈率がありますが、適切な希釈率につきましてはご検討ください。

アプリケーション	Abreviews	特記事項
WB		1/2000 - 1/10000. Predicted molecular weight: 135 kDa.
IP		Use at 2-10 µg/mg of lysate.

## ターゲット情報

機能	May be involved in the cytoskeletal organization of neuronal growth cones. Seems to be inactive as a PPlase (By similarity). Involved in the transport of early endosomes at the level of transition between microfilament-based and microtubule-based movement.
配列類似性	Belongs to the FKBP-type PPlase family. Contains 1 PPlase FKBP-type domain.
ドメイン	The PPlase FKBP-type domain seems to be inactive both for FK506-binding and enzymatic activity. The central coiled-coil region is responsible for association with early endosomes.
細胞内局在	Cytoplasm. Cell projection, axon. Early endosome. Present in axons and neuronal growth cones.

## 画像



**All lanes :** Anti-FKBP15 antibody (ab14432) at 0.1 µg/ml

**Lane 1 :** HeLa (Human cervix adenocarcinoma epithelial cell) whole cell lysate

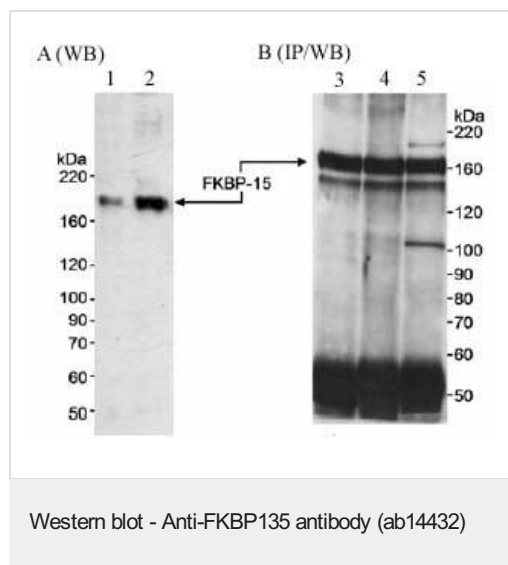
**Lane 2 :** HEK-293T (Human epithelial cell line from embryonic kidney transformed with large T antigen) whole cell lysate

**Lane 3 :** NIH/3T3 (Mouse embryonic fibroblast cell line) whole cell lysate

Lysates/proteins at 50 µg per lane.

**Predicted band size:** 135 kDa

**Exposure time:** 3 minutes



**All lanes :** Anti-FKBP15 antibody (ab14432) at 0.2 µg/ml

**Lane 1 :** Nuclear lysates prepared from HeLa cells at 5 µg

**Lane 2 :** Nuclear lysates prepared from HeLa cells at 20 µg

**Lanes 3-5 :** Nuclear lysates prepared from HeLa cells at 1 mg/ml

**Predicted band size:** 135 kDa

Antibodies: ab14432 used at 0.2 mcg/ml for WB in A and B and 2 mcg/mg extract for IP (B), **ab14433** and **ab14434** used at 2 mcg/mg extract for IP. Detection: Chemiluminescence with an exposure time of 25 minutes (A) and 10 minutes (B).

In figure B the Immunoprecipitation was done using ab14432 (Lane 3), **ab14433** (Lane 4) and **ab14434** (Lane 5) at 2µg/mg of extract.

**Please note:** All products are "FOR RESEARCH USE ONLY. NOT FOR USE IN DIAGNOSTIC PROCEDURES"

### Our Abpromise to you: Quality guaranteed and expert technical support

- Replacement or refund for products not performing as stated on the datasheet
- Valid for 12 months from date of delivery
- Response to your inquiry within 24 hours
- We provide support in Chinese, English, French, German, Japanese and Spanish
- Extensive multi-media technical resources to help you
- We investigate all quality concerns to ensure our products perform to the highest standards

If the product does not perform as described on this datasheet, we will offer a refund or replacement. For full details of the Abpromise, please visit <https://www.abcam.co.jp/abpromise> or contact our technical team.

### Terms and conditions

- Guarantee only valid for products bought direct from Abcam or one of our authorized distributors