

FITC Anti-Vimentin antibody [RV202] ab128507

★★★★★ [5 Abreviews](#) [10 References](#) [画像数 2](#)

製品の概要

製品名	FITC Anti-Vimentin antibody [RV202]
製品の詳細	FITC Mouse monoclonal [RV202] to Vimentin
由来種	Mouse
標識	FITC. Ex: 493nm, Em: 528nm
アプリケーション	適用あり: IHC-Fr, Flow Cyt (Intra)
種交差性	交差種: Human, Pig 非交差種: Zebrafish
免疫原	Full length native protein (purified) corresponding to Cow Vimentin. Cytoskeletal vimentin extract of calf lens. Database link: P48616
ポジティブ・コントロール	IHC-Fr: Swine colon tissue. Flow Cyt (intra): HeLa cells.
特記事項	<p>The Life Science industry has been in the grips of a reproducibility crisis for a number of years. Abcam is leading the way in addressing this with our range of recombinant monoclonal antibodies and knockout edited cell lines for gold-standard validation. Please check that this product meets your needs before purchasing.</p> <p>If you have any questions, special requirements or concerns, please send us an inquiry and/or contact our Support team ahead of purchase. Recommended alternatives for this product can be found below, along with publications, customer reviews and Q&As</p>

製品の特性

製品の状態	Liquid
保存方法	Shipped at 4°C. Store at +4°C short term (1-2 weeks). Upon delivery aliquot. Store at -20°C. Store In the Dark.
バッファー	Preservative: 0.09% Sodium azide Constituents: 99% PBS, 0.1% BSA
精製度	Protein G purified
ポリ/モノ	モノクローナル
クローン名	RV202
ミエローマ	Sp2/0-Ag14

アプリケーション

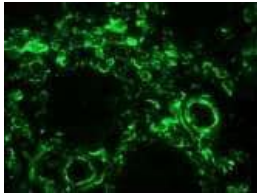
The Abpromise guarantee **Abpromise保証は、次のテスト済みアプリケーションにおけるab128507の使用に適用されます**
 アプリケーションノートには、推奨の開始希釈率がありますが、適切な希釈率につきましてはご検討ください。

アプリケーション	Abreviews	特記事項
IHC-Fr		1/10 - 1/200.
Flow Cyt (Intra)		1/1000. ab91356 - Mouse monoclonal IgG1, is suitable for use as an isotype control with this antibody.

ターゲット情報

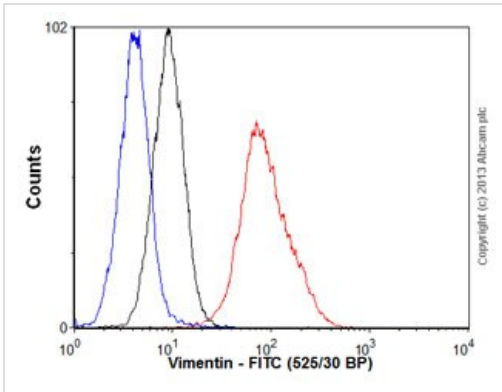
機能	Vimentins are class-III intermediate filaments found in various non-epithelial cells, especially mesenchymal cells. Vimentin is attached to the nucleus, endoplasmic reticulum, and mitochondria, either laterally or terminally. Involved with LARP6 in the stabilization of type I collagen mRNAs for CO1A1 and CO1A2.
組織特異性	Highly expressed in fibroblasts, some expression in T- and B-lymphocytes, and little or no expression in Burkitt's lymphoma cell lines. Expressed in many hormone-independent mammary carcinoma cell lines.
関連疾患	Cataract 30
配列類似性	Belongs to the intermediate filament family.
ドメイン	The central alpha-helical coiled-coil rod region mediates elementary homodimerization. The [IL]-x-C-x-x-[DE] motif is a proposed target motif for cysteine S-nitrosylation mediated by the iNOS-S100A8/A9 transnitrosylase complex.
翻訳後修飾	Filament disassembly during mitosis is promoted by phosphorylation at Ser-55 as well as by nestin (By similarity). One of the most prominent phosphoproteins in various cells of mesenchymal origin. Phosphorylation is enhanced during cell division, at which time vimentin filaments are significantly reorganized. Phosphorylation by PKN1 inhibits the formation of filaments. Phosphorylated at Ser-56 by CDK5 during neutrophil secretion in the cytoplasm. Phosphorylated by STK33. O-glycosylated during cytokinesis at sites identical or close to phosphorylation sites, this interferes with the phosphorylation status. S-nitrosylation is induced by interferon-gamma and oxidatively-modified low-density lipoprotein (LDL(ox)) possibly implicating the iNOS-S100A8/9 transnitrosylase complex.
細胞内局在	Cytoplasm.
製品の状態	Vimentin is found in connective tissue and in the cytoskeleton.

画像



Immunohistochemistry (Frozen sections) - FITC
Anti-Vimentin antibody [RV202] (ab128507)

ab128507, at 1/200 dilution, staining Vimentin in a frozen section of Swine colon tissue by Immunohistochemistry.



Flow Cytometry (Intracellular) - FITC Anti-Vimentin
antibody [RV202] (ab128507)

Overlay histogram showing HeLa cells stained with **ab128507** (red line). The cells were fixed with 80% methanol (5 min) and then permeabilized with 0.1% PBS-Triton for 20 min. The cells were then incubated in 1x PBS / 10% normal goat serum / 0.3M glycine to block non-specific protein-protein interactions followed by the antibody (ab128507, 1/1000 dilution) for 30 min at 22°C. Isotype control antibody (black line) was mouse IgG1 [MOPC-21] (FITC) (**ab18435**, 1µg/1x10⁶ cells) for 30 min at 22°C. Unlabelled sample (blue line) was also used as a control. Acquisition of >5,000 events were collected using a 20mW Argon ion laser (488nm) and 525/30 bandpass filter.

Please note: All products are "FOR RESEARCH USE ONLY. NOT FOR USE IN DIAGNOSTIC PROCEDURES"

Our Abpromise to you: Quality guaranteed and expert technical support

- Replacement or refund for products not performing as stated on the datasheet
- Valid for 12 months from date of delivery
- Response to your inquiry within 24 hours
- We provide support in Chinese, English, French, German, Japanese and Spanish
- Extensive multi-media technical resources to help you
- We investigate all quality concerns to ensure our products perform to the highest standards

If the product does not perform as described on this datasheet, we will offer a refund or replacement. For full details of the Abpromise, please visit <https://www.abcam.co.jp/abpromise> or contact our technical team.

Terms and conditions

- Guarantee only valid for products bought direct from Abcam or one of our authorized distributors