

FITC Anti-SLAM / CD150 antibody [9D1] ab93527

1 References [画像数 1](#)

製品の概要

製品名	FITC Anti-SLAM / CD150 antibody [9D1]
製品の詳細	FITC Rat monoclonal [9D1] to SLAM / CD150
由来種	Rat
標識	FITC. Ex: 493nm, Em: 528nm
アプリケーション	適用あり: Flow Cyt
種交差性	交差種: Mouse
免疫原	Tissue, cells or virus corresponding to Mouse SLAM/ CD150. CHO cells stably transfected with Mouse SLAM/ CD150.
ポジティブ・コントロール	Mouse thymic and splenic cell suspensions
特記事項	<p>Mouse hematopoietic stem cells (HSC) can be identified using SLAM/CD150 family markers, such as CD150+CD244-CD48.</p> <p>The Life Science industry has been in the grips of a reproducibility crisis for a number of years. Abcam is leading the way in addressing this with our range of recombinant monoclonal antibodies and knockout edited cell lines for gold-standard validation. Please check that this product meets your needs before purchasing.</p> <p>If you have any questions, special requirements or concerns, please send us an inquiry and/or contact our Support team ahead of purchase. Recommended alternatives for this product can be found below, along with publications, customer reviews and Q&As</p>

製品の特性

製品の状態	Liquid
保存方法	Shipped at 4°C. Store at +4°C.
バッファー	pH: 7.20 Preservative: 0.09% Sodium azide Constituents: 0.87% Sodium chloride, PBS
精製度	Protein G purified
一次抗体 備考	Mouse hematopoietic stem cells (HSC) can be identified using SLAM/CD150 family markers, such as CD150+CD244-CD48.

ポリ/モノ	モノクローナル
クローン名	9D1
アイソタイプ	IgG1

アプリケーション

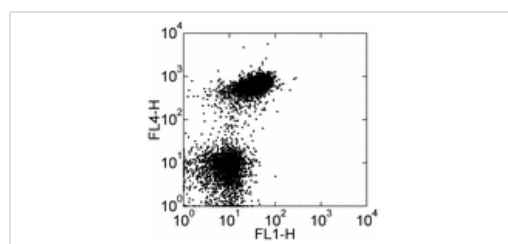
The Abpromise guarantee **Abpromise保証は、次のテスト済みアプリケーションにおけるab93527の使用に適用されます**
 アプリケーションノートには、推奨の開始希釈率がありますが、適切な希釈率につきましてはご検討ください。

アプリケーション	Abreviews	特記事項
Flow Cyt		Use at an assay dependent concentration. Use at a concentration of 0.5 - 1 µg/test in a 100µl volume. ab18404 - Rat monoclonal IgG1, is suitable for use as an isotype control with this antibody.

ターゲット情報

機能	High-affinity self-ligand important in bidirectional T-cell to B-cell stimulation. SLAM-induced signal-transduction events in T-lymphocytes are different from those in B-cells. Two modes of SLAM signaling are likely to exist: one in which the inhibitor SH2D1A acts as a negative regulator and another in which protein-tyrosine phosphatase 2C (PTPN11)-dependent signal transduction operates.
組織特異性	Constitutively expressed on peripheral blood memory T-cells, T-cell clones, immature thymocytes and a proportion of B-cells, and is rapidly induced on naive T-cells after activation.
配列類似性	Contains 1 Ig-like C2-type (immunoglobulin-like) domain. Contains 1 Ig-like V-type (immunoglobulin-like) domain.
ドメイン	The most membrane-proximal SH2-binding motif interacts with SH2 domain of SH2D1A and does not need to be phosphorylated on tyrosine residues.
翻訳後修飾	Phosphorylated by FYN.
細胞内局在	Cell membrane. Present on the surface of B-cells and T-cells.

画像



ab93527, at 0.5 µg, staining SLAM/CD150 in C57Bl/6 splenocytes by Flow Cytometry. Cells in the lymphocyte gate were used for analysis, and appropriate isotype controls were tested.

Flow Cytometry - FITC Anti-SLAM / CD150 antibody
[9D1] (ab93527)

Please note: All products are "FOR RESEARCH USE ONLY. NOT FOR USE IN DIAGNOSTIC PROCEDURES"

Our Abpromise to you: Quality guaranteed and expert technical support

- Replacement or refund for products not performing as stated on the datasheet
- Valid for 12 months from date of delivery
- Response to your inquiry within 24 hours

- We provide support in Chinese, English, French, German, Japanese and Spanish
- Extensive multi-media technical resources to help you
- We investigate all quality concerns to ensure our products perform to the highest standards

If the product does not perform as described on this datasheet, we will offer a refund or replacement. For full details of the Abpromise, please visit <https://www.abcam.co.jp/abpromise> or contact our technical team.

Terms and conditions

- Guarantee only valid for products bought direct from Abcam or one of our authorized distributors