

### FITC Anti-RFP antibody ab34764

★★★★★ [1 Abreviews](#) [6 References](#) [画像数 1](#)

#### 製品の概要

製品名	FITC Anti-RFP antibody
製品の詳細	FITC Rabbit polyclonal to RFP
由来種	Rabbit
標識	FITC. Ex: 493nm, Em: 528nm
特異性	ab34764 detects RFP tagged proteins. No reaction was observed against serum proteins.Expect reactivity against RFP and its variants: mCherry, tdTomato, mBanana, mOrange, mPlum, mOrange and mStrawberry".
アプリケーション	<b>適用あり:</b> ELISA, ICC/IF, Flow Cyt, WB
種交差性	<b>交差種:</b> Species independent
免疫原	Fusion protein corresponding to RFP. derived from the mushroom polyp coral Discosoma
特記事項	<p>3.4 moles FITC per mole of rabbit IgG.</p> <p>The Life Science industry has been in the grips of a reproducibility crisis for a number of years. Abcam is leading the way in addressing this with our range of recombinant monoclonal antibodies and knockout edited cell lines for gold-standard validation. Please check that this product meets your needs before purchasing.</p> <p>If you have any questions, special requirements or concerns, please send us an inquiry and/or contact our Support team ahead of purchase. Recommended alternatives for this product can be found below, along with publications, customer reviews and Q&amp;As</p>

#### 製品の特性

製品の状態	Liquid
保存方法	Shipped at 4°C. Store at +4°C.
バッファー	<p>pH: 6.50</p> <p>Preservative: 0.01% Sodium azide</p> <p>Constituents: 1% BSA, 0.42% Tripotassium orthophosphate, 0.87% Sodium chloride</p>
精製度	Immunogen affinity purified
特記事項(精製)	affinity purification was followed by solid phase adsorption to remove any unwanted reactivities.
ポリ/モノ	ポリクローナル
アイソタイプ	IgG

## アプリケーション

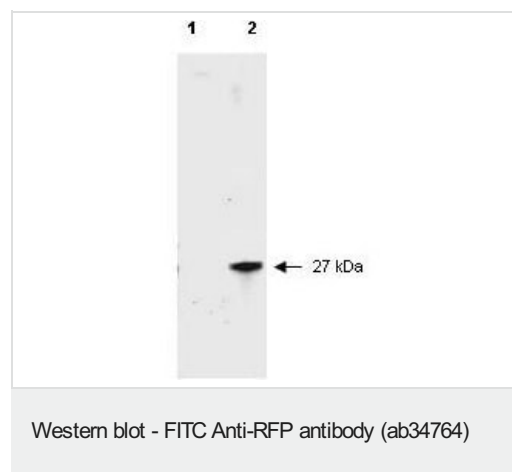
**The Abpromise guarantee**      Abpromise保証は、次のテスト済みアプリケーションにおけるab34764の使用に適用されます  
アプリケーションノートには、推奨の開始希釈率がありますが、適切な希釈率につきましてはご検討ください。

アプリケーション	Abreviews	特記事項
ELISA		Use at an assay dependent concentration.
ICC/IF	★★★★★ (1)	Use at an assay dependent concentration.
Flow Cyt		Use at an assay dependent concentration. <b>ab37406</b> - Rabbit polyclonal IgG, is suitable for use as an isotype control with this antibody.
WB		1/10000. Detects a band of approximately 27 kDa.

## ターゲット情報

**関連性**      Fluorescent proteins have become a useful and ubiquitous tool for making chimeric proteins, where they function as a fluorescent protein tag. Typically they tolerate N- and C-terminal fusion to a broad variety of proteins. They have been expressed in most known cell types and are used as a noninvasive fluorescent marker in living cells and organisms. They enable a wide range of applications where they have functioned as a cell lineage tracer, reporter of gene expression, or as a measure of protein-protein interactions.

## 画像



**All lanes :** FITC Anti-RFP antibody (ab34764) at 1/2500 dilution

**Lane 1 :** HeLa cell extract

**Lane 2 :** HeLa lysate

Lysates/proteins at 10 µg per lane.

### Secondary

**All lanes :** Goat-a-Rabbit IgG [H&L] at 1/5000 dilution

**Please note:** All products are "FOR RESEARCH USE ONLY. NOT FOR USE IN DIAGNOSTIC PROCEDURES"

**Our Abpromise to you: Quality guaranteed and expert technical support**

- Replacement or refund for products not performing as stated on the datasheet
- Valid for 12 months from date of delivery
- Response to your inquiry within 24 hours
- We provide support in Chinese, English, French, German, Japanese and Spanish
- Extensive multi-media technical resources to help you
- We investigate all quality concerns to ensure our products perform to the highest standards

If the product does not perform as described on this datasheet, we will offer a refund or replacement. For full details of the Abpromise, please visit <https://www.abcam.co.jp/abpromise> or contact our technical team.

#### **Terms and conditions**

---

- Guarantee only valid for products bought direct from Abcam or one of our authorized distributors