


# FITC Anti-M6PR (cation independent) antibody [MEM-238] ab58841

★★★★★ 1 Abreviews 2 References 画像数 2

### 製品の概要

製品名	FITC Anti-M6PR (cation independent) antibody [MEM-238]
製品の詳細	FITC Mouse monoclonal [MEM-238] to M6PR (cation independent)
由来種	Mouse
標識	FITC. Ex: 493nm, Em: 528nm
アプリケーション	適用あり: Flow Cyt, Flow Cyt (Intra)
種交差性	交差種: Human 交差が予測される動物種: Non human primates 
免疫原	Tissue, cells or virus corresponding to Human M6PR (cation independent). Database link: <a href="#">P11717</a>
エピトープ	ab58841 recognizes an epitope between domains 2 and 5 of Mannose 6 Phosphate Receptor (Cation independent) (CD222).
ポジティブ・コントロール	Flow Cyt: Human Peripheral whole blood, HeLa cells. Flow Cyt (Intra): HeLa Cells.
特記事項	<p>The purified antibody is conjugated with Fluorescein isothiocyanate (FITC) under optimum conditions. The reagent is free of unconjugated FITC and adjusted for direct use.</p> <p>The Life Science industry has been in the grips of a reproducibility crisis for a number of years. Abcam is leading the way in addressing this with our range of recombinant monoclonal antibodies and knockout edited cell lines for gold-standard validation. Please check that this product meets your needs before purchasing.</p> <p>If you have any questions, special requirements or concerns, please send us an inquiry and/or contact our Support team ahead of purchase. Recommended alternatives for this product can be found below, along with publications, customer reviews and Q&amp;As</p>

### 製品の特性

製品の状態	Liquid
保存方法	Shipped at 4°C. Store at +4°C.
バッファー	pH: 7.4 Preservative: 0.097% Sodium azide Constituents: PBS, 0.2% BSA

精製度	Size exclusion
特記事項 (精製)	The purified antibody is conjugated with fluorescein isothiocyanate (FITC) under optimum conditions. The conjugate is purified by size-exclusion chromatography.
ポリ/モノ	モノクローナル
クローン名	MEM-238
アイソタイプ	IgG1

## アプリケーション

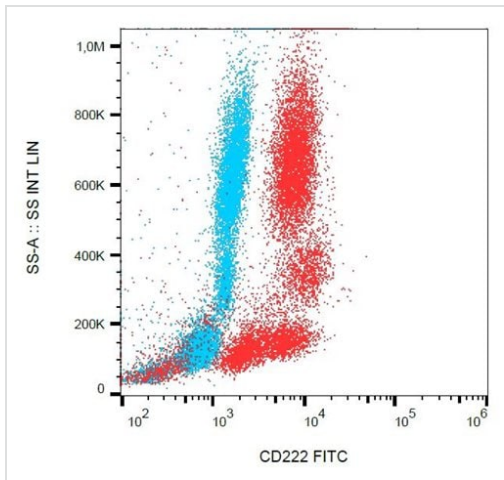
**The Abpromise guarantee**      **Abpromise保証は、** 次のテスト済みアプリケーションにおけるab58841の使用に適用されます  
アプリケーションノートには、推奨の開始希釈率がありますが、適切な希釈率につきましてはご検討ください。

アプリケーション	Abreviews	特記事項
Flow Cyt		Use 8.3µl for 10 <sup>6</sup> cells. <b>ab91356</b> - Mouse monoclonal IgG1, is suitable for use as an isotype control with this antibody.
Flow Cyt (Intra)		Use 1µg for 10 <sup>6</sup> cells. <b>ab91356</b> - Mouse monoclonal IgG1, is suitable for use as an isotype control with this antibody.

## ターゲット情報

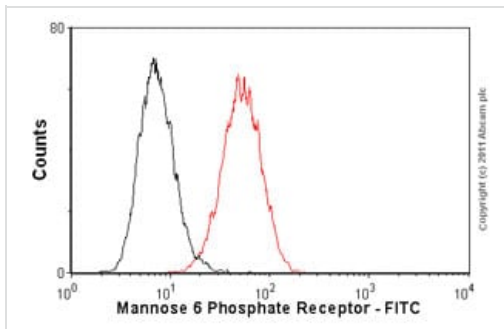
機能	Transport of phosphorylated lysosomal enzymes from the Golgi complex and the cell surface to lysosomes. Lysosomal enzymes bearing phosphomannosyl residues bind specifically to mannose-6-phosphate receptors in the Golgi apparatus and the resulting receptor-ligand complex is transported to an acidic prelysosomal compartment where the low pH mediates the dissociation of the complex. This receptor also binds IGF2. Acts as a positive regulator of T-cell coactivation, by binding DPP4.
配列類似性	Belongs to the MRL1/IGF2R family. Contains 1 fibronectin type-II domain.
ドメイン	Contains 15 repeating units of approximately 147 AA harboring four disulfide bonds each. The most highly conserved region within the repeat consists of a stretch of 13 AA that contains cysteines at both ends.
細胞内局在	Lysosome membrane. Colocalized with DPP4 in internalized cytoplasmic vesicles adjacent to the cell surface.

## 画像



Flow Cytometry - FITC Anti-M6PR (cation independent) antibody [MEM-238] (ab58841)

Flow cytometry surface staining pattern of human peripheral whole blood stained using anti-human CD222 (MEM-238) FITC antibody (ab58841) (red, concentration in sample 3 µg/ml) and mouse IgG1 isotype control (MOPC-21) FITC antibody (blue, concentration in sample 3 µg/ml).



Flow Cytometry (Intracellular) - FITC Anti-M6PR (cation independent) antibody [MEM-238] (ab58841)

Overlay histogram showing HeLa cells stained with ab58841 (red line). The cells were fixed with 80% methanol (5 min) and then permeabilized with 0.1% PBS-Tween for 20 min. The cells were then incubated in 1x PBS / 10% normal goat serum / 0.3M glycine to block non-specific protein-protein interactions followed by the antibody (ab58841, 1 µg/1x10<sup>6</sup> cells) for 30 min at 22°C. Isotype control antibody (black line) was mouse IgG1 (1 µg/1x10<sup>6</sup> cells). Acquisition of >5,000 events was performed. This antibody gave a positive signal in HeLa cells fixed with 4% paraformaldehyde/permeabilized in 0.1% PBS-Tween used under the same conditions.

**Please note:** All products are "FOR RESEARCH USE ONLY. NOT FOR USE IN DIAGNOSTIC PROCEDURES"

### Our Abpromise to you: Quality guaranteed and expert technical support

- Replacement or refund for products not performing as stated on the datasheet
- Valid for 12 months from date of delivery
- Response to your inquiry within 24 hours
- We provide support in Chinese, English, French, German, Japanese and Spanish
- Extensive multi-media technical resources to help you
- We investigate all quality concerns to ensure our products perform to the highest standards

If the product does not perform as described on this datasheet, we will offer a refund or replacement. For full details of the Abpromise, please visit <https://www.abcam.co.jp/abpromise> or contact our technical team.

#### **Terms and conditions**

---

- Guarantee only valid for products bought direct from Abcam or one of our authorized distributors