

FITC Anti-Integrin alpha 4/CD49D antibody [44H6] ab221

2 References [画像数 1](#)

製品の概要

製品名	FITC Anti-Integrin alpha 4/CD49D antibody [44H6]
製品の詳細	FITC Mouse monoclonal [44H6] to Integrin alpha 4/CD49D
由来種	Mouse
標識	FITC. Ex: 493nm, Em: 528nm
特異性	44H6 recognises the alpha chain of VLA 4. It reacts with ALL and AML cells, T-cells, B-cells and monocytes. No reactivity is observed in human kidney or brain sections. 44H6 will induce homotypic aggregation.
アプリケーション	適用あり: Flow Cyt
種交差性	交差種: Human
免疫原	Tissue, cells or virus corresponding to Integrin alpha 4/CD49D. HOON pre-B leukaemia cell line
特記事項	<p>Purified IgG conjugated to Fluorescein Isothiocyanate Isomer 1 (FITC). FITC : Protein (molar ratio): 5.6 : 1.0.</p> <p>The Life Science industry has been in the grips of a reproducibility crisis for a number of years. Abcam is leading the way in addressing this with our range of recombinant monoclonal antibodies and knockout edited cell lines for gold-standard validation. Please check that this product meets your needs before purchasing.</p> <p>If you have any questions, special requirements or concerns, please send us an inquiry and/or contact our Support team ahead of purchase. Recommended alternatives for this product can be found below, along with publications, customer reviews and Q&As</p>

製品の特性

製品の状態	Liquid
保存方法	Shipped at 4°C. Store at +4°C.
バッファー	Preservative: 0.1% Sodium azide Constituent: PBS
精製度	Protein A purified
特記事項 (精製)	Purified IgG prepared by affinity chromatography on Protein G from tissue culture supernatant
ポリ/モノ	モノクローナル
クローン名	44H6

ミエローマ
アイソタイプ

Sp2/0-Ag14
IgG1

アプリケーション

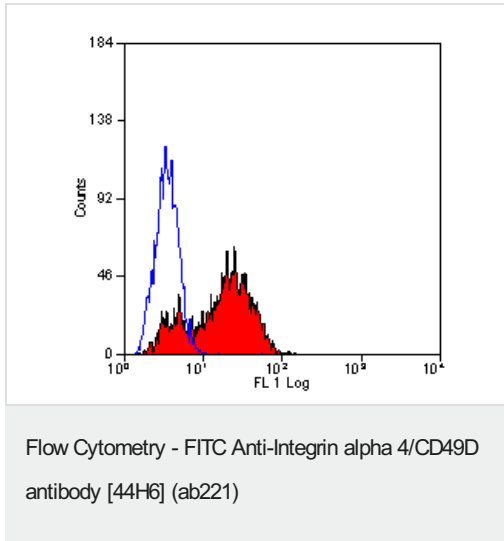
The Abpromise guarantee Abpromise保証は、 次のテスト済みアプリケーションにおけるab221の使用に適用されます
アプリケーションノートには、推奨の開始希釈率がありますが、適切な希釈率につきましてはご検討ください。

アプリケーション	Abreviews	特記事項
Flow Cyt		Use 10µl for 10 ⁶ cells. or 100µl whole blood. ab01356 Mouse monoclonal IgG1 is suitable for use as an

ターゲット情報

機能	Integrins alpha-4/beta-1 (VLA-4) and alpha-4/beta-7 are receptors for fibronectin. They recognize one or more domains within the alternatively spliced CS-1 and CS-5 regions of fibronectin. They are also receptors for VCAM1. Integrin alpha-4/beta-1 recognizes the sequence Q-I-D-S in VCAM1. Integrin alpha-4/beta-7 is also a receptor for MADCAM1. It recognizes the sequence L-D-T in MADCAM1. On activated endothelial cells integrin VLA-4 triggers homotypic aggregation for most VLA-4-positive leukocyte cell lines. It may also participate in cytolytic T-cell interactions with target cells.
配列類似性	Belongs to the integrin alpha chain family. Contains 7 FG-GAP repeats.
ドメイン	The SG1 motif is involved in binding to chondroitin sulfate glycosaminoglycan and cell adhesion.
翻訳後修飾	Phosphorylation on Ser-1027 inhibits PXN binding.
細胞内局在	Membrane.

画像



ab221 staining Integrin alpha 4/CD49D (FITC) in human peripheral blood lymphocytes by Flow Cytometry analysis.

Please note: All products are "FOR RESEARCH USE ONLY. NOT FOR USE IN DIAGNOSTIC PROCEDURES"

Our Abpromise to you: Quality guaranteed and expert technical support

- Replacement or refund for products not performing as stated on the datasheet
- Valid for 12 months from date of delivery
- Response to your inquiry within 24 hours
- We provide support in Chinese, English, French, German, Japanese and Spanish
- Extensive multi-media technical resources to help you
- We investigate all quality concerns to ensure our products perform to the highest standards

If the product does not perform as described on this datasheet, we will offer a refund or replacement. For full details of the Abpromise, please visit <https://www.abcam.co.jp/abpromise> or contact our technical team.

Terms and conditions

- Guarantee only valid for products bought direct from Abcam or one of our authorized distributors