

FITC Anti-ILT-4 antibody [27D6] ab95819

画像数 1

製品の概要

| | |
|--------------|---|
| 製品名 | FITC Anti-ILT-4 antibody [27D6] |
| 製品の詳細 | FITC Rat monoclonal [27D6] to ILT-4 |
| 由来種 | Rat |
| 標識 | FITC. Ex: 493nm, Em: 528nm |
| アプリケーション | 適用あり: Flow Cyt |
| 種交差性 | 交差種: Human |
| 免疫原 | The details of the immunogen for this antibody are not available. |
| ポジティブ・コントロール | Normal Human peripheral blood cells |
| 特記事項 | <p>The Life Science industry has been in the grips of a reproducibility crisis for a number of years. Abcam is leading the way in addressing this with our range of recombinant monoclonal antibodies and knockout edited cell lines for gold-standard validation. Please check that this product meets your needs before purchasing.</p> <p>If you have any questions, special requirements or concerns, please send us an inquiry and/or contact our Support team ahead of purchase. Recommended alternatives for this product can be found below, along with publications, customer reviews and Q&As</p> |

製品の特性

| | |
|--------|--|
| 製品の状態 | Liquid |
| 保存方法 | Shipped at 4°C. Store at +4°C. |
| バッファー | <p>pH: 7.20</p> <p>Preservative: 0.09% Sodium azide</p> <p>Constituents: BSA, Gelatin, PBS</p> |
| 精製度 | Protein G purified |
| ポリ/モノ | モノクローナル |
| クローン名 | 27D6 |
| アイソタイプ | IgM |

アプリケーション

The Abpromise guarantee

Abpromise保証は、次のテスト済みアプリケーションにおけるab95819の使用に適用されます

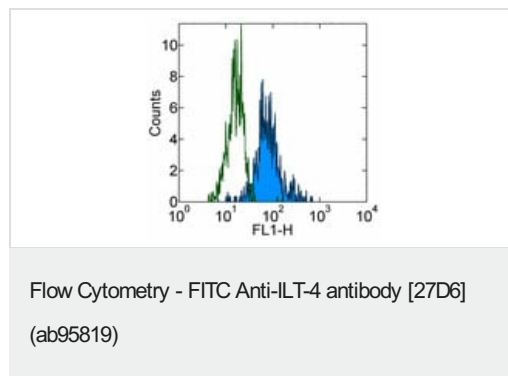
アプリケーションノートには、推奨の開始希釈率がありますが、適切な希釈率につきましてはご確認ください。

| アプリケーション | Abreviews | 特記事項 |
|----------|-----------|--|
| Flow Cyt | | Use 5µl for 10 ⁶ cells. ab35774 - Rat monoclonal IgM, is suitable for use as an isotype control with this antibody. |

ターゲット情報

| | |
|-------|---|
| 機能 | Receptor for class I MHC antigens. Recognizes a broad spectrum of HLA-A, HLA-B, HLA-C and HLA-G alleles. Involved in the down-regulation of the immune response and the development of tolerance. Competes with CD8A for binding to class I MHC antigens. Inhibits FCGR1A-mediated phosphorylation of cellular proteins and mobilization of intracellular calcium ions. |
| 組織特異性 | Expressed on monocytes and B-cells, and at lower levels on dendritic cells. Detected at low levels in natural killer (NK) cells. |
| 配列類似性 | Contains 4 Ig-like C2-type (immunoglobulin-like) domains. |
| ドメイン | Contains 3 copies of a cytoplasmic motif that is referred to as the immunoreceptor tyrosine-based inhibitor motif (ITIM). This motif is involved in modulation of cellular responses. The phosphorylated ITIM motif can bind the SH2 domain of several SH2-containing phosphatases. |
| 翻訳後修飾 | Phosphorylated on tyrosine residues. Dephosphorylated by PTPN6. |
| 細胞内局在 | Membrane. |

画像



Staining of normal Human peripheral blood cells with Rat IgM ?
Isotype Control FITC (open histogram) or ab95819 (filled histogram). Cells in the monocyte gate were used for analysis.

Please note: All products are "FOR RESEARCH USE ONLY. NOT FOR USE IN DIAGNOSTIC PROCEDURES"

Our Abpromise to you: Quality guaranteed and expert technical support

- Replacement or refund for products not performing as stated on the datasheet
- Valid for 12 months from date of delivery
- Response to your inquiry within 24 hours

- We provide support in Chinese, English, French, German, Japanese and Spanish
- Extensive multi-media technical resources to help you
- We investigate all quality concerns to ensure our products perform to the highest standards

If the product does not perform as described on this datasheet, we will offer a refund or replacement. For full details of the Abpromise, please visit <https://www.abcam.co.jp/abpromise> or contact our technical team.

Terms and conditions

- Guarantee only valid for products bought direct from Abcam or one of our authorized distributors