

FITC Anti-IL-6R antibody [B-R6] ab27321

3 References [画像数 1](#)

製品の概要

製品名	FITC Anti-IL-6R antibody [B-R6]
製品の詳細	FITC Mouse monoclonal [B-R6] to IL-6R
由来種	Mouse
標識	FITC. Ex: 493nm, Em: 528nm
特異性	Recognises the Interleukin-6 Ra subunit, IL-6 Ra, IL-6 R, a 80 kDa protein.
アプリケーション	適用あり: Flow Cyt
種交差性	交差種: Human
免疫原	Recombinant full length protein corresponding to Human IL-6R. gp80 transfected CHO cell line
ポジティブ・コントロール	Cells from U266 cell line.
特記事項	<p>This product was changed from ascites to tissue culture supernatant on 19th June 2019. Please note that the dilutions may need to be adjusted accordingly. If you have any questions, please do not hesitate to contact our scientific support team.</p> <p>The Life Science industry has been in the grips of a reproducibility crisis for a number of years. Abcam is leading the way in addressing this with our range of recombinant monoclonal antibodies and knockout edited cell lines for gold-standard validation. Please check that this product meets your needs before purchasing.</p> <p>If you have any questions, special requirements or concerns, please send us an inquiry and/or contact our Support team ahead of purchase. Recommended alternatives for this product can be found below, along with publications, customer reviews and Q&As</p>

製品の特性

製品の状態	Liquid
保存方法	Shipped at 4°C. Store at +4°C.
バッファー	<p>pH: 7.30</p> <p>Preservative: 0.09% Sodium azide</p> <p>Constituents: 94.91% PBS, 5% BSA</p>
精製度	Tissue culture supernatant
ポリ/モノ	モノクローナル
クローン名	B-R6

ミエローマ	x63-Ag8.653
アイソタイプ	IgG1
軽鎖の種類	kappa

アプリケーション

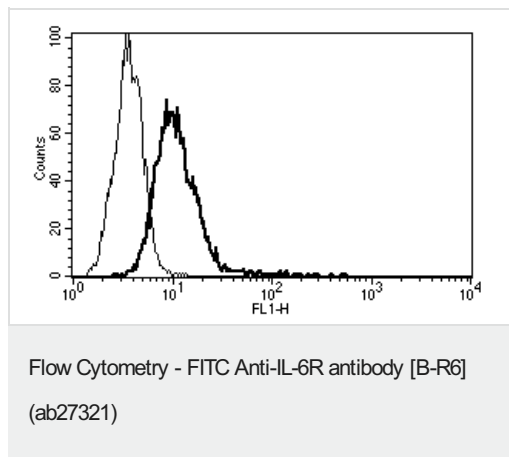
The Abpromise guarantee **Abpromise保証は、次のテスト済みアプリケーションにおけるab27321の使用に適用されます**
アプリケーションノートには、推奨の開始希釈率がありますが、適切な希釈率につきましてはご確認ください。

アプリケーション	Abreviews	特記事項
Flow Cyt		Use at an assay dependent concentration. ab91356 - Mouse monoclonal IgG1, is suitable for use as an isotype control with this antibody.

ターゲット情報

機能	Part of the receptor for interleukin 6. Binds to IL6 with low affinity, but does not transduce a signal. Signal activation necessitate an association with IL6ST. Activation may lead to the regulation of the immune response, acute-phase reactions and hematopoiesis. Low concentration of a soluble form of IL6 receptor acts as an agonist of IL6 activity.
組織特異性	Isoform 2 is expressed in peripheral blood mononuclear cells and weakly found in urine and serum.
配列類似性	Belongs to the type I cytokine receptor family. Type 3 subfamily. Contains 1 fibronectin type-III domain. Contains 1 Ig-like C2-type (immunoglobulin-like) domain.
ドメイン	The two fibronectin type-III-like domains, contained in the N-terminal part, form together a cytokine-binding domain. The WSXWS motif appears to be necessary for proper protein folding and thereby efficient intracellular transport and cell-surface receptor binding.
翻訳後修飾	A short soluble form may also be released from the membrane by proteolysis.
細胞内局在	Secreted and Basolateral cell membrane.

画像



ab27321 at 10 μ l/10⁶ cells staining IL6R in U266 cell line by Flow Cytometry.

This image was generated using the ascites version of the product.

Please note: All products are "FOR RESEARCH USE ONLY. NOT FOR USE IN DIAGNOSTIC PROCEDURES"

Our Abpromise to you: Quality guaranteed and expert technical support

- Replacement or refund for products not performing as stated on the datasheet
- Valid for 12 months from date of delivery
- Response to your inquiry within 24 hours
- We provide support in Chinese, English, French, German, Japanese and Spanish
- Extensive multi-media technical resources to help you
- We investigate all quality concerns to ensure our products perform to the highest standards

If the product does not perform as described on this datasheet, we will offer a refund or replacement. For full details of the Abpromise, please visit <https://www.abcam.co.jp/abpromise> or contact our technical team.

Terms and conditions

- Guarantee only valid for products bought direct from Abcam or one of our authorized distributors