

# FITC Anti-Cytokeratin 19 antibody [A53-B/A2] ab178543

**3 References** [画像数 1](#)

### 製品の概要

製品名	FITC Anti-Cytokeratin 19 antibody [A53-B/A2]
製品の詳細	FITC Mouse monoclonal [A53-B/A2] to Cytokeratin 19
由来種	Mouse
標識	FITC. Ex: 493nm, Em: 528nm
アプリケーション	<b>適用あり:</b> Flow Cyt (Intra)
種交差性	<b>交差種:</b> Human
免疫原	Tissue, cells or virus corresponding to Human Cytokeratin 19 aa 1 to the C-terminus. Immunogen is MCF7 Human breast adenocarcinoma cell line. Database link: <a href="#">P08727</a>

 [Run BLAST with](#)

 [Run BLAST with](#)

ポジティブ・コントロール Flow Cyt (Intra): MCF7 cells.

### 特記事項

The Life Science industry has been in the grips of a reproducibility crisis for a number of years. Abcam is leading the way in addressing this with our range of recombinant monoclonal antibodies and knockout edited cell lines for gold-standard validation. Please check that this product meets your needs before purchasing.

If you have any questions, special requirements or concerns, please send us an inquiry and/or contact our Support team ahead of purchase. Recommended alternatives for this product can be found below, along with publications, customer reviews and Q&As

### 製品の特性

製品の状態	Liquid
保存方法	Shipped at 4°C. Upon delivery aliquot. Store at +4°C. Do Not Freeze. Store In the Dark.
バッファー	pH: 7.40 Preservative: 0.1% Sodium azide Constituent: 99% PBS
精製度	Size exclusion
ポリ/モノ	モノクローナル
クローン名	A53-B/A2
アイソタイプ	IgG2a

## アプリケーション

**The Abpromise guarantee** **Abpromise保証は、** 次のテスト済みアプリケーションにおけるab178543の使用に適用されず  
アプリケーションノートには、推奨の開始希釈率がありますが、適切な希釈率につきましてはご検討ください。

アプリケーション	Abreviews	特記事項
Flow Cyt (Intra)		Use a concentration of 1 - 5 µg/ml. <b>ab91362</b> - Mouse monoclonal IgG2a, is suitable for use as an isotype control with this antibody.

## ターゲット情報

**機能** Involved in the organization of myofibers. Together with KRT8, helps to link the contractile apparatus to dystrophin at the costameres of striated muscle.

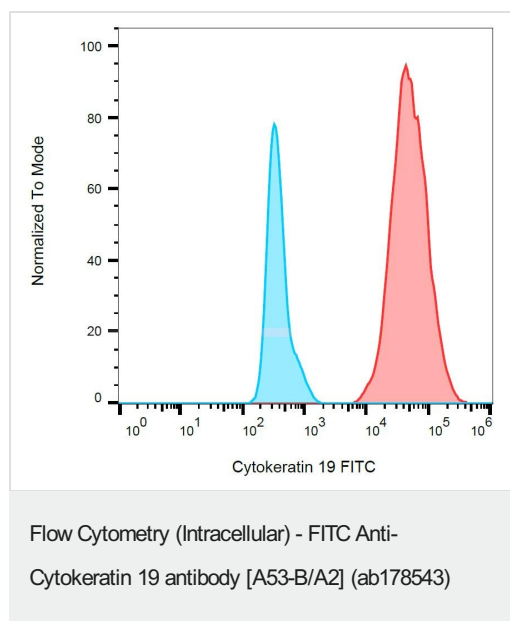
**組織特異性** Expressed in a defined zone of basal keratinocytes in the deep outer root sheath of hair follicles. Also observed in sweat gland and mammary gland ductal and secretory cells, bile ducts, gastrointestinal tract, bladder urothelium, oral epithelia, esophagus, ectocervical epithelium (at protein level). Expressed in epidermal basal cells, in nipple epidermis and a defined region of the hair follicle. Also seen in a subset of vascular wall cells in both the veins and artery of human umbilical cord, and in umbilical cord vascular smooth muscle. Observed in muscle fibers accumulating in the costameres of myoplasm at the sarcolemma in structures that contain dystrophin and spectrin.

**配列類似性** Belongs to the intermediate filament family.

**発生段階** Present in hair follicles at all stages of development.

**ドメイン** This keratin differs from all other IF proteins in lacking the C-terminal tail domain.

## 画像



Flow Cytometry (Intracellular) analysis of MCF-7 human breast adenocarcinoma cell line labeling Cytokeratin 19 with ab178543 at 9 µg/mL (red).

Negative control: Human peripheral whole blood (blue).

Excitation laser: 488 nm

## **Our Abpromise to you: Quality guaranteed and expert technical support**

---

- Replacement or refund for products not performing as stated on the datasheet
- Valid for 12 months from date of delivery
- Response to your inquiry within 24 hours
  
- We provide support in Chinese, English, French, German, Japanese and Spanish
- Extensive multi-media technical resources to help you
- We investigate all quality concerns to ensure our products perform to the highest standards

If the product does not perform as described on this datasheet, we will offer a refund or replacement. For full details of the Abpromise, please visit <https://www.abcam.co.jp/abpromise> or contact our technical team.

## **Terms and conditions**

---

- Guarantee only valid for products bought direct from Abcam or one of our authorized distributors