


FITC Anti-CD90 / Thy1 antibody [MRC OX-7] ab226

27 References **画像数 5**

製品の概要

製品名	FITC Anti-CD90 / Thy1 antibody [MRC OX-7]
製品の詳細	FITC Mouse monoclonal [MRC OX-7] to CD90 / Thy1
由来種	Mouse
標識	FITC. Ex: 493nm, Em: 528nm
特異性	Recognises the Thy-1.1 antigenic determinant which is a monomorphic determinant within rat strains but polymorphic in mice. Thus MRC OX-7 reacts with Thy-1.1 mice eg. AKR strain, but not Thy-1.2 mice eg. CBA, BALB/c.
アプリケーション	適用あり: Flow Cyt (Intra), ICC
種交差性	交差種: Rat 交差が予測される動物種: Mouse, Rabbit, Guinea pig 
免疫原	Full length protein. This information is proprietary to Abcam and/or its suppliers.
ポジティブ・コントロール	ICC: PC12 cells. Flow Cyt (Intra): PC12 cells.
特記事項	The affinity of the Fab' of MRC OX-7 for rat Thy-1 is $3 \times 10^9 \text{m}^{-1}$ and for mouse Thy-1.1 is $3 \times 10^8 \text{m}^{-1}$. Conjugated to Fluorescein Isothiocyanite Isomer 1 (FITC). FITC : Protein (molar ratio): 5.0 : 1.0. The Life Science industry has been in the grips of a reproducibility crisis for a number of years. Abcam is leading the way in addressing this with our range of recombinant monoclonal antibodies and knockout edited cell lines for gold-standard validation. Please check that this product meets your needs before purchasing. If you have any questions, special requirements or concerns, please send us an inquiry and/or contact our Support team ahead of purchase. Recommended alternatives for this product can be found below, along with publications, customer reviews and Q&As

製品の特性

製品の状態	Liquid
保存方法	Shipped at 4°C. Store at +4°C short term (1-2 weeks). Upon delivery aliquot. Store at -20°C long term. Avoid freeze / thaw cycle. Store In the Dark.
バッファー	Preservative: 0.02% Sodium azide Constituents: PBS, 30% Glycerol (glycerin, glycerine), 1% BSA

精製度	Protein A purified
特記事項 (精製)	Purified IgG prepared by affinity chromatography on Protein A from tissue culture supernatant
ポリ/モノ	モノクローナル
クローン名	MRC OX-7
ミエローマ	NS1
アイソタイプ	IgG1
軽鎖の種類	unknown

アプリケーション

The Abpromise guarantee **Abpromise保証は、** 次のテスト済みアプリケーションにおけるab226の使用に適用されます

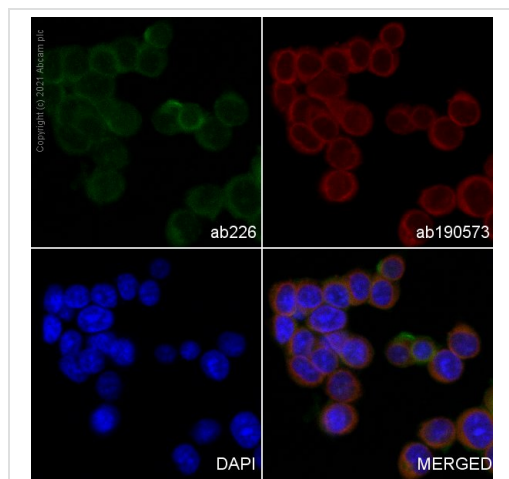
アプリケーションノートには、推奨の開始希釈率がありますが、適切な希釈率につきましてはご検討ください。

アプリケーション	Abreviews	特記事項
Flow Cyt (Intra)		1/500. ab91356 - Mouse monoclonal IgG1, is suitable for use as an isotype control with this antibody.
ICC		1/100. This product gave a positive signal in PC12 cells fixed with 100% methanol (5 min).

ターゲット情報

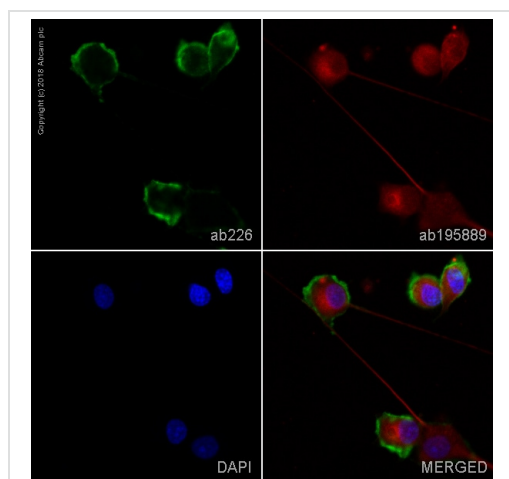
機能	May play a role in cell-cell or cell-ligand interactions during synaptogenesis and other events in the brain.
配列類似性	Contains 1 Ig-like V-type (immunoglobulin-like) domain.
細胞内局在	Cell membrane.

画像



Immunocytochemistry - FITC Anti-CD90 / Thy1 antibody [MRC OX-7] (ab226)

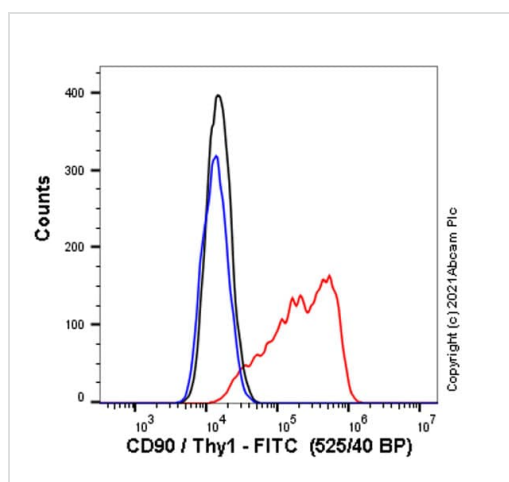
ab226 staining CD90 / Thy1 in undifferentiated PC12 cells. The cells were fixed with 100% methanol (5 min), permeabilized with 0.1% Triton X-100 for 5 minutes and then blocked with 1% BSA/10% normal goat serum/0.3M glycine in 0.1% PBS-Tween for 1h. The cells were then incubated overnight at +4°C with ab226 at 1/100 dilution (shown in green) and **ab190573**, Rabbit monoclonal to alpha Tubulin (Alexa Fluor® 647), at 1/250 dilution (shown in red). Nuclear DNA was labelled with DAPI (shown in blue). Image was taken with a confocal microscope (Leica-Microsystems, TCS SP8)



Immunocytochemistry - FITC Anti-CD90 / Thy1 antibody [MRC OX-7] (ab226)

ab226 staining CD90 / Thy1 in PC12 cells. The cells were fixed with 100% methanol (5 min), permeabilized with 0.1% Triton X-100 for 5 minutes and then blocked with 1% BSA/10% normal goat serum/0.3M glycine in 0.1% PBS-Tween for 1h. The cells were then incubated overnight at +4°C with ab226 at 1/100 dilution (shown in green) and **ab195889**, Mouse monoclonal to alpha Tubulin (Alexa Fluor® 594), at 1/250 dilution (shown in red). Nuclear DNA was labelled with DAPI (shown in blue).

Image was taken with a confocal microscope (Leica-Microsystems, TCS SP8).



Flow Cytometry (Intracellular) - FITC Anti-CD90 / Thy1 antibody [MRC OX-7] (ab226)

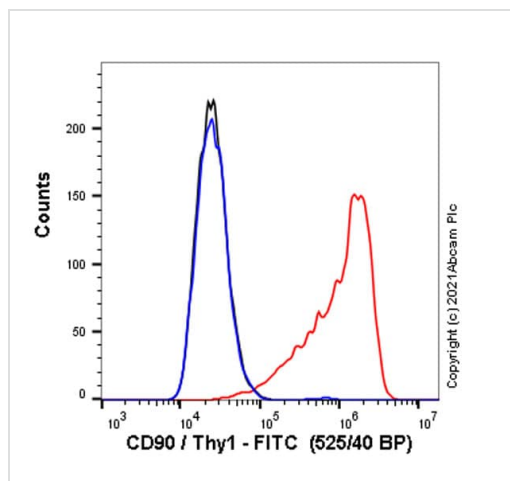
Flow cytometry overlay histogram showing PC12 (undifferentiated) cells stained with ab226 (red line). The cells were fixed with 80% methanol (5 min) and then permeabilized with 0.1% PBS-Triton X-100 for 15 min. The cells were incubated in 1x PBS containing 10% normal goat serum to block non-specific protein-protein interaction, followed by the antibody (ab226) (1x 10⁶ in 100µl at 1µg/ml (1/500)) for 30 min at 22°C.

Isotype control antibody (black line) was used at the same concentration and conditions as the primary antibody. Unlabelled sample (blue line) was also used as a control.

Acquisition of >5000 events were collected using a 50 mW Blue laser (488nm) and 525/40 bandpass filter.

This antibody gave a positive signal in PC12 (undifferentiated) cells fixed with 4% formaldehyde (10 min) / permeabilized with 0.1%

PBS-Triton X-100 for 15 min used under the same conditions.

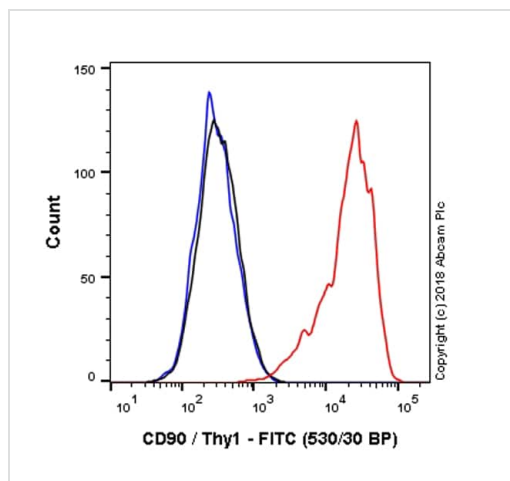


Flow Cytometry (Intracellular) - FITC Anti-CD90 /
Thy1 antibody [MRC OX-7] (ab226)

Flow cytometry overlay histogram showing PC12 (undifferentiated) cells stained with ab226 (red line). The cells were incubated in 1x PBS containing 10% normal goat serum to block non-specific protein-protein interaction, followed by the antibody (ab226) (1×10^6 in 100µl at 1µg/ml (1/500)) for 30 min on ice.

Isotype control antibody (black line) was used at the same concentration and conditions as the primary antibody. Unlabelled sample (blue line) was also used as a control.

Acquisition of >5000 events were collected using a 50 mW Blue laser (488nm) and 525/40 bandpass filter.



Flow Cytometry (Intracellular) - FITC Anti-CD90 /
Thy1 antibody [MRC OX-7] (ab226)

Overlay histogram showing PC12 cells stained with ab226 (red line). The cells were fixed with 80% methanol (5 min) and then permeabilized with 0.1% PBS-Triton X-100 for 15 min. The cells were then incubated in 1x PBS / 10% normal goat serum to block non-specific protein-protein interactions followed by the antibody (ab226, 1/500 dilution) for 30 min at 22°C.

Isotype control antibody (black line) was Mouse IgG1 (monoclonal) FITC (**ab18435**) used at the same concentration and conditions as the primary antibody. Unlabelled sample (blue line) was also used as a control.

Acquisition of >5,000 events were collected using a 50 mW Blue laser (488nm) and 530/30 bandpass filter.

Please note: All products are "FOR RESEARCH USE ONLY. NOT FOR USE IN DIAGNOSTIC PROCEDURES"

Our Abpromise to you: Quality guaranteed and expert technical support

- Replacement or refund for products not performing as stated on the datasheet
- Valid for 12 months from date of delivery
- Response to your inquiry within 24 hours
- We provide support in Chinese, English, French, German, Japanese and Spanish
- Extensive multi-media technical resources to help you
- We investigate all quality concerns to ensure our products perform to the highest standards

If the product does not perform as described on this datasheet, we will offer a refund or replacement. For full details of the Abpromise,

please visit <https://www.abcam.co.jp/abpromise> or contact our technical team.

Terms and conditions

- Guarantee only valid for products bought direct from Abcam or one of our authorized distributors