

FITC Anti-CD4 antibody [OX-35] ab239230

画像数 2

製品の概要

製品名	FITC Anti-CD4 antibody [OX-35]
製品の詳細	FITC Mouse monoclonal [OX-35] to CD4
由来種	Mouse
標識	FITC. Ex: 493nm, Em: 528nm
アプリケーション	適用あり: Flow Cyt
種交差性	交差種: Rat
免疫原	Tissue, cells or virus corresponding to CD4. MLR generated rat Th cells.
エピトープ	Extracellular.
ポジティブ・コントロール	Flow Cyt: Rat thymocytes.
特記事項	<p>The Life Science industry has been in the grips of a reproducibility crisis for a number of years. Abcam is leading the way in addressing this with our range of recombinant monoclonal antibodies and knockout edited cell lines for gold-standard validation. Please check that this product meets your needs before purchasing.</p> <p>If you have any questions, special requirements or concerns, please send us an inquiry and/or contact our Support team ahead of purchase. Recommended alternatives for this product can be found below, along with publications, customer reviews and Q&As</p>

製品の特性

製品の状態	Liquid
保存方法	Shipped at 4°C. Store at +4°C. Store In the Dark.
バッファー	<p>pH: 7.40</p> <p>Preservative: 0.0975% Sodium azide</p> <p>Constituent: PBS</p>
精製度	Size exclusion
特記事項 (精製)	The purified antibody is conjugated with Fluorescein isothiocyanate (FITC) under optimum conditions. The reagent is free of unconjugated FITC.
ポリ/モノ	モノクローナル
クローン名	OX-35
アイソタイプ	IgG2a

アプリケーション

The Abpromise guarantee

Abpromise保証は、次のテスト済みアプリケーションにおけるab239230の使用に適用されます

アプリケーションノートには、推奨の開始希釈率がありますが、適切な希釈率につきましてはご検討ください。

アプリケーション	Abreviews	特記事項
Flow Cyt		Use a concentration of 2 µg/ml.

ターゲット情報

機能

Accessory protein for MHC class-II antigen/T-cell receptor interaction. May regulate T-cell activation. Induces the aggregation of lipid rafts.

配列類似性

Contains 3 Ig-like C2-type (immunoglobulin-like) domains.

Contains 1 Ig-like V-type (immunoglobulin-like) domain.

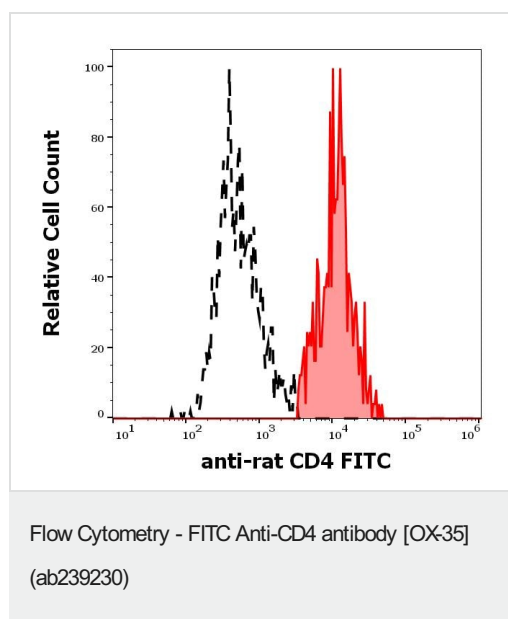
翻訳後修飾

Palmitoylation and association with LCK contribute to the enrichment of CD4 in lipid rafts.

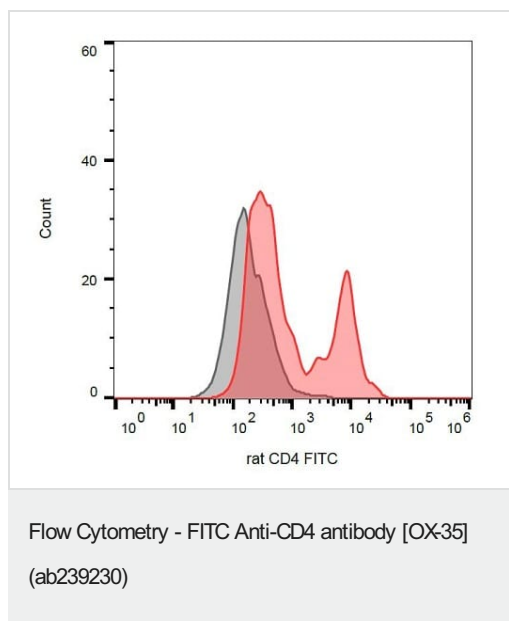
細胞内局在

Cell membrane. Localizes to lipid rafts. Removed from plasma membrane by HIV-1 Nef protein that increases clathrin-dependent endocytosis of this antigen to target it to lysosomal degradation. Cell surface expression is also down-modulated by HIV-1 Envelope polypeptide gp160 that interacts with, and sequesters CD4 in the endoplasmic reticulum.

画像



Flow cytometry analysis of rat thymocytes stained using ab239230 (concentration in sample 1 µg/ml) showing separation of rat CD4 positive cells (red-filled) from rat CD4 negative cells (black-dashed).



Flow cytometric analysis of rat thymocytes labeling CD4 with ab239230. Surface staining. Gated on thymocytes.

Please note: All products are "FOR RESEARCH USE ONLY. NOT FOR USE IN DIAGNOSTIC PROCEDURES"

Our Abpromise to you: Quality guaranteed and expert technical support

- Replacement or refund for products not performing as stated on the datasheet
- Valid for 12 months from date of delivery
- Response to your inquiry within 24 hours
- We provide support in Chinese, English, French, German, Japanese and Spanish
- Extensive multi-media technical resources to help you
- We investigate all quality concerns to ensure our products perform to the highest standards

If the product does not perform as described on this datasheet, we will offer a refund or replacement. For full details of the Abpromise, please visit <https://www.abcam.co.jp/abpromise> or contact our technical team.

Terms and conditions

- Guarantee only valid for products bought direct from Abcam or one of our authorized distributors