

FITC Anti-CD4 antibody [B-A1] ab59474

★★★★☆ [4 Abreviews](#) [7 References](#) [画像数 2](#)

製品の概要

製品名	FITC Anti-CD4 antibody [B-A1]
製品の詳細	FITC Mouse monoclonal [B-A1] to CD4
由来種	Mouse
標識	FITC. Ex: 493nm, Em: 528nm
特異性	Ab59474 recognises a 55 kDa protein.
アプリケーション	適用あり: Flow Cyt
種交差性	交差種: Human
免疫原	Tissue, cells or virus corresponding to Human CD4. PHA activated T cells
特記事項	<p>This product was changed from ascites to tissue culture supernatant on 19th June 2019. Please note that the dilutions may need to be adjusted accordingly. If you have any questions, please do not hesitate to contact our scientific support team.</p> <p>The Life Science industry has been in the grips of a reproducibility crisis for a number of years. Abcam is leading the way in addressing this with our range of recombinant monoclonal antibodies and knockout edited cell lines for gold-standard validation. Please check that this product meets your needs before purchasing.</p> <p>If you have any questions, special requirements or concerns, please send us an inquiry and/or contact our Support team ahead of purchase. Recommended alternatives for this product can be found below, along with publications, customer reviews and Q&As</p>

製品の特性

製品の状態	Liquid
保存方法	Shipped at 4°C. Store at +4°C.
バッファー	<p>pH: 7.30</p> <p>Preservative: 0.09% Sodium azide</p> <p>Constituents: 94.91% PBS, 5% BSA</p>
精製度	Affinity purified
特記事項 (精製)	Purified by affinity chromatography.
ポリ/モノ	モノクローナル
クローン名	B-A1

ミエローマ	x63-Ag8.653
アイソタイプ	IgG2a
軽鎖の種類	kappa

アプリケーション

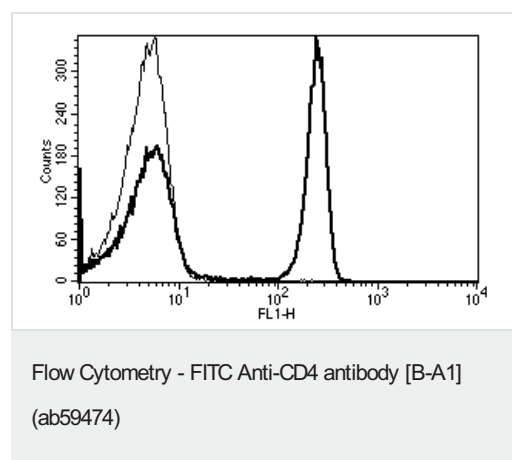
The Abpromise guarantee Abpromise保証は、次のテスト済みアプリケーションにおけるab59474の使用に適用されます
アプリケーションノートには、推奨の開始希釈率がありますが、適切な希釈率につきましてはご検討ください。

アプリケーション	Abreviews	特記事項
Flow Cyt	★★★★☆ (4)	Use at an assay dependent concentration. ab91362 - Mouse monoclonal IgG2a, is suitable for use as an isotype control with this antibody.

ターゲット情報

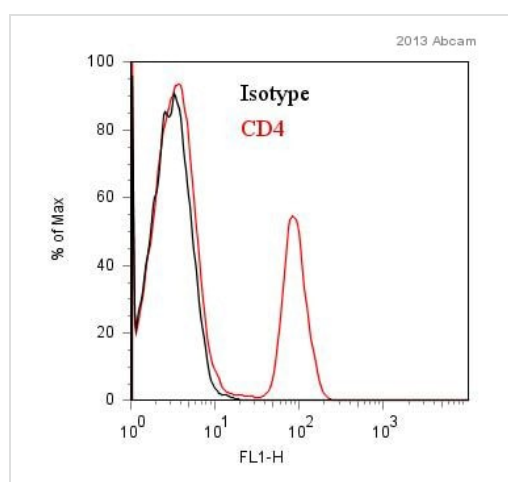
機能	Accessory protein for MHC class-II antigen/T-cell receptor interaction. May regulate T-cell activation. Induces the aggregation of lipid rafts.
配列類似性	Contains 3 Ig-like C2-type (immunoglobulin-like) domains. Contains 1 Ig-like V-type (immunoglobulin-like) domain.
翻訳後修飾	Palmitoylation and association with LCK contribute to the enrichment of CD4 in lipid rafts.
細胞内局在	Cell membrane. Localizes to lipid rafts. Removed from plasma membrane by HIV-1 Nef protein that increases clathrin-dependent endocytosis of this antigen to target it to lysosomal degradation. Cell surface expression is also down-modulated by HIV-1 Envelope polypeptide gp160 that interacts with, and sequesters CD4 in the endoplasmic reticulum.

画像



A typical staining pattern with the B-A1 monoclonal antibody of lymphocytes.

This image was generated using the ascites version of the product.



Flow Cytometry - FITC Anti-CD4 antibody [B-A1]
(ab59474)

This image is courtesy of an anonymous Abreview

Flow cytometry analysis of Cynomolgus Monkey whole blood after red blood cell lysis, staining CD4 with ab59474. Cells were fixed with paraformaldehyde. The sample was incubated with the primary antibody (1/100 in 1% BSA in PBS) for 1 hour at 4°C.

Gating Strategy: Live lymphocytes

This image was generated using the ascites version of the product.

Please note: All products are "FOR RESEARCH USE ONLY. NOT FOR USE IN DIAGNOSTIC PROCEDURES"

Our Abpromise to you: Quality guaranteed and expert technical support

- Replacement or refund for products not performing as stated on the datasheet
- Valid for 12 months from date of delivery
- Response to your inquiry within 24 hours
- We provide support in Chinese, English, French, German, Japanese and Spanish
- Extensive multi-media technical resources to help you
- We investigate all quality concerns to ensure our products perform to the highest standards

If the product does not perform as described on this datasheet, we will offer a refund or replacement. For full details of the Abpromise, please visit <https://www.abcam.co.jp/abpromise> or contact our technical team.

Terms and conditions

- Guarantee only valid for products bought direct from Abcam or one of our authorized distributors