

# FITC Anti-CD1a antibody [NA1/34-HLK] ab27992

## 1 References [画像数 1](#)

### 製品の概要

---

製品名	FITC Anti-CD1a antibody [NA1/34-HLK]
製品の詳細	FITC Mouse monoclonal [NA1/34-HLK] to CD1a
由来種	Mouse
標識	FITC. Ex: 493nm, Em: 528nm
アプリケーション	<b>適用あり:</b> Flow Cyt
種交差性	<b>交差種:</b> Human, Cynomolgus monkey
免疫原	Tissue, cells or virus corresponding to Human CD1a. Human thymocytes
ポジティブ・コントロール	MOLT4 cells
特記事項	<p>The Life Science industry has been in the grips of a reproducibility crisis for a number of years. Abcam is leading the way in addressing this with our range of recombinant monoclonal antibodies and knockout edited cell lines for gold-standard validation. Please check that this product meets your needs before purchasing.</p> <p>If you have any questions, special requirements or concerns, please send us an inquiry and/or contact our Support team ahead of purchase. Recommended alternatives for this product can be found below, along with publications, customer reviews and Q&amp;As</p>

### 製品の特性

---

製品の状態	Liquid
保存方法	Shipped at 4°C. Store at +4°C.
バッファー	pH: 7.40 Preservative: 0.09% Sodium azide Constituents: PBS, 1% BSA
精製度	Protein G purified
ポリ/モノ	モノクローナル
クローン名	NA1/34-HLK
ミエローマ	NS1/1-Ag4-1
アイソタイプ	IgG2a

## アプリケーション

**The Abpromise guarantee** Abpromise保証は、次のテスト済みアプリケーションにおけるab27992の使用に適用されます  
アプリケーションノートには、推奨の開始希釈率がありますが、適切な希釈率につきましてはご検討ください。

アプリケーション	Abreviews	特記事項
Flow Cyt		

### 追加情報

Flow Cyt: Use 10 $\mu$ l of the suggested working dilution (neat - 1/10) for 10<sup>6</sup> cells in 100 $\mu$ l.

Not yet tested in other applications.

Optimal dilutions/concentrations should be determined by the end user.

## ターゲット情報

### 機能

Antigen-presenting protein that binds self and non-self lipid and glycolipid antigens and presents them to T-cell receptors on natural killer T-cells.

### 組織特異性

Expressed on cortical thymocytes, epidermal Langerhans cells, dendritic cells, on certain T-cell leukemias, and in various other tissues.

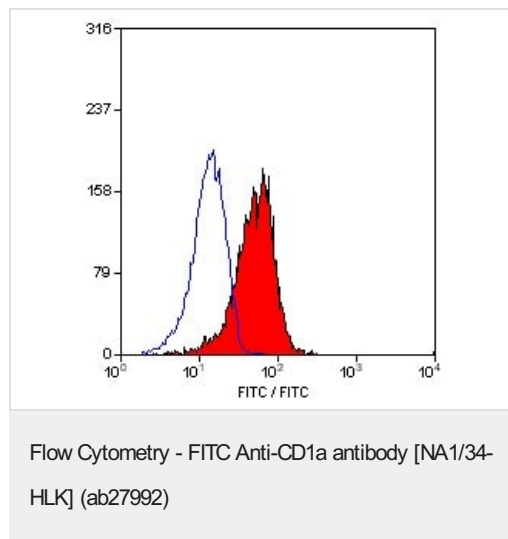
### 配列類似性

Contains 1 Ig-like (immunoglobulin-like) domain.

### 細胞内局在

Cell membrane. Endosome membrane. Subject to intracellular trafficking between the cell membrane and endosomes. Localizes to cell surface lipid rafts.

## 画像



FACS analysis of CD1a expression in MOLT4 cells using FITC conjugated ab27992 at 10 $\mu$ l for 10<sup>6</sup> cells in 100 $\mu$ l.

**Please note:** All products are "FOR RESEARCH USE ONLY. NOT FOR USE IN DIAGNOSTIC PROCEDURES"

## Our Abpromise to you: Quality guaranteed and expert technical support

- Replacement or refund for products not performing as stated on the datasheet

- Valid for 12 months from date of delivery
- Response to your inquiry within 24 hours
  
- We provide support in Chinese, English, French, German, Japanese and Spanish
- Extensive multi-media technical resources to help you
- We investigate all quality concerns to ensure our products perform to the highest standards

If the product does not perform as described on this datasheet, we will offer a refund or replacement. For full details of the Abpromise, please visit <https://www.abcam.co.jp/abpromise> or contact our technical team.

### **Terms and conditions**

---

- Guarantee only valid for products bought direct from Abcam or one of our authorized distributors