

FITC Anti-CD1a antibody [HI149] ab18231

画像数 1

製品の概要

製品名	FITC Anti-CD1a antibody [HI149]
製品の詳細	FITC Mouse monoclonal [HI149] to CD1a
由来種	Mouse
標識	FITC. Ex: 493nm, Em: 528nm
特異性	This antibody does not react with peripheral blood T and B lymphocytes, monocytes, granulocytes, platelets and erythrocytes.
アプリケーション	適用あり: Flow Cyt
種交差性	交差種: Human
免疫原	Tissue, cells or virus corresponding to Human CD1a. Human thymocytes
ポジティブ・コントロール	Flow Cyt: Human MOLT-4 cells.
特記事項	<p>This reagent is free of unconjugated FITC and adjusted for direct use.</p> <p>The Life Science industry has been in the grips of a reproducibility crisis for a number of years. Abcam is leading the way in addressing this with our range of recombinant monoclonal antibodies and knockout edited cell lines for gold-standard validation. Please check that this product meets your needs before purchasing.</p> <p>If you have any questions, special requirements or concerns, please send us an inquiry and/or contact our Support team ahead of purchase. Recommended alternatives for this product can be found below, along with publications, customer reviews and Q&As</p>

製品の特性

製品の状態	Liquid
保存方法	Shipped at 4°C. Store at +4°C.
バッファー	<p>pH: 7.40</p> <p>Preservative: 0.097% Sodium azide</p> <p>Constituents: PBS, BSA</p>
ポリ/モノ	モノクローナル
クローン名	HI149
アイソタイプ	IgG1

アプリケーション

The Abpromise guarantee Abpromise保証は、次のテスト済みアプリケーションにおけるab18231の使用に適用されます
アプリケーションノートには、推奨の開始希釈率がありますが、適切な希釈率につきましてはご確認ください。

アプリケーション	Abreviews	特記事項
Flow Cyt		

追加情報

Flow Cyt: Use 20µl for 10 million cells.

Not tested in other applications.

Optimal dilutions/concentrations should be determined by the end user.

ターゲット情報

機能

Antigen-presenting protein that binds self and non-self lipid and glycolipid antigens and presents them to T-cell receptors on natural killer T-cells.

組織特異性

Expressed on cortical thymocytes, epidermal Langerhans cells, dendritic cells, on certain T-cell leukemias, and in various other tissues.

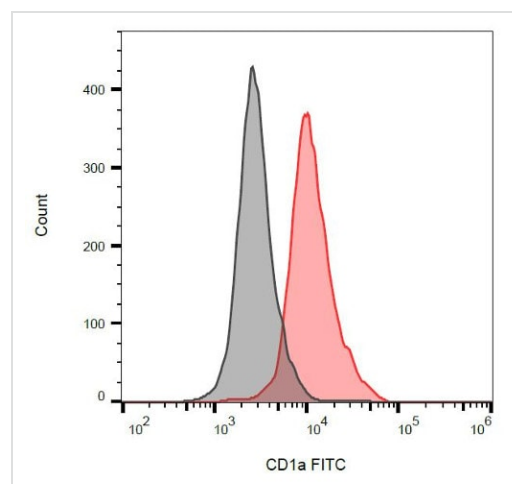
配列類似性

Contains 1 Ig-like (immunoglobulin-like) domain.

細胞内局在

Cell membrane. Endosome membrane. Subject to intracellular trafficking between the cell membrane and endosomes. Localizes to cell surface lipid rafts.

画像



Flow Cytometry analysis of MOLT4 cells (red) compared with blank (grey) labeling CD1a with Anti-CD1a antibody [HI149] (FITC) (ab18231).

Flow Cytometry - FITC Anti-CD1a antibody [HI149]
(ab18231)

Please note: All products are "FOR RESEARCH USE ONLY. NOT FOR USE IN DIAGNOSTIC PROCEDURES"

Our Abpromise to you: Quality guaranteed and expert technical support

- Replacement or refund for products not performing as stated on the datasheet
- Valid for 12 months from date of delivery
- Response to your inquiry within 24 hours

- We provide support in Chinese, English, French, German, Japanese and Spanish
- Extensive multi-media technical resources to help you
- We investigate all quality concerns to ensure our products perform to the highest standards

If the product does not perform as described on this datasheet, we will offer a refund or replacement. For full details of the Abpromise, please visit <https://www.abcam.co.jp/abpromise> or contact our technical team.

Terms and conditions

- Guarantee only valid for products bought direct from Abcam or one of our authorized distributors