

FITC Anti-CD147 antibody [MEM-M6/1] ab69771

2 References [画像数 1](#)

製品の概要

製品名	FITC Anti-CD147 antibody [MEM-M6/1]
製品の詳細	FITC Mouse monoclonal [MEM-M6/1] to CD147
由来種	Mouse
標識	FITC. Ex: 493nm, Em: 528nm
特異性	ab69771 recognizes an epitope in the N-terminal Ig domain (D1) of CD147 and is a high-affinity antibody capable of binding to unstimulated peripheral blood T cells.
アプリケーション	適用あり: Flow Cyt
種交差性	交差種: Human
免疫原	Protein A chromatography purified soluble recombinant form of CD147, CD147Rg, which consists of the cDNA coding for the hinge region, CH2-and CH3 domain of human IgG1 (CD147Rg is secreted by transfectants as a dimmer).
特記事項	<p>The purified antibody is conjugated with Fluorescein isothiocyanate (FITC) under optimum conditions. The reagent is free of unconjugated FITC.</p> <p>The Life Science industry has been in the grips of a reproducibility crisis for a number of years. Abcam is leading the way in addressing this with our range of recombinant monoclonal antibodies and knockout edited cell lines for gold-standard validation. Please check that this product meets your needs before purchasing.</p> <p>If you have any questions, special requirements or concerns, please send us an inquiry and/or contact our Support team ahead of purchase. Recommended alternatives for this product can be found below, along with publications, customer reviews and Q&As</p>

製品の特性

製品の状態	Liquid
保存方法	Shipped at 4°C. Store at +4°C.
バッファー	pH: 7.4 Preservative: 0.097% Sodium azide Constituents: 0.2% BSA, PBS
精製度	Size exclusion
ポリ/モノ	モノクローナル

クローン名	MEM-M6/1
アイソタイプ	IgG1

アプリケーション

The Abpromise guarantee **Abpromise保証は、** 次のテスト済みアプリケーションにおけるab69771の使用に適用されます
アプリケーションノートには、推奨の開始希釈率がありますが、適切な希釈率につきましてはご検討ください。

アプリケーション	Abreviews	特記事項
Flow Cyt		

追加情報 Flow Cyt: Use 20µl for 10⁶ cells or 100µl whole blood.

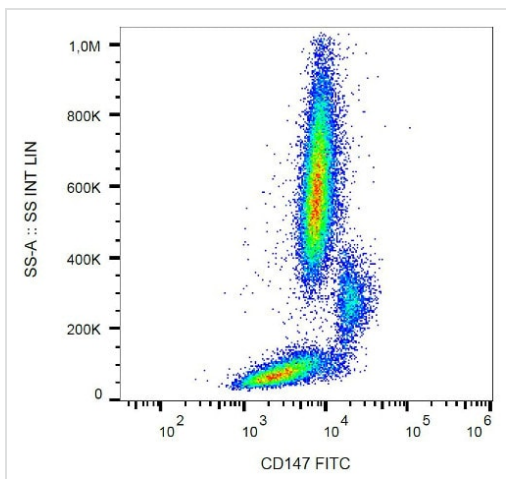
Not yet tested in other applications.

Optimal dilutions/concentrations should be determined by the end user.

ターゲット情報

機能	Plays pivotal roles in spermatogenesis, embryo implantation, neural network formation and tumor progression. Stimulates adjacent fibroblasts to produce matrix metalloproteinases (MMPS). May target monocarboxylate transporters SLC16A1, SLC16A3 and SLC16A8 to plasma membranes of retinal pigment epithelium and neural retina. Seems to be a receptor for oligomannosidic glycans. In vitro, promotes outgrowth of astrocytic processes.
組織特異性	Present only in vascular endothelium in non-neoplastic regions of the brain, whereas it is present in tumor cells but not in proliferating blood vessels in malignant gliomas.
配列類似性	Contains 1 Ig-like C2-type (immunoglobulin-like) domain. Contains 1 Ig-like V-type (immunoglobulin-like) domain.
翻訳後修飾	N-glycosylated.
細胞内局在	Cell membrane. Melanosome. Colocalizes with SLC16A1 and SLC16A8 (By similarity). Identified by mass spectrometry in melanosome fractions from stage I to stage IV.

画像



Surface staining of human peripheral blood with anti-human CD147 (MEM-M6/1) FITC.

Flow Cytometry - FITC Anti-CD147 antibody [MEM-M6/1] (ab69771)

Please note: All products are "FOR RESEARCH USE ONLY. NOT FOR USE IN DIAGNOSTIC PROCEDURES"

Our Abpromise to you: Quality guaranteed and expert technical support

- Replacement or refund for products not performing as stated on the datasheet
- Valid for 12 months from date of delivery
- Response to your inquiry within 24 hours
- We provide support in Chinese, English, French, German, Japanese and Spanish
- Extensive multi-media technical resources to help you
- We investigate all quality concerns to ensure our products perform to the highest standards

If the product does not perform as described on this datasheet, we will offer a refund or replacement. For full details of the Abpromise, please visit <https://www.abcam.co.jp/abpromise> or contact our technical team.

Terms and conditions

- Guarantee only valid for products bought direct from Abcam or one of our authorized distributors