


### FITC Anti-CD14 antibody [MEM-18] ab239250

画像数 1

#### 製品の概要

製品名	FITC Anti-CD14 antibody [MEM-18]
製品の詳細	FITC Mouse monoclonal [MEM-18] to CD14
由来種	Mouse
標識	FITC. Ex: 493nm, Em: 528nm
アプリケーション	適用あり: Flow Cyt
種交差性	交差種: Human 交差が予測される動物種: Non human primates 
免疫原	Full length native protein (purified) corresponding to Human CD14. (A crude mixture of human urinary proteins precipitated by ammonium sulphate from the urine of a patient suffering from proteinuria).
ポジティブ・コントロール	Flow Cyt: Human peripheral blood leukocytes.
特記事項	<p>The Life Science industry has been in the grips of a reproducibility crisis for a number of years. Abcam is leading the way in addressing this with our range of recombinant monoclonal antibodies and knockout edited cell lines for gold-standard validation. Please check that this product meets your needs before purchasing.</p> <p>If you have any questions, special requirements or concerns, please send us an inquiry and/or contact our Support team ahead of purchase. Recommended alternatives for this product can be found below, along with publications, customer reviews and Q&amp;As</p>

#### 製品の特性

製品の状態	Liquid
保存方法	Shipped at 4°C. Store at +4°C. Store In the Dark.
バッファー	pH: 7.4 Preservative: 0.0975% Sodium azide Constituent: PBS
精製度	Size exclusion
特記事項 (精製)	Purified antibody is conjugated with Fluorescein isothiocyanate (FITC) under optimum conditions. The reagent is free of unconjugated FITC and adjusted for direct use. No reconstitution is necessary.

ポリ/モノ	モノクローナル
クローン名	MEM-18
アイソタイプ	IgG1

## アプリケーション

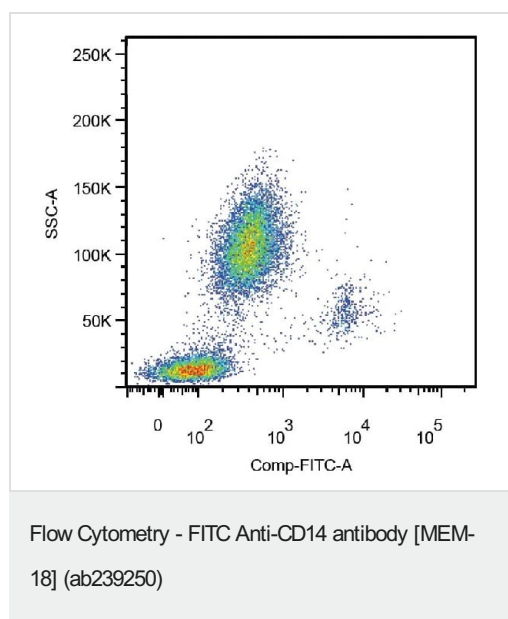
**The Abpromise guarantee** **Abpromise保証は、**次のテスト済みアプリケーションにおけるab239250の使用に適用されます  
アプリケーションノートには、推奨の開始希釈率がありますが、適切な希釈率につきましてはご検討ください。

アプリケーション	Abreviews	特記事項
Flow Cyt		Use 20µl for 10 <sup>6</sup> cells. (or 100 µl of whole blood).

## ターゲット情報

機能	Cooperates with MD-2 and TLR4 to mediate the innate immune response to bacterial lipopolysaccharide (LPS). Acts via MyD88, TIRAP and TRAF6, leading to NF-kappa-B activation, cytokine secretion and the inflammatory response. Up-regulates cell surface molecules, including adhesion molecules.
組織特異性	Expressed strongly on the surface of monocytes and weakly on the surface of granulocytes; also expressed by most tissue macrophages.
配列類似性	Contains 11 LRR (leucine-rich) repeats.
翻訳後修飾	N- and O- glycosylated. O-glycosylated with a core 1 or possibly core 8 glycan.
細胞内局在	Cell membrane.

## 画像



Flow cytometric analysis of human peripheral blood leukocytes labeling CD14 with ab239250. Surface staining. Gated on leukocytes.

### **Our Abpromise to you: Quality guaranteed and expert technical support**

---

- Replacement or refund for products not performing as stated on the datasheet
- Valid for 12 months from date of delivery
- Response to your inquiry within 24 hours
- We provide support in Chinese, English, French, German, Japanese and Spanish
- Extensive multi-media technical resources to help you
- We investigate all quality concerns to ensure our products perform to the highest standards

If the product does not perform as described on this datasheet, we will offer a refund or replacement. For full details of the Abpromise, please visit <https://www.abcam.co.jp/abpromise> or contact our technical team.

### **Terms and conditions**

---

- Guarantee only valid for products bought direct from Abcam or one of our authorized distributors