

# FITC Anti-CD14 antibody [MEM-15] ab28061

★★★★★ [6 Abreviews](#) [7 References](#) [画像数 2](#)

### 製品の概要

---

製品名	FITC Anti-CD14 antibody [MEM-15]
製品の詳細	FITC Mouse monoclonal [MEM-15] to CD14
由来種	Mouse
標識	FITC. Ex: 493nm, Em: 528nm
特異性	Ab28061 recognises CD14 expressed strongly on the surface of monocytes and weakly on the surface of granulocytes; also expressed by most tissue macrophages. Ab28061 also recognises soluble forms of CD14 found in serum and in the urine of some nephrotic patients.
アプリケーション	<b>適用あり:</b> Flow Cyt
種交差性	<b>交差種:</b> Human
免疫原	Full length native protein (purified): A crude mixture of human urinary proteins precipitated by ammonium sulphate from the urine of a patient suffering from proteinuria.
特記事項	<p>The antibody is free of unconjugated FITC.</p> <p>The Life Science industry has been in the grips of a reproducibility crisis for a number of years. Abcam is leading the way in addressing this with our range of recombinant monoclonal antibodies and knockout edited cell lines for gold-standard validation. Please check that this product meets your needs before purchasing.</p> <p>If you have any questions, special requirements or concerns, please send us an inquiry and/or contact our Support team ahead of purchase. Recommended alternatives for this product can be found below, along with publications, customer reviews and Q&amp;As</p>

### 製品の特性

---

製品の状態	Liquid
保存方法	Shipped at 4°C. Store at +4°C.
バッファー	pH: 7.4 Preservative: 0.097% Sodium azide Constituent: 0.2% BSA
精製度	High grade protease free BSA Protein A purified
ポリ/モノ	モノクローナル

クローン名 MEM-15  
 アイソタイプ IgG1

アプリケーション

The Abpromise guarantee **Abpromise保証は、次のテスト済みアプリケーションにおけるab28061の使用に適用されず**  
 アプリケーションノートには、推奨の開始希釈率がありますが、適切な希釈率につきましてはご検討ください。

アプリケーション	Abreviews	特記事項
Flow Cyt	★★★★★ (1)	Use 20µl for 10 <sup>6</sup> cells. or 100 µl of whole blood.

ターゲット情報

**機能** Cooperates with MD-2 and TLR4 to mediate the innate immune response to bacterial lipopolysaccharide (LPS). Acts via MyD88, TIRAP and TRAF6, leading to NF-kappa-B activation, cytokine secretion and the inflammatory response. Up-regulates cell surface molecules, including adhesion molecules.

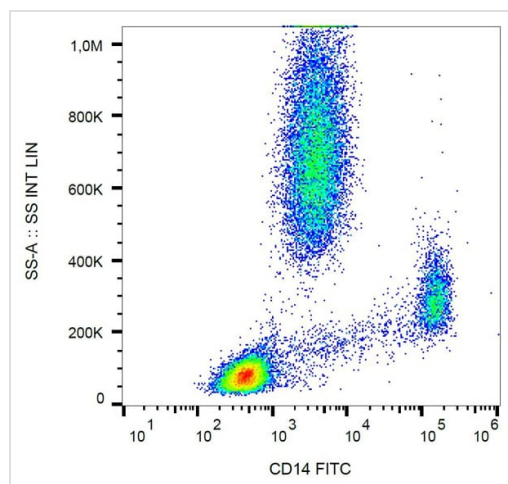
**組織特異性** Expressed strongly on the surface of monocytes and weakly on the surface of granulocytes; also expressed by most tissue macrophages.

**配列類似性** Contains 11 LRR (leucine-rich) repeats.

**翻訳後修飾** N- and O- glycosylated. O-glycosylated with a core 1 or possibly core 8 glycan.

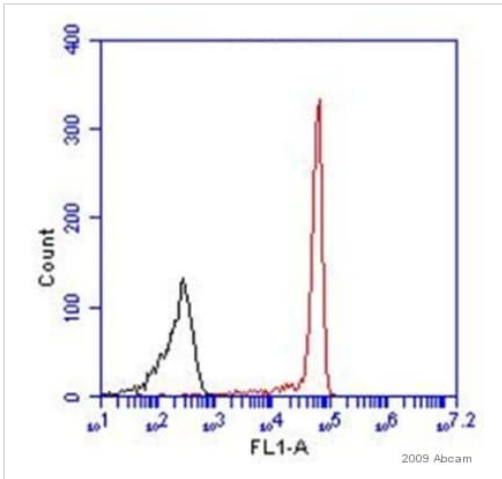
**細胞内局在** Cell membrane.

画像



Flow cytometry analysis of human peripheral blood cells labelling CD14 with ab28061.

Flow Cytometry - FITC Anti-CD14 antibody [MEM-15] (ab28061)



Flow Cytometry - FITC Anti-CD14 antibody [MEM-15] (ab28061)

This image is courtesy of an anonymous Abreview

ab28061 staining CD14 in peripheral blood mononuclear cells by flow cytometry. The fibroblasts were prepared using 10 uL FITC antiCD14 to 50 uL (~100,000) cells in PBS/5%FCS and incubated on ice for 45 min. Cells were gated on viable cells.

**Please note:** All products are "FOR RESEARCH USE ONLY. NOT FOR USE IN DIAGNOSTIC PROCEDURES"

### Our Abpromise to you: Quality guaranteed and expert technical support

- Replacement or refund for products not performing as stated on the datasheet
- Valid for 12 months from date of delivery
- Response to your inquiry within 24 hours
- We provide support in Chinese, English, French, German, Japanese and Spanish
- Extensive multi-media technical resources to help you
- We investigate all quality concerns to ensure our products perform to the highest standards

If the product does not perform as described on this datasheet, we will offer a refund or replacement. For full details of the Abpromise, please visit <https://www.abcam.co.jp/abpromise> or contact our technical team.

### Terms and conditions

- Guarantee only valid for products bought direct from Abcam or one of our authorized distributors