

# Anti-FITC antibody [F4/1] ab112511

**3 References**   [画像数 3](#)

### 製品の概要

製品名	Anti-FITC antibody [F4/1]
製品の詳細	Mouse monoclonal [F4/1] to FITC
由来種	Mouse
アプリケーション	<b>適用あり:</b> IP, IHC-Fr, Flow Cyt
種交差性	<b>交差種:</b> Species independent
免疫原	FITC conjugated to KLH
特記事項	<p>The Life Science industry has been in the grips of a reproducibility crisis for a number of years. Abcam is leading the way in addressing this with our range of recombinant monoclonal antibodies and knockout edited cell lines for gold-standard validation. Please check that this product meets your needs before purchasing.</p> <p>If you have any questions, special requirements or concerns, please send us an inquiry and/or contact our Support team ahead of purchase. Recommended alternatives for this product can be found below, along with publications, customer reviews and Q&amp;As</p>

### 製品の特性

製品の状態	Liquid
保存方法	Shipped at 4°C. Upon delivery aliquot and store at -20°C. Avoid freeze / thaw cycles.
バッファー	Preservative: 0.02% Sodium azide Constituent: 99% PBS
精製度	Protein G purified
特記事項(精製)	Purified from tissue culture supernatant
ポリ/モノ	モノクローナル
クローン名	F4/1
ミエローマ	Sp2/0-Ag14
アイソタイプ	IgG1
軽鎖の種類	kappa

### アプリケーション

## The Abpromise guarantee

**Abpromise保証は、**次のテスト済みアプリケーションにおけるab112511の使用に適用されます

アプリケーションノートには、推奨の開始希釈率がありますが、適切な希釈率につきましてはご検討ください。

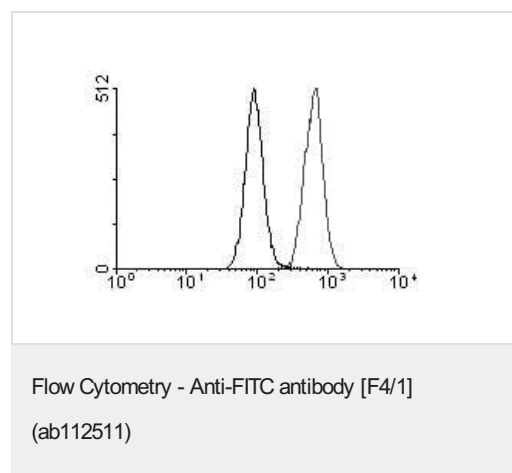
アプリケーション	Abreviews	特記事項
IP		Use at an assay dependent concentration.
IHC-Fr		Use at an assay dependent concentration. acetone-fixed
Flow Cyt		Use at an assay dependent concentration. <b>ab170190</b> - Mouse monoclonal IgG1, is suitable for use as an isotype control with this antibody.

## ターゲット情報

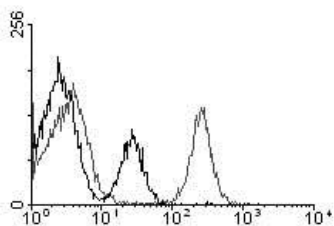
### 関連性

FITC (fluorescein isothiocyanate) is a fluorochrome dye that absorbs ultraviolet or blue light causing molecules to become excited and emit a visible yellow-green light. This emission ceases upon removal of the light causing the excitation. Fluorochrome labeling provides rapid, accurate localization of antigen-antibody interaction when one of the reactants is part of a cell, tissue or other biological structure. FITC is a commonly used marker for antibodies in immunofluorescent techniques since the conjugation of FITC to proteins is relatively easy and does not, in general, destroy the biological activity of the labeled protein. FITC is widely used as a hapten to label different proteins.

## 画像

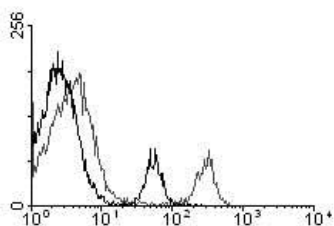


Fluorescence quenching of FITC-labelled CD45 antibody using ab112511 at 10 µg/ml. Control IgG1



Flow Cytometry - Anti-FITC antibody [F4/1]  
(ab112511)

Fluorescence quenching of FITC-labelled B220 antibody using  
ab112511 at 10 µg/ml. Control IgG1



Flow Cytometry - Anti-FITC antibody [F4/1]  
(ab112511)

Fluorescence quenching of FITC-labelled CD8 antibody using  
ab112511 at 10 µg/ml. Control IgG1

**Please note:** All products are "FOR RESEARCH USE ONLY. NOT FOR USE IN DIAGNOSTIC PROCEDURES"

### Our Abpromise to you: Quality guaranteed and expert technical support

- Replacement or refund for products not performing as stated on the datasheet
- Valid for 12 months from date of delivery
- Response to your inquiry within 24 hours
- We provide support in Chinese, English, French, German, Japanese and Spanish
- Extensive multi-media technical resources to help you
- We investigate all quality concerns to ensure our products perform to the highest standards

If the product does not perform as described on this datasheet, we will offer a refund or replacement. For full details of the Abpromise, please visit <https://www.abcam.co.jp/abpromise> or contact our technical team.

### Terms and conditions

- Guarantee only valid for products bought direct from Abcam or one of our authorized distributors