

FITC Anti-6X His tag® antibody ab1206

★★★★★ [7 Abreviews](#) [28 References](#) [画像数 2](#)

製品の概要

製品名	FITC Anti-6X His tag® antibody
製品の詳細	FITC Rabbit polyclonal to 6X His tag®
由来種	Rabbit
標識	FITC. Ex: 493nm, Em: 528nm
アプリケーション	適用あり: ELISA, Flow Cyt
種交差性	交差種: Species independent
免疫原	Synthetic peptide corresponding to 6X His tag® conjugated to keyhole limpet haemocyanin. Run BLAST with ExPASy Run BLAST with NCBI
特記事項	Molar F/P ratio is 3.7:1. HIS-TAG® is a trademark of EMD Biosciences, Inc. The Life Science industry has been in the grips of a reproducibility crisis for a number of years. Abcam is leading the way in addressing this with our range of recombinant monoclonal antibodies and knockout edited cell lines for gold-standard validation. Please check that this product meets your needs before purchasing. If you have any questions, special requirements or concerns, please send us an inquiry and/or contact our Support team ahead of purchase. Recommended alternatives for this product can be found below, along with publications, customer reviews and Q&As

製品の特性

製品の状態	Liquid
保存方法	Shipped at 4°C. Store at +4°C.
バッファー	pH: 7.20 Preservative: 0.09% Sodium azide Constituents: PBS, 0.2% BSA
精製度	Immunogen affinity purified
特記事項 (精製)	Antibodies were immunoaffinity purified using the peptide conjugated to a solid-phase support and conjugated to fluorescein isothiocyanate.
ポリモノ	ポリクローナル
アイソタイプ	IgG

アプリケーション

The Abpromise guarantee **Abpromise保証は、次のテスト済みアプリケーションにおけるab1206の使用に適用されます**
アプリケーションノートには、推奨の開始希釈率がありますが、適切な希釈率につきましてはご確認ください。

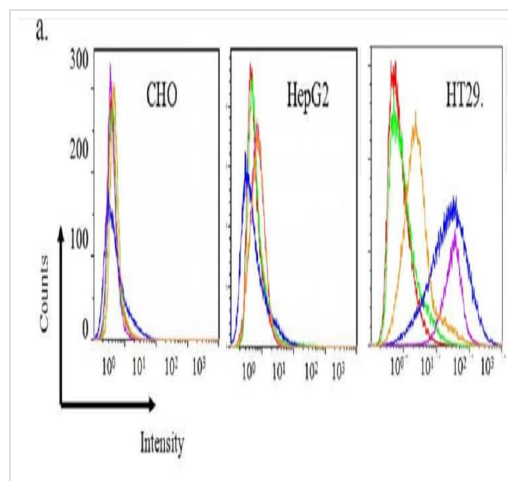
アプリケーション	Abreviews	特記事項
ELISA	★★★★☆ (1)	Use at an assay dependent concentration.
Flow Cyt	★★★★★ (5)	Use at an assay dependent concentration. ab37406 - Rabbit polyclonal IgG, is suitable for use as an isotype control with this antibody.

ターゲット情報

関連性 The H-H-H-H-H-H motif is used as a tag on many recombinant proteins to facilitate purification. His-tags can be fused to the amino- or carboxy- termini of proteins in transfected or transformed cells.

細胞内局在 Depends upon the localization of the parent protein tagged with hexahistidine.

画像

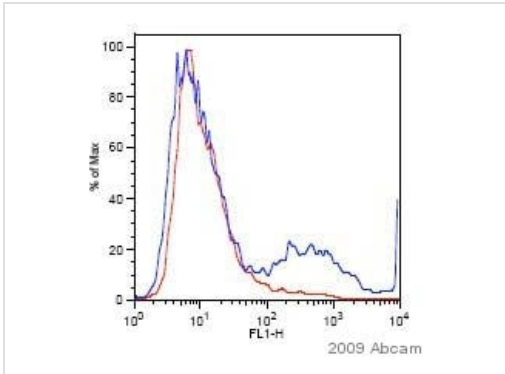


Muc1-Bi-1 and Muc1-Bi-2 can recognize Muc1 positive tumor cells.

a). Flow cytometry analysis of Muc1-Bi-1 and Muc1-Bi-2 on Muc1-negative cell lines HePG2 and CHO and Muc1-positive cell lines, HT29. Red line indicates cells with no staining; green line indicates cells with only anti-His-FITC staining (ab1206); blue line indicates cells with positive control anti-Muc1 antibody; purple line indicates cells with Muc1-Bi-1 protein; orange line indicates cells with Muc1-Bi-2 protein.

Flow Cytometry - FITC Anti-6X His tag® antibody
(ab1206)

Li et al PLoS One. 2018 Jan 22;13(1):e0191024. doi: 10.1371/journal.pone.0191024. eCollection 2018. Fig 2. Reproduced under the Creative Commons license <http://creativecommons.org/licenses/by/4.0/>



Flow Cytometry - FITC Anti-6X His tag[®] antibody
(ab1206)

This image is courtesy of an anonymous Abreview

ab1206 staining 6X His tag[®] in human endometrial carcinoma cells by Flow Cytometry.

Cells were prepared by short trypsinisation in PBS/1% FBS/0.2% sodium azide and fixed with formaldehyde. The gate included all single cells. The sample was incubated with a 6X His tag[®] primary antibody for 1 hour at 4°C. ab1206 was used as the secondary. On the image, the red line represents cells stained with ab1206 alone, and the blue line is the tested sample carrying a 6X His tag[®]. The small peak to the right represents cells that bound the tested sample.

Please note: All products are "FOR RESEARCH USE ONLY. NOT FOR USE IN DIAGNOSTIC PROCEDURES"

Our Abpromise to you: Quality guaranteed and expert technical support

- Replacement or refund for products not performing as stated on the datasheet
- Valid for 12 months from date of delivery
- Response to your inquiry within 24 hours
- We provide support in Chinese, English, French, German, Japanese and Spanish
- Extensive multi-media technical resources to help you
- We investigate all quality concerns to ensure our products perform to the highest standards

If the product does not perform as described on this datasheet, we will offer a refund or replacement. For full details of the Abpromise, please visit <https://www.abcam.co.jp/abpromise> or contact our technical team.

Terms and conditions

- Guarantee only valid for products bought direct from Abcam or one of our authorized distributors