

FITC Anti-2B4 antibody [DM244] ab95806

画像数 1

製品の概要

製品名	FITC Anti-2B4 antibody [DM244]
製品の詳細	FITC Mouse monoclonal [DM244] to 2B4
由来種	Mouse
標識	FITC. Ex: 493nm, Em: 528nm
アプリケーション	適用あり: Flow Cyt
種交差性	交差種: Human
免疫原	The details of the immunogen for this antibody are not available.
ポジティブ・コントロール	Normal human peripheral blood cells.
特記事項	<p>ab95806 is available as 20 µl (0.06 µg)/test. A test is defined as the amount (µg)/test of antibody that will stain, by flow cytometry, a cell sample in a final volume of 100 µL.</p> <p>The Life Science industry has been in the grips of a reproducibility crisis for a number of years. Abcam is leading the way in addressing this with our range of recombinant monoclonal antibodies and knockout edited cell lines for gold-standard validation. Please check that this product meets your needs before purchasing.</p> <p>If you have any questions, special requirements or concerns, please send us an inquiry and/or contact our Support team ahead of purchase. Recommended alternatives for this product can be found below, along with publications, customer reviews and Q&As</p>

製品の特性

製品の状態	Liquid
保存方法	Shipped at 4°C. Store at +4°C.
バッファー	<p>pH: 7.20</p> <p>Preservative: 0.09% Sodium azide</p> <p>Constituent: 0.87% Sodium chloride</p>
精製度	Protein G purified
ポリ/モノ	モノクローナル
クローン名	DM244
アイソタイプ	IgG1
軽鎖の種類	kappa

アプリケーション

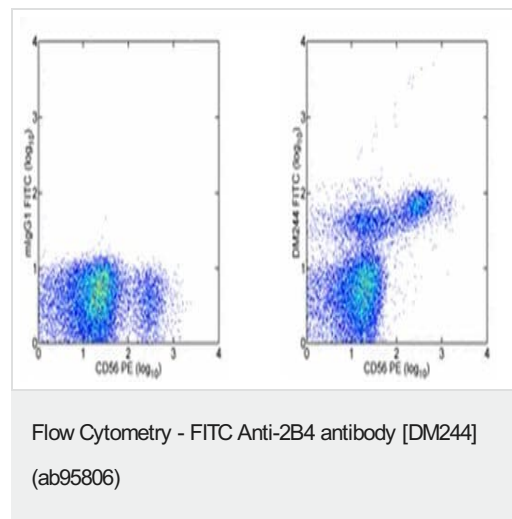
The Abpromise guarantee Abpromise保証は、 次のテスト済みアプリケーションにおけるab95806の使用に適用されます
アプリケーションノートには、推奨の開始希釈率がありますが、適切な希釈率につきましてはご検討ください。

アプリケーション	Abreviews	特記事項
Flow Cyt		Use 5µl for 10 ⁶ cells. ab106163 - Mouse monoclonal IgG1, is suitable for use as an isotype control with this antibody.

ターゲット情報

機能	Modulate other receptor-ligand interactions to enhance leukocyte activation.
組織特異性	Expressed in spleen, PBL, followed by lung, liver, testis and small intestine. Expressed not only in NK cells, but also on monocytes and basophils.
配列類似性	Contains 2 Ig-like (immunoglobulin-like) domains.
細胞内局在	Membrane.

画像



Staining of normal human peripheral blood cells with Anti-Human CD56 PE and Mouse IgG1 Isotype Control FITC (left) or ab95806 (right). Total viable cells were used for analysis.

Please note: All products are "FOR RESEARCH USE ONLY. NOT FOR USE IN DIAGNOSTIC PROCEDURES"

Our Abpromise to you: Quality guaranteed and expert technical support

- Replacement or refund for products not performing as stated on the datasheet
- Valid for 12 months from date of delivery
- Response to your inquiry within 24 hours
- We provide support in Chinese, English, French, German, Japanese and Spanish

- Extensive multi-media technical resources to help you
- We investigate all quality concerns to ensure our products perform to the highest standards

If the product does not perform as described on this datasheet, we will offer a refund or replacement. For full details of the Abpromise, please visit <https://www.abcam.co.jp/abpromise> or contact our technical team.

Terms and conditions

- Guarantee only valid for products bought direct from Abcam or one of our authorized distributors