

Anti-Firefly Luciferase antibody [EPR17790] ab185924

リコンビナント RabMAb[®]

★★★★☆ **4 Abreviews** **13 References** **画像数 6**

製品の概要

製品名	Anti-Firefly Luciferase antibody [EPR17790]
製品の詳細	Rabbit monoclonal [EPR17790] to Firefly Luciferase
由来種	Rabbit
アプリケーション	適用あり: Flow Cyt, ICC/IF, WB
種交差性	交差種: Firefly
免疫原	Synthetic peptide. This information is proprietary to Abcam and/or its suppliers.
ポジティブ・コントロール	WB: Firefly Luciferase transfected HEK293 whole cell lysate. ICC/IF: Firefly Luciferase transfected HEK293T cells.
特記事項	<p>This product is a recombinant monoclonal antibody, which offers several advantages including:</p> <ul style="list-style-type: none">- High batch-to-batch consistency and reproducibility- Improved sensitivity and specificity- Long-term security of supply- Animal-free production <p>For more information see here.</p> <p>Our RabMAb[®] technology is a patented hybridoma-based technology for making rabbit monoclonal antibodies. For details on our patents, please refer to RabMAb[®] patents.</p>

製品の特性

製品の状態	Liquid
保存方法	Shipped at 4°C. Store at +4°C short term (1-2 weeks). Upon delivery aliquot. Store at -20°C long term. Avoid freeze / thaw cycle.
バッファー	pH: 7.2 Preservative: 0.01% Sodium azide Constituents: 59% PBS, 0.05% BSA, 40% Glycerol
精製度	Protein A purified
ポリ/モノ	モノクローナル
クローン名	EPR17790
アイソタイプ	IgG

アプリケーション

The Abpromise guarantee **Abpromise保証は、次のテスト済みアプリケーションにおけるab185924の使用に適用されます**
 アプリケーションノートには、推奨の開始希釈率がありますが、適切な希釈率につきましてはご検討ください。

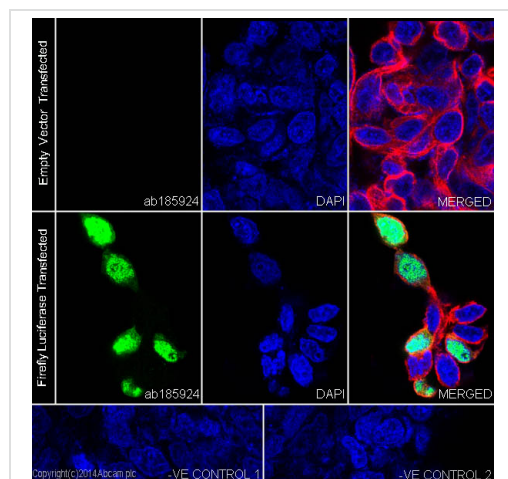
アプリケーション	Abreviews	特記事項
Flow Cyt		Use at an assay dependent concentration.
ICC/IF	★★★★☆ (1)	1/500.
WB	★★★★☆ (1)	1/20000. Detects a band of approximately 61 kDa (predicted molecular weight: 61 kDa).

ターゲット情報

関連性 Luciferase from the firefly has become one of the more widely used reporter proteins for the study of gene expression. Luciferase catalyzes a bioluminescent reaction which requires the substrate luciferin as well as Mg²⁺ and ATP. Mixing these reagents with the cell extract containing luciferase, results in a flash of light that decays rapidly. This light can be detected by a luminometer. The total light emission is proportional to the luciferase activity of the sample.

細胞内局在 Peroxisome

画像

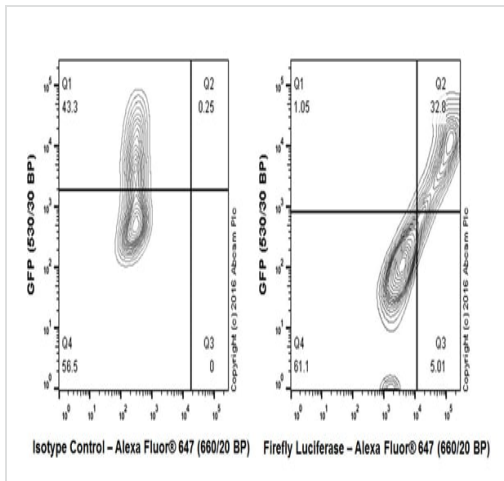


Immunocytochemistry/ Immunofluorescence - Anti-Firefly Luciferase antibody [EPR17790] (ab185924)

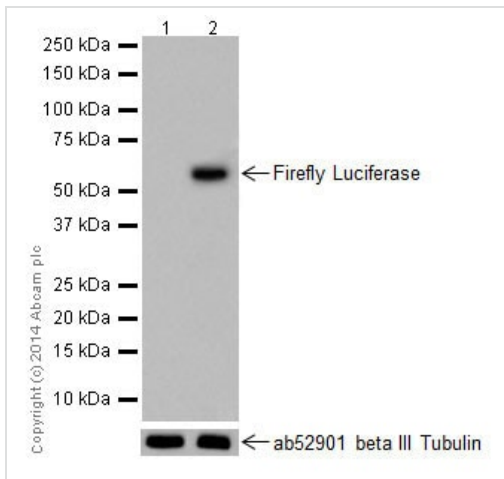
Immunofluorescent analysis of 4% paraformaldehyde-fixed, 0.1% Triton X-100 permeabilized HEK293T (Human epithelial cells from embryonic kidney) cells transfected with Empty vector or Firefly Luciferase, labeling Firefly Luciferase with ab185924 at 1/500 dilution, followed by Goat anti-rabbit IgG (Alexa Fluor® 488) (**ab150077**) secondary antibody at 1/500 dilution (green). Nuclear staining on HEK293T cells transfected with Firefly Luciferase is observed. The nuclear counter stain is DAPI (blue). Tubulin is detected with **ab7291** (anti-Tubulin mouse mAb) at 1/1000 dilution and **ab150120** (AlexaFluor®594 Goat anti-Mouse secondary) at 1/500 dilution (red).

The negative controls are as follows;

- ve control 1: ab185924 at 1/500 dilution followed by **ab150120** (AlexaFluor®594 Goat anti-Mouse secondary) at 1/500 dilution.
- ve control 2: **ab7291** (anti-Tubulin mouse mAb) at 1/1000 dilution followed by **ab150077** (Alexa Fluor®488 Goat Anti-Rabbit IgG H&L) at 1/500 dilution.



Flow Cytometry - Anti-Firefly Luciferase antibody
[EPR17790] (ab185924)



Western blot - Anti-Firefly Luciferase antibody
[EPR17790] (ab185924)

Flow Cytometry analysis of 293T (Human epithelial cell line from embryonic kidney) cells transfected with GFP tagged Firefly Luciferase labeled with purified ab185924 at 1/70 dilution (10µg/ml, Right panel). Cells were fixed with 4% paraformaldehyde and permeabilised with 90% methanol. A Goat anti rabbit IgG (Alexa Fluor® 647)(1/2000 dilution) was used as the secondary antibody. Rabbit monoclonal IgG (Left panel) was used as the isotype control.

All lanes : Anti-Firefly Luciferase antibody [EPR17790]
(ab185924) at 1/20000 dilution

Lane 1 : Empty vector (vector control) transfected HEK293 (Human embryonic kidney) whole cell lysate

Lane 2 : Firefly Luciferase transfected HEK293 (Human embryonic kidney) whole cell lysate

Lysates/proteins at 10 µg per lane.

Secondary

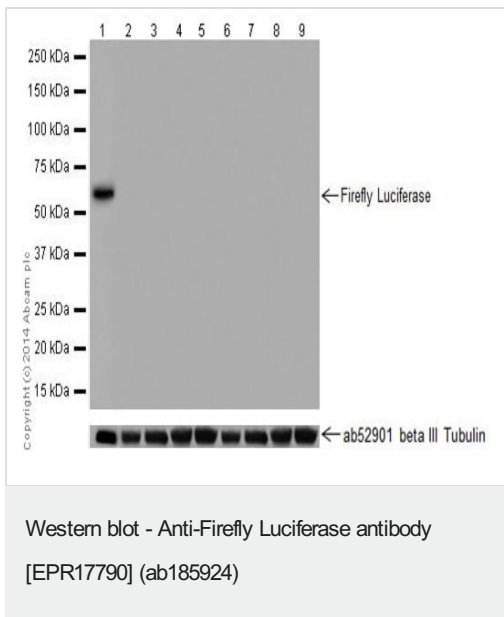
All lanes : Goat Anti-Rabbit IgG, (H+L), Peroxidase conjugate at 1/1000 dilution

Predicted band size: 61 kDa

Observed band size: 61 kDa

Exposure time: 3 minutes

Blocking/Dilution buffer: 5% NFD/MTBST.



All lanes : Anti-Firefly Luciferase antibody [EPR17790] (ab185924) at 1/1000 dilution

Lane 1 : Firefly Luciferase transfected HEK293 (human embryonic kidney) whole cell lysate at 10 µg

Lane 2 : HeLa (Human epithelial cells from cervix adenocarcinoma) whole cell lysate at 20 µg

Lane 3 : MCF7 (Human breast adenocarcinoma cell line) whole cell lysate at 20 µg

Lane 4 : Jurkat (Human T cell leukemia cells from peripheral blood) whole cell lysate at 20 µg

Lane 5 : SH-SY5Y (Human neuroblastoma from bone marrow cells) whole cell lysate at 20 µg

Lane 6 : Human fetal brain lysate at 10 µg

Lane 7 : Human fetal heart lysate at 10 µg

Lane 8 : Human fetal kidney lysate at 10 µg

Lane 9 : Human fetal spleen lysate at 10 µg

Secondary

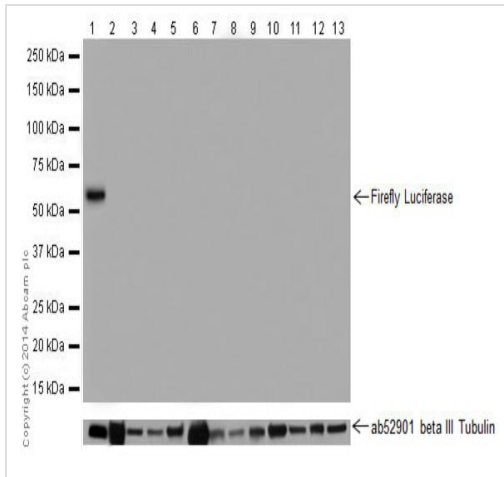
All lanes : Anti-Rabbit IgG (HRP), specific to the non-reduced form of IgG at 1/1000 dilution

Predicted band size: 61 kDa

Observed band size: 61 kDa

Exposure time: 3 minutes

Blocking/Dilution buffer: 5% NFDm/TBST.



Western blot - Anti-Firefly Luciferase antibody [EPR17790] (ab185924)

All lanes : Anti-Firefly Luciferase antibody [EPR17790] (ab185924) at 1/1000 dilution

Lane 1 : Firefly Luciferase transfected HEK293 (Human embryonic kidney) whole cell lysate

Lane 2 : Mouse brain lysate

Lane 3 : Mouse heart lysate

Lane 4 : Mouse kidney lysate

Lane 5 : Mouse spleen lysate

Lane 6 : Rat brain lysate

Lane 7 : Rat heart lysate

Lane 8 : Rat kidney lysate

Lane 9 : Rat spleen lysate

Lane 10 : C6 (Rat glial tumor cells) whole cell lysate

Lane 11 : RAW 264.7 (Mouse macrophage cells transformed with Abelson murine leukemia virus) whole cell lysate

Lane 12 : PC-12 (Rat adrenal gland pheochromocytoma) whole cell lysate

Lane 13 : NIH/3T3 (Mouse embryo fibroblast cells) whole cell lysate

Lysates/proteins at 10 µg per lane.

Secondary

All lanes : Goat Anti-Rabbit IgG, (H+L), Peroxidase conjugate at 1/1000 dilution

Predicted band size: 61 kDa

Observed band size: 61 kDa

Exposure time: 3 minutes

Blocking/Dilution buffer: 5% NFDN/TBST.

Why choose a recombinant antibody?



Research with confidence
Consistent and reproducible results



Long-term and scalable supply
Recombinant technology



Success from the first experiment
Confirmed specificity



Ethical standards compliant
Animal-free production

Anti-Firefly Luciferase antibody [EPR17790]
(ab185924)

Please note: All products are "FOR RESEARCH USE ONLY. NOT FOR USE IN DIAGNOSTIC PROCEDURES"

Our Abpromise to you: Quality guaranteed and expert technical support

- Replacement or refund for products not performing as stated on the datasheet
- Valid for 12 months from date of delivery
- Response to your inquiry within 24 hours
- We provide support in Chinese, English, French, German, Japanese and Spanish
- Extensive multi-media technical resources to help you
- We investigate all quality concerns to ensure our products perform to the highest standards

If the product does not perform as described on this datasheet, we will offer a refund or replacement. For full details of the Abpromise, please visit <https://www.abcam.co.jp/abpromise> or contact our technical team.

Terms and conditions

- Guarantee only valid for products bought direct from Abcam or one of our authorized distributors