




Anti-FIP200 antibody ab176816

6 References [画像数 3](#)

製品の概要

製品名	Anti-FIP200 antibody
製品の詳細	Rabbit polyclonal to FIP200
由来種	Rabbit
アプリケーション	適用あり: IP, WB
種交差性	交差種: Mouse, Human 交差が予測される動物種: Rat, Horse, Guinea pig, Cow, Dog, Pig, Chimpanzee, Rhesus monkey, Gorilla, Common marmoset, Orangutan 
免疫原	Synthetic peptide within Human FIP200 aa 1544-1594 (C terminal). The exact sequence is proprietary. NP_055596.3 Sequence: EGASGAS RRPWVLGKVM EKEYCQAKKA QNRFKVPLGT KFYRVKAVSW NKKV Database link: Q8TDY2 <div>  Run BLAST with  Run BLAST with </div>
ポジティブ・コントロール	HeLa, 293T and TCMK1 whole cell lysates.
特記事項	<p>The Life Science industry has been in the grips of a reproducibility crisis for a number of years. Abcam is leading the way in addressing this with our range of recombinant monoclonal antibodies and knockout edited cell lines for gold-standard validation. Please check that this product meets your needs before purchasing.</p> <p>If you have any questions, special requirements or concerns, please send us an inquiry and/or contact our Support team ahead of purchase. Recommended alternatives for this product can be found below, along with publications, customer reviews and Q&As</p>

製品の特性

製品の状態	Liquid
保存方法	Shipped at 4°C. Store at +4°C short term (1-2 weeks). Upon delivery aliquot. Store at -20°C long term. Avoid freeze / thaw cycle.
バッファー	pH: 6.8 Preservative: 0.09% Sodium azide

	Constituents: 99% Tris buffered saline, 0.1% BSA
精製度	Immunogen affinity purified
特記事項 (精製)	ab176816 was affinity purified using an epitope specific to FIP200 immobilized on solid support.
ポリ/モノ	ポリクローナル
アイソタイプ	IgG

アプリケーション

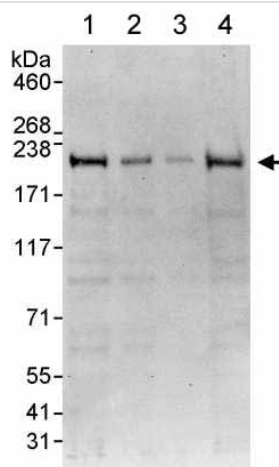
The Abpromise guarantee **Abpromise保証は、**次のテスト済みアプリケーションにおけるab176816の使用に適用されます
アプリケーションノートには、推奨の開始希釈率がありますが、適切な希釈率につきましてはご検討ください。

アプリケーション	Abreviews	特記事項
IP		Use at 2-5 µg/mg of lysate.
WB		1/2000 - 1/10000. Predicted molecular weight: 183 kDa.

ターゲット情報

機能	Implicated in the regulation of RB1 expression. Functions as a DNA-binding transcription factor. Is a potent regulator of the RB1 pathway and a mediator that plays a crucial role in muscular differentiation. Expression is, thus, a prerequisite for myogenic differentiation. Involved in autophagy. Required for autophagosome formation (By similarity). Inhibits PTK2/FAK1 and PTK2B/PYK2 activity and activation of downstream signaling pathways.
組織特異性	Expression levels correlated closely with those of RB1 in cancer cell lines as well as in various normal human tissues. Abundantly expressed in human musculoskeletal and cultured osteosarcoma cells.
発生段階	Expression was difficult to detect in immature proliferating chondroblasts or myogenic cells in embryos, but became obvious and prominent concomitantly with the maturation of osteocytes, chondrocytes, and skeletal muscle cells. Expression in these musculoskeletal cells increased with RB1 expression, which is linked to the terminal differentiation of many tissues and cells. The introduction of the wild-type protein decreased the formation of macroscopic colonies in a cell growth assay.
細胞内局在	Nucleus. Cytoplasm > cytosol. Preautophagosomal structure. Under starvation conditions, is localized to punctate structures primarily representing the isolation membrane that sequesters a portion of the cytoplasm resulting in the formation of an autophagosome.

画像



Western blot - Anti-FIP200 antibody (ab176816)

All lanes : Anti-FIP200 antibody (ab176816) at 0.04 µg/ml

Lane 1 : HeLa whole cell lysates at 50 µg

Lane 2 : HeLa whole cell lysates at 15 µg

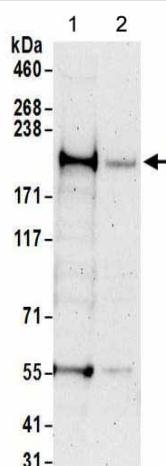
Lane 3 : HeLa whole cell lysates at 5 µg

Lane 4 : 293T whole cell lysates at 50 µg

Developed using the ECL technique.

Predicted band size: 183 kDa

Exposure time: 30 seconds



Western blot - Anti-FIP200 antibody (ab176816)

All lanes : Anti-FIP200 antibody (ab176816) at 0.2 µg/ml

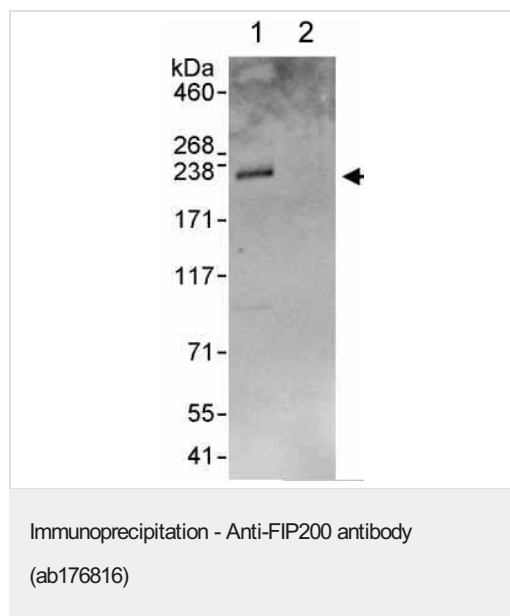
Lane 1 : TCMK1 whole cell lysates at 50 µg

Lane 2 : TCMK1 whole cell lysates at 15 µg

Developed using the ECL technique.

Predicted band size: 183 kDa

Exposure time: 3 minutes



ab176816 at 0.1 µg/ml detecting FIP200 in HeLa whole cell lysate by WB following IP.

Lane 1: ab176816 at 3µg/mg of lysate

Lane 2: Control IgG.

In each case, 1 mg of lysate was used for IP and 20% of the IP was loaded.

Detection: Chemiluminescence with an exposure time of 30 seconds.

Please note: All products are "FOR RESEARCH USE ONLY. NOT FOR USE IN DIAGNOSTIC PROCEDURES"

Our Abpromise to you: Quality guaranteed and expert technical support

- Replacement or refund for products not performing as stated on the datasheet
- Valid for 12 months from date of delivery
- Response to your inquiry within 24 hours
- We provide support in Chinese, English, French, German, Japanese and Spanish
- Extensive multi-media technical resources to help you
- We investigate all quality concerns to ensure our products perform to the highest standards

If the product does not perform as described on this datasheet, we will offer a refund or replacement. For full details of the Abpromise, please visit <https://www.abcam.co.jp/abpromise> or contact our technical team.

Terms and conditions

- Guarantee only valid for products bought direct from Abcam or one of our authorized distributors