

# Anti-Fibulin 5 antibody [EPR4506] - BSA and Azide free ab247857

リコンビナント **RabMAb**

画像数 4

### 製品の概要

製品名	Anti-Fibulin 5 antibody [EPR4506] - BSA and Azide free
製品の詳細	Rabbit monoclonal [EPR4506] to Fibulin 5 - BSA and Azide free
由来種	Rabbit
アプリケーション	<b>適用あり:</b> WB
種交差性	<b>交差種:</b> Mouse, Human
免疫原	Recombinant fragment corresponding to Human Fibulin 5 aa 250 to the C-terminus (internal sequence).
特記事項	<p>ab247857 is the carrier-free version of <a href="#">ab109428</a>.</p> <p>Our <b>carrier-free</b> antibodies are typically supplied in a PBS-only formulation, purified and free of BSA, sodium azide and glycerol. The carrier-free buffer and high concentration allow for increased conjugation efficiency.</p> <p>This conjugation-ready format is designed for use with fluorochromes, metal isotopes, oligonucleotides, and enzymes, which makes them ideal for antibody labelling, functional and cell-based assays, flow-based assays (e.g. mass cytometry) and Multiplex Imaging applications.</p> <p>Use our <b>conjugation kits</b> for antibody conjugates that are ready-to-use in as little as 20 minutes with &lt;1 minute hands-on-time and 100% antibody recovery: available for fluorescent dyes, HRP, biotin and gold.</p> <p>This product is compatible with the Maxpar<sup>®</sup> Antibody Labeling Kit from Fluidigm, without the need for antibody preparation. Maxpar<sup>®</sup> is a trademark of Fluidigm Canada Inc.</p> <p>This product is a recombinant monoclonal antibody, which offers several advantages including:</p> <ul style="list-style-type: none"> <li>- High batch-to-batch consistency and reproducibility</li> <li>- Improved sensitivity and specificity</li> <li>- Long-term security of supply</li> <li>- Animal-free production</li> </ul> <p>For more information <a href="#">see here</a>.</p> <p>Our RabMAb<sup>®</sup> technology is a patented hybridoma-based technology for making rabbit monoclonal antibodies. For details on our patents, please refer to <a href="#">RabMAb<sup>®</sup> patents</a>.</p> <p>Rat: We have preliminary internal testing data to indicate this antibody may not react with this</p>

species. Please contact us for more information.

## 製品の特性

製品の状態	Liquid
保存方法	Shipped at 4°C. Store at +4°C. Do Not Freeze.
バッファー	pH: 7.2 Constituent: PBS
キャリア・フリー	はい
精製度	Protein A purified
ポリ/モノ	モノクローナル
クローン名	EPR4506
アイソタイプ	IgG

## アプリケーション

**The Abpromise guarantee**      **Abpromise保証は、**次のテスト済みアプリケーションにおけるab247857の使用に適用されます  
アプリケーションノートには、推奨の開始希釈率がありますが、適切な希釈率につきましてはご検討ください。

アプリケーション	Abreviews	特記事項
WB		Use at an assay dependent concentration. Predicted molecular weight: 50 kDa.

## ターゲット情報

機能	Promotes adhesion of endothelial cells through interaction of integrins and the RGD motif. Could be a vascular ligand for integrin receptors and may play a role in vascular development and remodeling.
組織特異性	Expressed predominantly in heart, ovary, and colon but also in kidney, pancreas, testis, lung and placenta. Not detectable in brain, liver, thymus, prostate, or peripheral blood leukocytes.
関連疾患	<p>Defects in FBLN5 are a cause of autosomal dominant cutis laxa (ADCL) [MIM:123700]. Hereditary cutis laxa refers to a heterogeneous group of connective tissue disorders characterized by cutaneous abnormalities and variable systemic manifestations. The most constant clinical feature is loose skin, sagging over the face and trunk. Hereditary cutis laxa is inherited in both autosomal dominant and autosomal recessive modes. Autosomal dominant cutis laxa is a relatively benign inherited and acquired connective tissue disorder.</p> <p>Defects in FBLN5 are a cause of cutis laxa autosomal recessive type 1 (ARCL1) [MIM:219100]. Hereditary cutis laxa refers to a heterogeneous group of connective tissue disorders characterized by cutaneous abnormalities and variable systemic manifestations. The most constant clinical feature is loose skin, sagging over the face and trunk. Hereditary cutis laxa is inherited in both autosomal dominant and autosomal recessive modes. ARCL1 shows the most severe phenotype and has the poorest prognosis. In addition to the skin, internal organs enriched in elastic fibers, such as the lung and arteries, are affected.</p> <p>Defects in FBLN5 are the cause of age-related macular degeneration type 3 (ARMD3)</p>

[MIM:608895]. ARMD is a multifactorial disease and the most common cause of irreversible vision loss in the developed world. In most patients, the disease is manifest as ophthalmoscopically visible yellowish accumulations of protein and lipid (known as drusen) that lie beneath the retinal pigment epithelium and within an elastin-containing structure known as Bruch membrane.

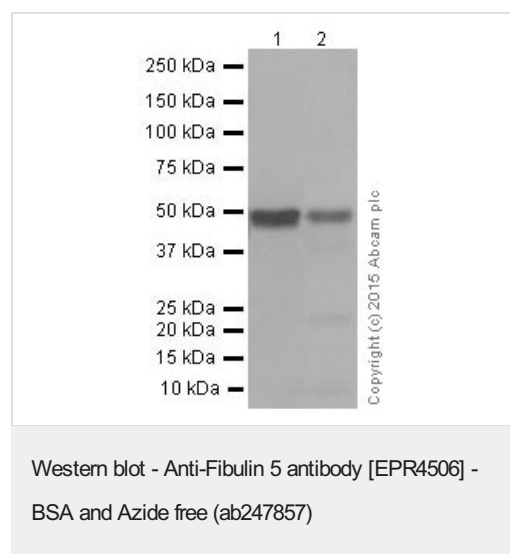
#### 配列類似性

Belongs to the fibulin family.  
Contains 6 EGF-like domains.

#### 細胞内局在

Secreted.

#### 画像



**All lanes :** Anti-Fibulin 5 antibody [EPR4506] ([ab109428](#)) at 1/1000 dilution (purified)

**Lane 1 :** Human fetal kidney tissue lysate

**Lane 2 :** Human fetal spleen tissue lysate

Lysates/proteins at 20 µg per lane.

#### Secondary

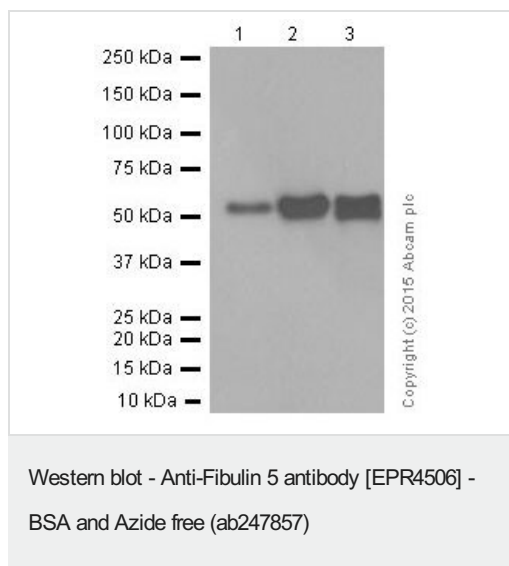
**All lanes :** HRP-conjugated anti-rabbit IgG, specific to the non-reduced form of IgG at 1/5000 dilution

**Predicted band size:** 50 kDa

**Observed band size:** 50-60 kDa

This data was developed using [ab109428](#), the same antibody clone in a different buffer formulation.

**Blocking and dilution buffer:** 5% NFDM/TBST.



**All lanes :** Anti-Fibulin 5 antibody [EPR4506] ([ab109428](#)) at 1/1000 dilution (purified)

**Lane 1 :** Mouse brain tissue lysate

**Lane 2 :** Mouse heart tissue lysate

**Lane 3 :** Mouse kidney tissue lysate

Lysates/proteins at 20 µg per lane.

#### Secondary

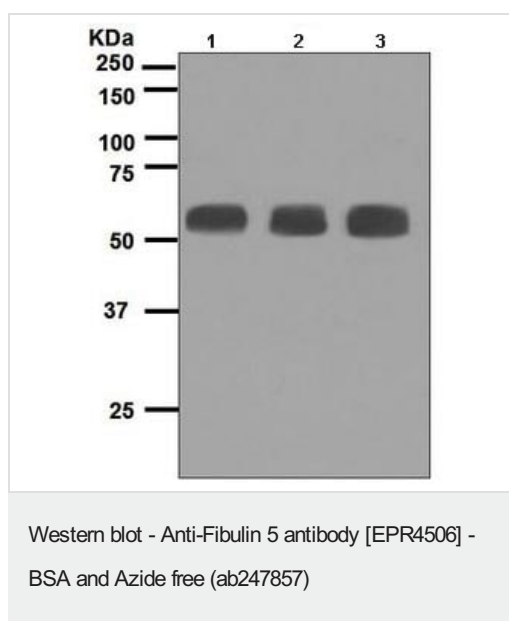
**All lanes :** Goat Anti-Rabbit IgG H&L (HRP) ([ab97051](#)) at 1/10000 dilution

**Predicted band size:** 50 kDa

**Observed band size:** 50-60 kDa

This data was developed using [ab109428](#), the same antibody clone in a different buffer formulation.

**Blocking and dilution buffer:** 5% NFDm/TBST.



**All lanes :** Anti-Fibulin 5 antibody [EPR4506] ([ab109428](#)) at 1/1000 dilution (unpurified)

**Lane 1 :** Fetal lung lysate

**Lane 2 :** Fetal kidney lysate

**Lane 3 :** Human testis lysate

Lysates/proteins at 10 µg per lane.

**Predicted band size:** 50 kDa

This data was developed using [ab109428](#), the same antibody clone in a different buffer formulation.

### Why choose a recombinant antibody?



**Research with confidence**  
Consistent and reproducible results



**Long-term and scalable supply**  
Recombinant technology



**Success from the first experiment**  
Confirmed specificity



**Ethical standards compliant**  
Animal-free production

Anti-Fibulin 5 antibody [EPR4506] - BSA and Azide free (ab247857)

**Please note:** All products are "FOR RESEARCH USE ONLY. NOT FOR USE IN DIAGNOSTIC PROCEDURES"

### Our Abpromise to you: Quality guaranteed and expert technical support

---

- Replacement or refund for products not performing as stated on the datasheet
- Valid for 12 months from date of delivery
- Response to your inquiry within 24 hours
- We provide support in Chinese, English, French, German, Japanese and Spanish
- Extensive multi-media technical resources to help you
- We investigate all quality concerns to ensure our products perform to the highest standards

If the product does not perform as described on this datasheet, we will offer a refund or replacement. For full details of the Abpromise, please visit <https://www.abcam.co.jp/abpromise> or contact our technical team.

### Terms and conditions

---

- Guarantee only valid for products bought direct from Abcam or one of our authorized distributors