

### Anti-Fibulin-4 antibody [EPR684(2)] ab125073

リコンビナント **RabMAb**

★★★★★ **2 Abreviews** **8 References** 画像数 5

#### 製品の概要

製品名	Anti-Fibulin-4 antibody [EPR684(2)]
製品の詳細	Rabbit monoclonal [EPR684(2)] to Fibulin-4
由来種	Rabbit
アプリケーション	<b>適用あり:</b> WB, IHC-P <b>適用なし:</b> Flow Cyt, ICC/IF or IP
種交差性	<b>交差種:</b> Mouse, Human
免疫原	Synthetic peptide within Human Fibulin-4 aa 400-500. The exact sequence is proprietary.
ポジティブ・コントロール	JAR and SW480 cell lysates, Human fetal lung lysate, Human breast carcinoma and muscle tissues.
特記事項	<p>This product is a recombinant monoclonal antibody, which offers several advantages including:</p> <ul style="list-style-type: none"> <li>- High batch-to-batch consistency and reproducibility</li> <li>- Improved sensitivity and specificity</li> <li>- Long-term security of supply</li> <li>- Animal-free production</li> </ul> <p>For more information <a href="#">see here</a>.</p> <p>Our RabMAb<sup>®</sup> technology is a patented hybridoma-based technology for making rabbit monoclonal antibodies. For details on our patents, please refer to <a href="#">RabMAb<sup>®</sup> patents</a>.</p> <p>Mouse, Rat: We have preliminary internal testing data to indicate this antibody may not react with these species. Please contact us for more information.</p>

#### 製品の特性

製品の状態	Liquid
保存方法	Shipped at 4°C. Store at -20°C. Stable for 12 months at -20°C.
バッファー	pH: 7.20 Constituents: 0.35% Sodium citrate, 0.17% Sodium chloride, 0.03% EDTA, 59% PBS, 40% Glycerol (glycerin, glycerine), 0.05% BSA
精製度	Protein A purified
ポリ/モノ	モノクローナル

クローン名                      EPR684(2)

アイソタイプ                    IgG

#### アプリケーション

**The Abpromise guarantee**           **Abpromise保証は、** 次のテスト済みアプリケーションにおけるab125073の使用に適用されます  
アプリケーションノートには、推奨の開始希釈率がありますが、適切な希釈率につきましてはご検討ください。

アプリケーション	Abreviews	特記事項
WB		1/1000 - 1/10000. Predicted molecular weight: 49 kDa.
IHC-P	★★★★★ (2)	1/250 - 1/500. Perform heat mediated antigen retrieval with citrate buffer pH 6 before commencing with IHC staining protocol.

**追加情報**                               Is unsuitable for Flow Cyt, ICC/IF or IP.

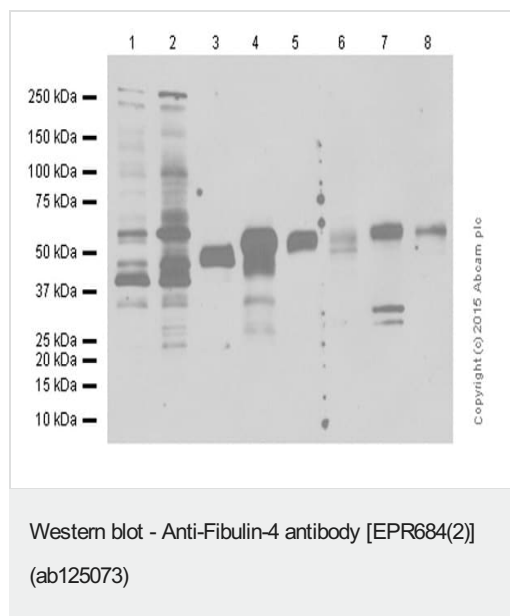
#### ターゲット情報

**関連疾患**                               Defects in EFEMP2 are a cause of cutis laxa autosomal recessive type 1 (ARCL1) [MIM:219100]. Hereditary cutis laxa refers to a heterogeneous group of connective tissue disorders characterized by cutaneous abnormalities and variable systemic manifestations. The most constant clinical feature is loose skin, sagging over the face and trunk. Hereditary cutis laxa is inherited in both autosomal dominant and autosomal recessive modes. ARCL1 shows the most severe phenotype and has the poorest prognosis. In addition to the skin, internal organs enriched in elastic fibers, such as the lung and arteries, are affected.

**配列類似性**                               Belongs to the fibulin family.  
Contains 6 EGF-like domains.

**細胞内局在**                               Secreted.

#### 画像



**All lanes :** Anti-Fibulin-4 antibody [EPR684(2)] (ab125073) at 1/1000 dilution

**Lane 1 :** HEK-293T (human embryonic kidney) whole cell lysates

**Lane 2 :** HepG2 (human hepatocellular carcinoma) whole cell lysates

**Lane 3 :** Human fetal lung tissue lysates

**Lane 4 :** Human colon cancer tissue lysates

**Lane 5 :** Human placenta tissue lysates

**Lane 6 :** Mouse placenta tissue lysates

**Lane 7 :** Mouse lung tissue lysates

**Lane 8 :** NIH/3T3 (mouse embryo) whole cell lysates

Lysates/proteins at 20 µg per lane.

### Secondary

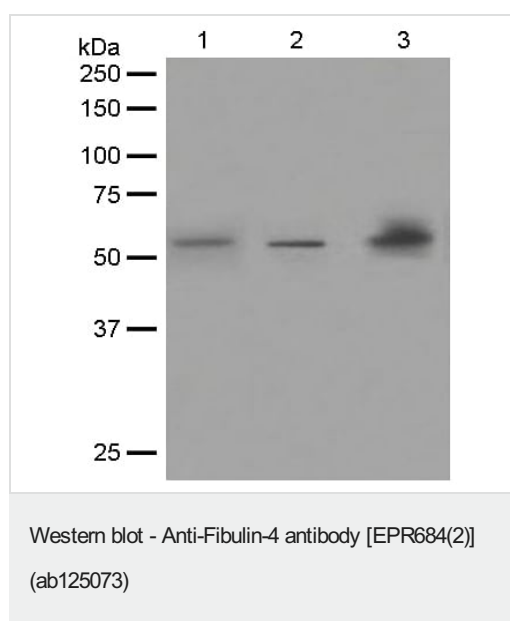
**All lanes :** Goat Anti-Rabbit IgG Peroxidase Conjugate, specific to the non-reduced form of IgG at 1/1000 dilution

**Predicted band size:** 49 kDa

**Observed band size:** 55 kDa

**Exposure time:** 3 minutes

Blocking and diluting buffer: 5% NFDM/TBST



**All lanes :** Anti-Fibulin-4 antibody [EPR684(2)] (ab125073) at 1/1000 dilution

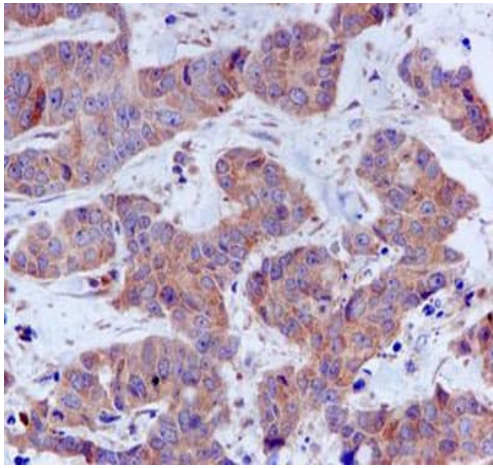
**Lane 1 :** JAR cell lysate

**Lane 2 :** SW480 cell lysate

**Lane 3 :** Human fetal lung tissue lysate

Lysates/proteins at 10 µg per lane.

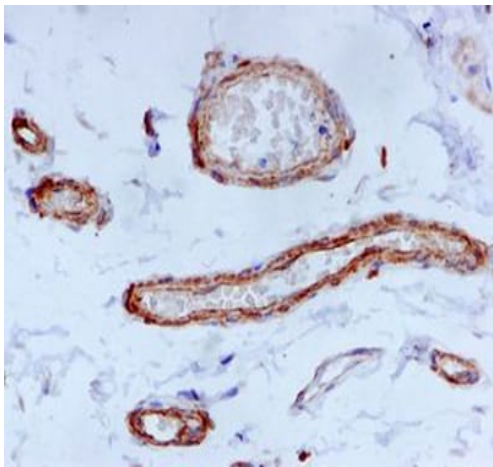
**Predicted band size:** 49 kDa



Immunohistochemistry (Formalin/PFA-fixed paraffin-embedded sections) - Anti-Fibulin-4 antibody [EPR684(2)] (ab125073)

ab125073, at 1/250, staining Fibulin-4 in paraffin-embedded Human breast carcinoma tissue by immunohistochemistry.

Perform heat mediated antigen retrieval with citrate buffer pH 6 before commencing with IHC staining protocol.



Immunohistochemistry (Formalin/PFA-fixed paraffin-embedded sections) - Anti-Fibulin-4 antibody [EPR684(2)] (ab125073)

ab125073, at 1/250, staining Fibulin-4 in paraffin-embedded Human muscle tissue by immunohistochemistry.

Perform heat mediated antigen retrieval with citrate buffer pH 6 before commencing with IHC staining protocol.

### Why choose a recombinant antibody?



**Research with confidence**  
Consistent and reproducible results



**Long-term and scalable supply**  
Recombinant technology



**Success from the first experiment**  
Confirmed specificity



**Ethical standards compliant**  
Animal-free production

Anti-Fibulin-4 antibody [EPR684(2)] (ab125073)

**Please note:** All products are "FOR RESEARCH USE ONLY. NOT FOR USE IN DIAGNOSTIC PROCEDURES"

### Our Abpromise to you: Quality guaranteed and expert technical support

---

- Replacement or refund for products not performing as stated on the datasheet
- Valid for 12 months from date of delivery
- Response to your inquiry within 24 hours
- We provide support in Chinese, English, French, German, Japanese and Spanish
- Extensive multi-media technical resources to help you
- We investigate all quality concerns to ensure our products perform to the highest standards

If the product does not perform as described on this datasheet, we will offer a refund or replacement. For full details of the Abpromise, please visit <https://www.abcam.co.jp/abpromise> or contact our technical team.

### Terms and conditions

---

- Guarantee only valid for products bought direct from Abcam or one of our authorized distributors