


# Anti-Fibrillarin antibody [EPR10822(B)] - Nucleolar Marker ab154806

リコンビナント **RabMAb**

★★★★★ **1 Abreviews** **2 References** 画像数 **3**

### 製品の概要

製品名	Anti-Fibrillarin antibody [EPR10822(B)] - Nucleolar Marker
製品の詳細	Rabbit monoclonal [EPR10822(B)] to Fibrillarin - Nucleolar Marker
由来種	Rabbit
アプリケーション	<b>適用あり:</b> WB, ICC/IF <b>適用なし:</b> Flow Cyt, IHC-P or IP
種交差性	<b>交差種:</b> Human <b>交差が予測される動物種:</b> Mouse, Rat 
免疫原	Synthetic peptide within Human Fibrillarin. The exact sequence is proprietary.
ポジティブ・コントロール	HeLa, HepG2, 293T and Molt4 cell lysates; Human colonic carcinoma and prostate tissues; HepG2 cells
特記事項	This product is a recombinant monoclonal antibody, which offers several advantages including: <ul style="list-style-type: none"> <li>- High batch-to-batch consistency and reproducibility</li> <li>- Improved sensitivity and specificity</li> <li>- Long-term security of supply</li> <li>- Animal-free production</li> </ul> For more information <a href="#">see here</a> . Our RabMAb <sup>®</sup> technology is a patented hybridoma-based technology for making rabbit monoclonal antibodies. For details on our patents, please refer to <a href="#">RabMAb<sup>®</sup> patents</a> .

### 製品の特性

製品の状態	Liquid
保存方法	Shipped at 4°C. Store at -20°C.
バッファー	pH: 7.2 Preservative: 0.01% Sodium azide Constituents: 9% PBS, 40% Glycerol (glycerin, glycerine), 0.05% BSA, 50% Tissue culture supernatant
精製度	Protein A purified

ポリ/モノ	モノクローナル
クローン名	EPR10822(B)
アイソタイプ	IgG

## アプリケーション

**The Abpromise guarantee** **Abpromise保証は、**次のテスト済みアプリケーションにおけるab154806の使用に適用されます  
アプリケーションノートには、推奨の開始希釈率がありますが、適切な希釈率につきましてはご検討ください。

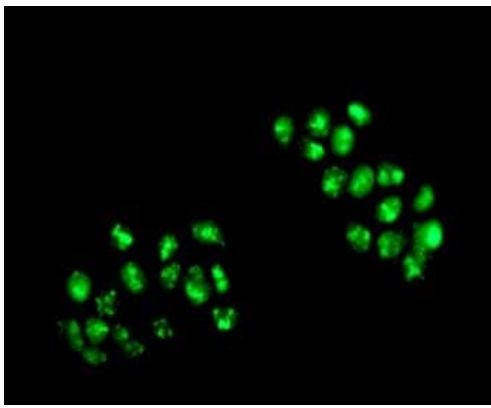
アプリケーション	Abreviews	特記事項
WB	★★★★★ (1)	1/1000 - 1/10000. Predicted molecular weight: 33 kDa.
ICC/IF		1/250 - 1/500.

**追加情報** Is unsuitable for Flow Cyt, IHC-P or IP.

## ターゲット情報

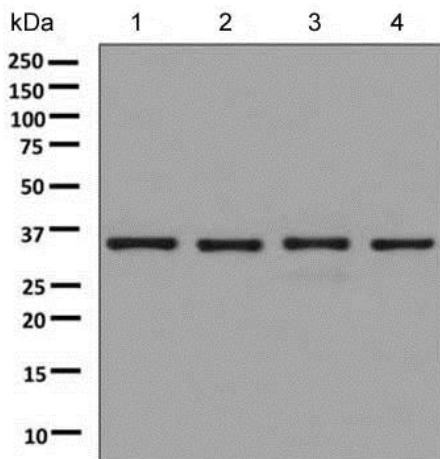
<b>機能</b>	S-adenosyl-L-methionine-dependent methyltransferase that has the ability to methylate both RNAs and proteins. Involved in pre-rRNA processing by catalyzing the site-specific 2'-hydroxyl methylation of ribose moieties in pre-ribosomal RNA. Site specificity is provided by a guide RNA that base pairs with the substrate. Methylation occurs at a characteristic distance from the sequence involved in base pairing with the guide RNA. Also acts as a protein methyltransferase by mediating methylation of 'Gln-105' of histone H2A (H2AQ104me), a modification that impairs binding of the FACT complex and is specifically present at 35S ribosomal DNA locus (PubMed:24352239).
<b>配列類似性</b>	Belongs to the methyltransferase superfamily. Fibrillarin family.
<b>翻訳後修飾</b>	By homology to other fibrillarins, some or all of the N-terminal domain arginines are modified to asymmetric dimethylarginine (DMA).
<b>細胞内局在</b>	Nucleus, nucleolus. Fibrillar region of the nucleolus.

## 画像



Immunocytochemistry/ Immunofluorescence - Anti-Fibrillarin antibody [EPR10822(B)] - Nucleolar Marker (ab154806)

Immunofluorescence analysis of HepG2 cells labeling Fibrillarin with ab154806 at 1/250 dilution.



Western blot - Anti-Fibrillarin antibody [EPR10822(B)] - Nucleolar Marker (ab154806)

**All lanes :** Anti-Fibrillarin antibody [EPR10822(B)] - Nucleolar Marker (ab154806) at 1/1000 dilution

**Lane 1 :** HeLa lysate  
**Lane 2 :** HepG2 lysate  
**Lane 3 :** 293T lysate  
**Lane 4 :** Molt4 lysate

Lysates/proteins at 10 µg per lane.

**Predicted band size:** 33 kDa

Why choose a recombinant antibody?



**Research with confidence**  
 Consistent and reproducible results



**Long-term and scalable supply**  
 Recombinant technology



**Success from the first experiment**  
 Confirmed specificity



**Ethical standards compliant**  
 Animal-free production

Anti-Fibrillarin antibody [EPR10822(B)] - Nucleolar Marker (ab154806)

**Please note:** All products are "FOR RESEARCH USE ONLY. NOT FOR USE IN DIAGNOSTIC PROCEDURES"

### **Our Abpromise to you: Quality guaranteed and expert technical support**

---

- Replacement or refund for products not performing as stated on the datasheet
- Valid for 12 months from date of delivery
- Response to your inquiry within 24 hours
  
- We provide support in Chinese, English, French, German, Japanese and Spanish
- Extensive multi-media technical resources to help you
- We investigate all quality concerns to ensure our products perform to the highest standards

If the product does not perform as described on this datasheet, we will offer a refund or replacement. For full details of the Abpromise, please visit <https://www.abcam.co.jp/abpromise> or contact our technical team.

### **Terms and conditions**

---

- Guarantee only valid for products bought direct from Abcam or one of our authorized distributors