

### Anti-Fibrillarin antibody [4A4] ab218846

★★★★★ [2 Abreviews](#) [1 References](#) [画像数 3](#)

#### 製品の概要

製品名	Anti-Fibrillarin antibody [4A4]
製品の詳細	Mouse monoclonal [4A4] to Fibrillarin
由来種	Mouse
アプリケーション	<b>適用あり:</b> WB, ICC/IF
種交差性	<b>交差種:</b> Mouse, Rat, Human
免疫原	Recombinant full length protein corresponding to Human Fibrillarin aa 1 to the C-terminus. (Purified from E.coli). Database link: <a href="#">P22087</a>

 [Run BLAST with](#)

 [Run BLAST with](#)

**ポジティブ・コントロール** WB: NIH/3T3, HEK-293, HeLa and SH-SY5Y cell lysates. ICC/IF: HEK-293, C6 and HeLa cells.

**特記事項** The Life Science industry has been in the grips of a reproducibility crisis for a number of years. Abcam is leading the way in addressing this with our range of recombinant monoclonal antibodies and knockout edited cell lines for gold-standard validation. Please check that this product meets your needs before purchasing.

If you have any questions, special requirements or concerns, please send us an inquiry and/or contact our Support team ahead of purchase. Recommended alternatives for this product can be found below, along with publications, customer reviews and Q&As

#### 製品の特性

製品の状態	Liquid
保存方法	Shipped at 4°C. Store at +4°C short term (1-2 weeks). Upon delivery aliquot. Store at -20°C long term. Avoid freeze / thaw cycle.
バッファー	Preservative: 0.03% Sodium azide Constituents: PBS, 50% Glycerol
精製度	Protein G purified
ポリ/モノ	モノクローナル
クローン名	4A4
アイソタイプ	IgG1

## アプリケーション

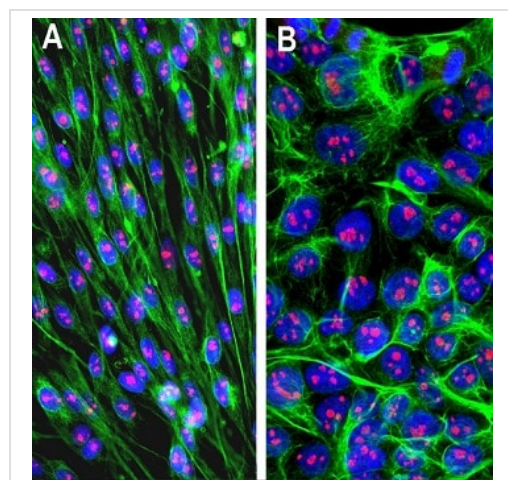
**The Abpromise guarantee** **Abpromise保証は、次のテスト済みアプリケーションにおけるab218846の使用に適用されず**  
アプリケーションノートには、推奨の開始希釈率がありますが、適切な希釈率につきましてはご検討ください。

アプリケーション	Abreviews	特記事項
WB		1/2000 - 1/5000. Predicted molecular weight: 33 kDa.
ICC/IF		1/1000 - 1/2000.

## ターゲット情報

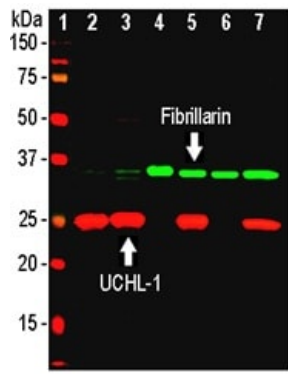
<b>機能</b>	S-adenosyl-L-methionine-dependent methyltransferase that has the ability to methylate both RNAs and proteins. Involved in pre-rRNA processing by catalyzing the site-specific 2'-hydroxyl methylation of ribose moieties in pre-ribosomal RNA. Site specificity is provided by a guide RNA that base pairs with the substrate. Methylation occurs at a characteristic distance from the sequence involved in base pairing with the guide RNA. Also acts as a protein methyltransferase by mediating methylation of 'Gln-105' of histone H2A (H2AQ104me), a modification that impairs binding of the FACT complex and is specifically present at 35S ribosomal DNA locus (PubMed:24352239).
<b>配列類似性</b>	Belongs to the methyltransferase superfamily. Fibrillarin family.
<b>翻訳後修飾</b>	By homology to other fibrillarins, some or all of the N-terminal domain arginines are modified to asymmetric dimethylarginine (DMA).
<b>細胞内局在</b>	Nucleus, nucleolus. Fibrillar region of the nucleolus.

## 画像



C6 (rat glial tumor cell line) (Panel A) and HEK-293 (human epithelial cell line from embryonic kidney) (Panel B) cells stained for Fibrillarin (red) using ab218846 at 1/1000 dilution in ICC/IF. Co-stained with chicken pAb to vimentin, at 1/10000 dilution (green). The blue is DAPI staining of nuclear DNA.

Immunocytochemistry/ Immunofluorescence - Anti-Fibrillarin antibody [4A4] (ab218846)



Western blot - Anti-Fibrillarin antibody [4A4] (ab218846)

**All lanes** : Anti-Fibrillarin antibody [4A4] (ab218846) at 1/2000 dilution

**Lane 1** : MW ladder

**Lane 2** : Rat whole brain lysate

**Lane 3** : Mouse whole brain lysate

**Lane 4** : NIH/3T3 (Mouse embryo fibroblast cell line) cell lysate

**Lane 5** : HEK-293 (Human epithelial cell line from embryonic kidney) cell lysate

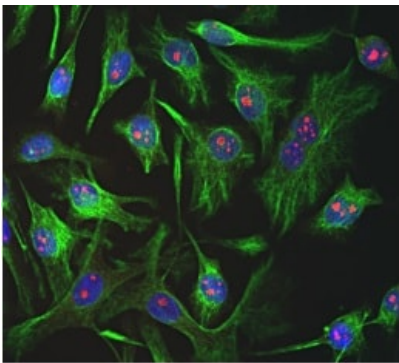
**Lane 6** : HeLa (Human epithelial cell line from cervix adenocarcinoma) cell lysate

**Lane 7** : SH-SY5Y (Human neuroblastoma cell line from bone marrow) cell lysate

**Predicted band size:** 33 kDa

Fibrillarin detection is shown in green.

Also stained with a rabbit antibody to UCHL-1 at 1/3000 dilution (red).



Immunocytochemistry/ Immunofluorescence - Anti-Fibrillarin antibody [4A4] (ab218846)

Immunofluorescent analysis of HeLa (Human epithelial cell line from cervix adenocarcinoma) cells labeling Fibrillarin with ab218846 at 1/1000 dilution (red). The cells were counterstained with a chicken antibody to vimentin at 1/5000 dilution (green) and DAPI to label the nuclei (blue).

**Please note:** All products are "FOR RESEARCH USE ONLY. NOT FOR USE IN DIAGNOSTIC PROCEDURES"

### Our Abpromise to you: Quality guaranteed and expert technical support

- Replacement or refund for products not performing as stated on the datasheet
- Valid for 12 months from date of delivery

- Response to your inquiry within 24 hours
- We provide support in Chinese, English, French, German, Japanese and Spanish
- Extensive multi-media technical resources to help you
- We investigate all quality concerns to ensure our products perform to the highest standards

If the product does not perform as described on this datasheet, we will offer a refund or replacement. For full details of the Abpromise, please visit <https://www.abcam.co.jp/abpromise> or contact our technical team.

### **Terms and conditions**

---

- Guarantee only valid for products bought direct from Abcam or one of our authorized distributors