


Anti-FHL2 antibody ab12327

★★★★★ [3 Abreviews](#) [12 References](#) [画像数 2](#)

製品の概要

製品名	Anti-FHL2 antibody
製品の詳細	Rabbit polyclonal to FHL2
由来種	Rabbit
特異性	Reactivity with mouse FHL2 is unlikely owing to divergence of this ortholog from the peptide used for antibody production. The epitope recognized by ab1237 maps to a region between residues 175 and 225 of human Four and a Half LIM domains 2 using the numbering given in entry NP_963849.1 (GeneID 2274).
アプリケーション	適用あり: WB
種交差性	交差種: Human 交差が予測される動物種: Chimpanzee, Rhesus monkey, Gorilla, Orangutan 
免疫原	Synthetic peptide corresponding to Human FHL2 aa 175-225. Database link: Q14192 (Peptide available as ab119360)
ポジティブ・コントロール	WB: U-2 OS and HeLa cell lysates; HeLa nuclear extract.
特記事項	<p>The Life Science industry has been in the grips of a reproducibility crisis for a number of years. Abcam is leading the way in addressing this with our range of recombinant monoclonal antibodies and knockout edited cell lines for gold-standard validation. Please check that this product meets your needs before purchasing.</p> <p>If you have any questions, special requirements or concerns, please send us an inquiry and/or contact our Support team ahead of purchase. Recommended alternatives for this product can be found below, along with publications, customer reviews and Q&As</p>

製品の特性

製品の状態	Liquid
保存方法	Shipped at 4°C. Upon delivery aliquot and store at -20°C. Avoid freeze / thaw cycles.
バッファー	pH: 7 Preservative: 0.1% Sodium azide Constituents: 0.021% PBS, 1.764% Sodium citrate, 1.815% Tris
精製度	Immunogen affinity purified
特記事項(精製)	This antibody is affinity purified.

ポリクローナル
アイソタイプ IgG

アプリケーション

The Abpromise guarantee **Abpromise保証は、次のテスト済みアプリケーションにおけるab12327の使用に適用されます**
アプリケーションノートには、推奨の開始希釈率がありますが、適切な希釈率につきましてはご確認ください。

アプリケーション	Abreviews	特記事項
WB		1/1000 - 1/10000. Detects a band of approximately 32 kDa (predicted molecular weight: 32 kDa).

ターゲット情報

機能 May function as a molecular transmitter linking various signaling pathways to transcriptional regulation. Negatively regulates the transcriptional repressor E4F1 and may function in cell growth.

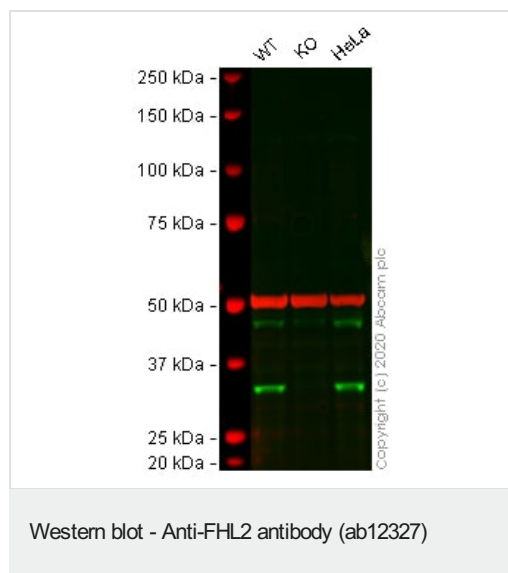
組織特異性 Expressed in skeletal muscle and heart.

配列類似性 Contains 4 LIM zinc-binding domains.

ドメイン The third LIM zinc-binding mediates interaction with E4F1.

細胞内局在 Cytoplasm. Nucleus.

画像



All lanes : Anti-FHL2 antibody (ab12327) at 1/1000 dilution

Lane 1 : Wild-type U-2 OS cell lysate

Lane 2 : FHL2 knockout U-2 OS cell lysate

Lane 3 : HeLa cell lysate

Lysates/proteins at 40 µg per lane.

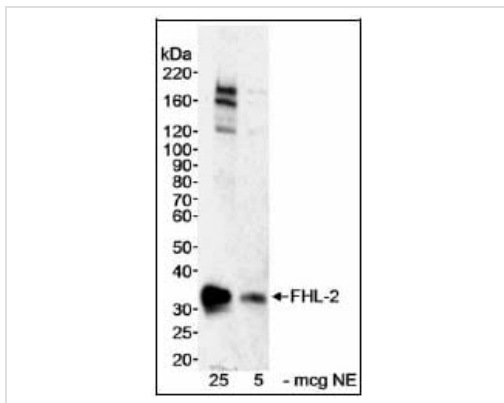
Performed under reducing conditions.

Predicted band size: 32 kDa

Observed band size: 32 kDa

Lanes 1 - 3: Merged signal (red and green). Green - ab12327 observed at 32 kDa. Red - loading control **ab7291** (Mouse anti-Alpha Tubulin [DM1A]) observed at 55kDa.

ab12327 was shown to react with FHL2 in wild-type U-2 OS cells in western blot with loss of signal observed in FHL2 knockout sample. Wild-type and FHL2 knockout U-2 OS cell lysates were subjected to SDS-PAGE. Membranes were blocked in 3% milk in TBS-T (0.1% Tween[®]) before incubation with ab12327 and **ab7291** (Mouse anti-Alpha Tubulin [DM1A]) overnight at 4°C at a 1 in 1000 dilution and a 1 in 20000 dilution respectively. Blots were incubated with Goat anti-Rabbit IgG H&L (IRDye[®] 800CW) preabsorbed (**ab216773**) and Goat anti-Mouse IgG H&L (IRDye[®] 680RD) preabsorbed (**ab216776**) secondary antibodies at 1 in 20000 dilution for 1 hour at room temperature before imaging.



Western blot - Anti-FHL2 antibody (ab12327)

Samples:

Nuclear extract (NE) from HeLa cells. *Antibody:* Affinity purified rabbit anti-FHL2 antibody ab12327 used at 0.3 µg/ml. *Detection:* Chemiluminescence with an exposure time of 5 minutes. Samples: Nuclear extract (NE) from HeLa cells. Antibody: Affinity purified rabbit anti-FHL2 antibody ab12327 used at 0.3 µg/ml. *Detection:* Chemiluminescence with an exposure time of 5 minutes.

Please note: All products are "FOR RESEARCH USE ONLY. NOT FOR USE IN DIAGNOSTIC PROCEDURES"

Our Abpromise to you: Quality guaranteed and expert technical support

- Replacement or refund for products not performing as stated on the datasheet
- Valid for 12 months from date of delivery
- Response to your inquiry within 24 hours
- We provide support in Chinese, English, French, German, Japanese and Spanish
- Extensive multi-media technical resources to help you
- We investigate all quality concerns to ensure our products perform to the highest standards

If the product does not perform as described on this datasheet, we will offer a refund or replacement. For full details of the Abpromise, please visit <https://www.abcam.co.jp/abpromise> or contact our technical team.

Terms and conditions

- Guarantee only valid for products bought direct from Abcam or one of our authorized distributors