

# Anti-FGF22 antibody ab74860

**2 References**   **画像数 3**

### 製品の概要

製品名	Anti-FGF22 antibody
製品の詳細	Rabbit polyclonal to FGF22
由来種	Rabbit
アプリケーション	<b>適用あり:</b> WB, IHC-P, ICC/IF
種交差性	<b>交差種:</b> Human <b>交差が予測される動物種:</b> Mouse, Rat 
免疫原	Synthetic peptide derived from internal sequence of human FGF22.
ポジティブ・コントロール	Human ovary tissue. Extracts from Jurkat cells and HT-29 cells. MCF-7 cells.
特記事項	<p>The Life Science industry has been in the grips of a reproducibility crisis for a number of years. Abcam is leading the way in addressing this with our range of recombinant monoclonal antibodies and knockout edited cell lines for gold-standard validation. Please check that this product meets your needs before purchasing.</p> <p>If you have any questions, special requirements or concerns, please send us an inquiry and/or contact our Support team ahead of purchase. Recommended alternatives for this product can be found below, along with publications, customer reviews and Q&amp;As</p>

### 製品の特性

製品の状態	Liquid
保存方法	Shipped at 4°C. Upon delivery aliquot and store at -20°C. Avoid freeze / thaw cycles.
バッファー	<p>pH: 7.40</p> <p>Preservative: 0.02% Sodium azide</p> <p>Constituents: 50% Glycerol (glycerin, glycerine), 0.87% Sodium chloride, PBS</p>
精製度	Without Mg <sup>2+</sup> and Ca <sup>2+</sup>
ポリ/モノ	ポリクローナル
アイソタイプ	IgG

### アプリケーション

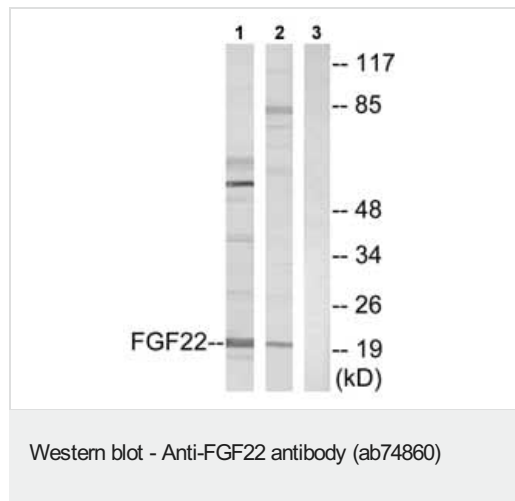
**The Abpromise guarantee**      **Abpromise保証は、**次のテスト済みアプリケーションにおけるab74860の使用に適用されます  
 アプリケーションノートには、推奨の開始希釈率がありますが、適切な希釈率につきましてはご検討ください。

アプリケーション	Abreviews	特記事項
WB		1/500 - 1/1000. Predicted molecular weight: 19 kDa.
IHC-P		1/50 - 1/100.
ICC/IF		1/500 - 1/1000.

## ターゲット情報

機能	May be involved in hair development.
配列類似性	Belongs to the heparin-binding growth factors family.
細胞内局在	Secreted.

## 画像



**All lanes** : Anti-FGF22 antibody (ab74860) at 1/500 dilution

**Lane 1** : Extracts from Jurkat cells

**Lane 2** : Extracts from HT-29 cells

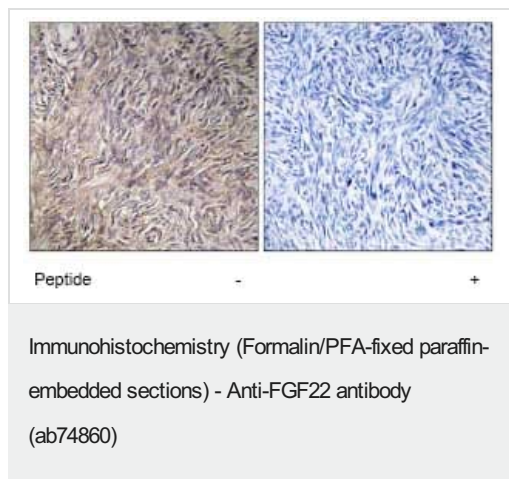
**Lane 3** : Extracts from Jurkat cells with immunising peptide at 5 µg

Lysates/proteins at 5 µg per lane.

**Predicted band size:** 19 kDa

**Observed band size:** 21 kDa

**Additional bands at:** 55 kDa, 85 kDa. We are unsure as to the identity of these extra bands.



Immunohistochemistry analysis of FGF22 in paraffin-embedded human ovary tissue using ab74860, at 1/50 dilution, in the presence (right panel) or absence (left panel) of immunising peptide.



Immunofluorescence analysis of FGF22 in MCF-7 cells using ab74860, at 1/500 dilution, in the presence (right panel) or absence (left panel) of immunising peptide.

**Please note:** All products are "FOR RESEARCH USE ONLY. NOT FOR USE IN DIAGNOSTIC PROCEDURES"

### Our Abpromise to you: Quality guaranteed and expert technical support

- Replacement or refund for products not performing as stated on the datasheet
- Valid for 12 months from date of delivery
- Response to your inquiry within 24 hours
- We provide support in Chinese, English, French, German, Japanese and Spanish
- Extensive multi-media technical resources to help you
- We investigate all quality concerns to ensure our products perform to the highest standards

If the product does not perform as described on this datasheet, we will offer a refund or replacement. For full details of the Abpromise, please visit <https://www.abcam.co.jp/abpromise> or contact our technical team.

### Terms and conditions

- Guarantee only valid for products bought direct from Abcam or one of our authorized distributors