

Anti-FGF21 antibody ab66564

4 References [画像数 2](#)

製品の概要

製品名	Anti-FGF21 antibody
製品の詳細	Rabbit polyclonal to FGF21
由来種	Rabbit
特異性	Expression levels of the target protein vary with sample type and some optimisation may be required (PMID: 27285327). For western blot using cell lines, it may be necessary to collect cell culture supernatant for endogenous FGF21 detection as the target protein is readily secreted (PMID: 24041694; PMID: 26691139).
アプリケーション	適用あり: WB, IHC-P 適用なし: ICC/IF
種交差性	交差種: Human 交差が予測される動物種: Mouse, Rat 
免疫原	Synthetic peptide corresponding to Human FGF21 aa 1-100. (Peptide available as ab66563)
ポジティブ・コントロール	This antibody gave a positive signal on Full length FGF-21 Recombinant Protein (Human) IHC-P: Human liver HCC tissue
特記事項	<p>The Life Science industry has been in the grips of a reproducibility crisis for a number of years. Abcam is leading the way in addressing this with our range of recombinant monoclonal antibodies and knockout edited cell lines for gold-standard validation. Please check that this product meets your needs before purchasing.</p> <p>If you have any questions, special requirements or concerns, please send us an inquiry and/or contact our Support team ahead of purchase. Recommended alternatives for this product can be found below, along with publications, customer reviews and Q&As</p>

製品の特性

製品の状態	Liquid
保存方法	Shipped at 4°C. Store at +4°C short term (1-2 weeks). Upon delivery aliquot. Store at -20°C or -80°C. Avoid freeze / thaw cycle.
バッファー	pH: 7.40 Preservative: 0.02% Sodium azide Constituent: PBS

Batches of this product that have a concentration < 1mg/ml may have BSA added as a stabilising agent. If you would like information about the formulation of a specific lot, please contact our scientific support team who will be happy to help.

精製度	Immunogen affinity purified
ポリ/モノ	ポリクローナル
アイソタイプ	IgG

アプリケーション

The Abpromise guarantee **Abpromise保証は、次のテスト済みアプリケーションにおけるab66564の使用に適用されます**
アプリケーションノートには、推奨の開始希釈率がありますが、適切な希釈率につきましてはご検討ください。

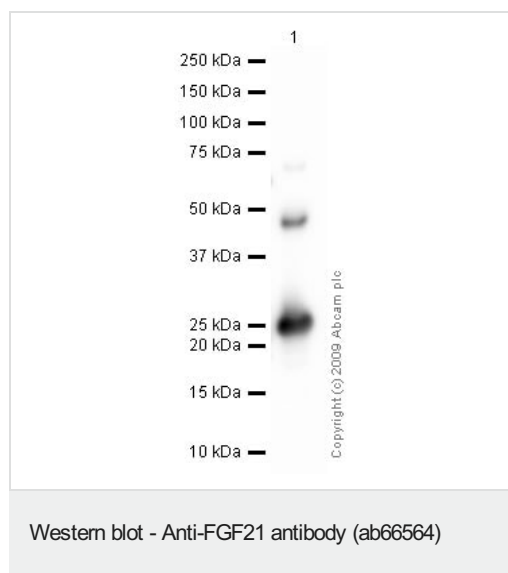
アプリケーション	Abreviews	特記事項
WB		Use a concentration of 1 µg/ml. Detects a band of approximately 24 kDa (predicted molecular weight: 22 kDa).
IHC-P		Use a concentration of 5 µg/ml.

追加情報 Is unsuitable for ICC/IF.

ターゲット情報

機能	Stimulates glucose uptake in differentiated adipocytes via the induction of glucose transporter SLC2A1/GLUT1 expression (but not SLC2A4/GLUT4 expression). Activity requires the presence of KLB.
配列類似性	Belongs to the heparin-binding growth factors family.
細胞内局在	Secreted.

画像



Anti-FGF21 antibody (ab66564) at 1 µg/ml + Recombinant human FGF21 protein (Active) (**ab54141**) at 0.1 µg

Secondary

Goat polyclonal to Rabbit IgG - H&L - Pre-Adsorbed (HRP) at 1/3000 dilution

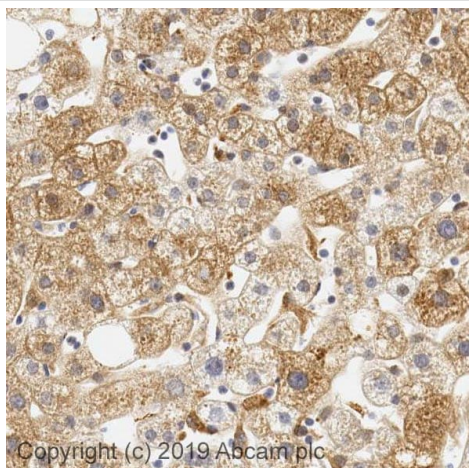
Performed under reducing conditions.

Predicted band size: 22 kDa

Observed band size: 24 kDa

Additional bands at: 45 kDa. We are unsure as to the identity of these extra bands.

ab66564 recognizes the full length FGF-21 Human Recombinant Protein which has an expected molecular weight of ~19.5 kDa.



Immunohistochemistry (Formalin/PFA-fixed paraffin-embedded sections) - Anti-FGF21 antibody (ab66564)

IHC image of FGF21 antibody staining in a section of formalin-fixed paraffin-embedded human liver HCC* tissue performed on a Leica BOND™ system using the standard protocol. The section was pre-treated using heat mediated antigen retrieval with sodium citrate buffer (pH6, epitope retrieval solution 1) for 20mins. The section was then incubated with ab66564, 5ug/ml, for 15 mins at room temperature and detected using an HRP conjugated compact polymer system. DAB was used as the chromogen. The section was then counterstained with haematoxylin and mounted with DPX.

For other IHC staining systems (automated and non-automated) customers should optimize variable parameters such as antigen retrieval conditions, primary antibody concentration and antibody incubation times.

**Tissue obtained from the Human Research Tissue Bank, supported by the NIHR Cambridge Biomedical Research Centre*

Please note: All products are "FOR RESEARCH USE ONLY. NOT FOR USE IN DIAGNOSTIC PROCEDURES"

Our Abpromise to you: Quality guaranteed and expert technical support

- Replacement or refund for products not performing as stated on the datasheet
- Valid for 12 months from date of delivery
- Response to your inquiry within 24 hours
- We provide support in Chinese, English, French, German, Japanese and Spanish
- Extensive multi-media technical resources to help you
- We investigate all quality concerns to ensure our products perform to the highest standards

If the product does not perform as described on this datasheet, we will offer a refund or replacement. For full details of the Abpromise, please visit <https://www.abcam.co.jp/abpromise> or contact our technical team.

Terms and conditions

- Guarantee only valid for products bought direct from Abcam or one of our authorized distributors