

# Anti-FGF2 antibody [EPR20145-219] - BSA and Azide free ab271983

リコンビナント **RabMAb**

画像数 6

### 製品の概要

製品名	Anti-FGF2 antibody [EPR20145-219] - BSA and Azide free
製品の詳細	Rabbit monoclonal [EPR20145-219] to FGF2 - BSA and Azide free
由来種	Rabbit
アプリケーション	<b>適用あり:</b> Indirect ELISA, Flow Cyt (Intra), IP, ICC/IF, WB
種交差性	<b>交差種:</b> Human, Recombinant fragment
免疫原	Recombinant fragment. This information is proprietary to Abcam and/or its suppliers.
ポジティブ・コントロール	WB: Recombinant human FGF2 active protein (aa143-288); K562, U-87 MG and SK-OV-3 whole cell lysates; Human fetal kidney, prostate, fetal heart and testis lysates. ICC/IF: U-87 MG and SK-OV-3 cells. Flow Cyt (intra): K562 cells. IP: K562 whole cell lysate.
特記事項	ab271983 is the carrier-free version of <a href="#">ab208687</a> .

Our **carrier-free** antibodies are typically supplied in a PBS-only formulation, purified and free of BSA, sodium azide and glycerol. The carrier-free buffer and high concentration allow for increased conjugation efficiency.

This conjugation-ready format is designed for use with fluorochromes, metal isotopes, oligonucleotides, and enzymes, which makes them ideal for antibody labelling, functional and cell-based assays, flow-based assays (e.g. mass cytometry) and Multiplex Imaging applications.

Use our **conjugation kits** for antibody conjugates that are ready-to-use in as little as 20 minutes with <1 minute hands-on-time and 100% antibody recovery: available for fluorescent dyes, HRP, biotin and gold.

This product is compatible with the Maxpar<sup>®</sup> Antibody Labeling Kit from Fluidigm, without the need for antibody preparation. Maxpar<sup>®</sup> is a trademark of Fluidigm Canada Inc.

This product is a recombinant monoclonal antibody, which offers several advantages including:

- High batch-to-batch consistency and reproducibility
- Improved sensitivity and specificity
- Long-term security of supply
- Animal-free production

For more information [see here](#).

Our RabMAb<sup>®</sup> technology is a patented hybridoma-based technology for making rabbit monoclonal antibodies. For details on our patents, please refer to [RabMAb<sup>®</sup> patents](#).

製品の特性

製品の状態	Liquid
保存方法	Shipped at 4°C. Store at +4°C. Do Not Freeze.
バッファー	pH: 7.2 Constituent: PBS
キャリア・フリー	はい
精製度	Protein A purified
ポリ/モノ	モノクローナル
クローン名	EPR20145-219
アイソタイプ	IgG

アプリケーション

The Abpromise guarantee      Abpromise保証は、 次のテスト済みアプリケーションにおけるab271983の使用に適用されます  
アプリケーションノートには、推奨の開始希釈率がありますが、適切な希釈率につきましてはご確認ください。

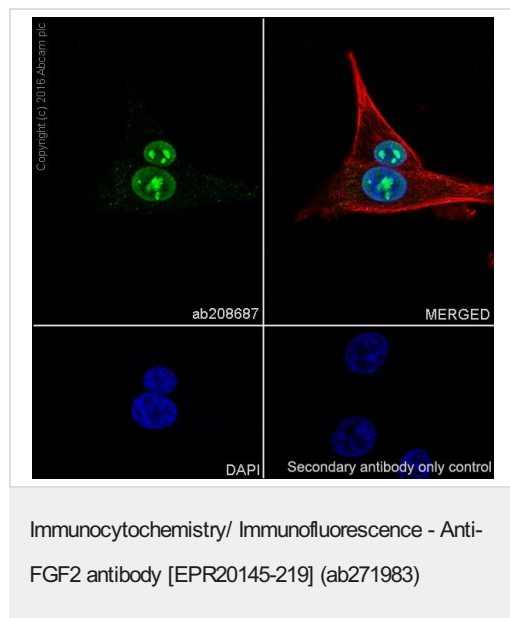
アプリケーション	Abreviews	特記事項
Indirect ELISA		Use at an assay dependent concentration.
Flow Cyt (Intra)		Use at an assay dependent concentration.
IP		Use at an assay dependent concentration.
ICC/IF		Use at an assay dependent concentration.
WB		Use at an assay dependent concentration. Predicted molecular weight: 30 kDa.

ターゲット情報

機能	Plays an important role in the regulation of cell survival, cell division, angiogenesis, cell differentiation and cell migration. Functions as potent mitogen in vitro. Can induce angiogenesis (PubMed:23469107).
組織特異性	Expressed in granulosa and cumulus cells. Expressed in hepatocellular carcinoma cells, but not in non-cancerous liver tissue.
配列類似性	Belongs to the heparin-binding growth factors family.
翻訳後修飾	Phosphorylation at Tyr-215 regulates FGF2 unconventional secretion. Several N-termini starting at positions 94, 125, 126, 132, 143 and 162 have been identified by direct sequencing.
細胞内局在	Secreted. Nucleus. Exported from cells by an endoplasmic reticulum (ER)/Golgi-independent mechanism. Unconventional secretion of FGF2 occurs by direct translocation across the plasma membrane. Binding of exogenous FGF2 to FGFR facilitates endocytosis followed by

translocation of FGF2 across endosomal membrane into the cytosol. Nuclear import from the cytosol requires the classical nuclear import machinery, involving proteins KPNA1 and KPNB1, as well as CEP57.

## 画像



Immunofluorescent analysis of 4% paraformaldehyde-fixed, 0.1% Triton X-100 permeabilized U-87 MG (Human glioblastoma-astrocytoma epithelial cell line) cells labeling FGF2 with **ab208687** at 1/500 dilution, followed by Goat anti-rabbit IgG (Alexa Fluor® 488) (**ab150077**) secondary antibody at 1/1000 dilution (green).

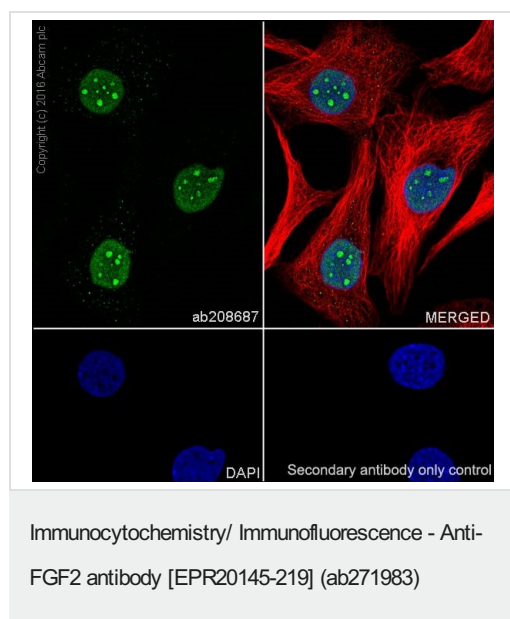
Confocal image showing nuclear and weak cytoplasmic staining on U-87 MG cell line.

The nuclear counterstain is DAPI (blue).

Tubulin is detected with **ab195889** (Anti-alpha Tubulin antibody [DM1A] - Microtubule Marker (Alexa Fluor® 594)) at 1/200 dilution (red).

Secondary antibody only control: Used PBS instead of primary antibody, secondary antibody is Goat anti-rabbit IgG (Alexa Fluor® 488) (**ab150077**) at 1/1000 dilution.

This data was developed using the same antibody clone in a different buffer formulation containing PBS, BSA, glycerol, and sodium azide (**ab208687**).



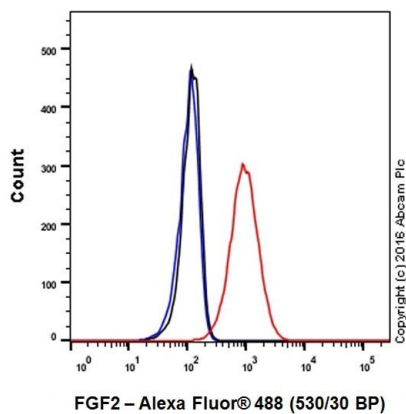
Immunofluorescent analysis of 4% paraformaldehyde-fixed, 0.1% Triton X-100 permeabilized SK-OV-3 (Human ovarian cancer cell line) cells labeling FGF2 with **ab208687** at 1/500 dilution, followed by Goat anti-rabbit IgG (Alexa Fluor® 488) (**ab150077**) secondary antibody at 1/1000 dilution (green).

Confocal image showing nuclear weak cytoplasmic staining on SK-OV-3 cell line.

The nuclear counterstain is DAPI (blue). Tubulin is detected with **ab195889** (Anti-alpha Tubulin antibody [DM1A] - Microtubule Marker (Alexa Fluor® 594)) at 1/200 dilution (red).

Secondary antibody only control: Used PBS instead of primary antibody, secondary antibody is Goat anti-rabbit IgG (Alexa Fluor® 488) (**ab150077**) at 1/1000 dilution.

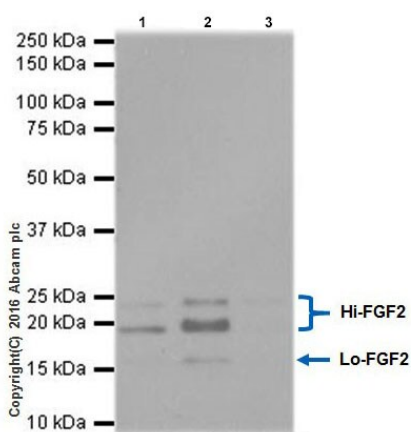
This data was developed using the same antibody clone in a different buffer formulation containing PBS, BSA, glycerol, and sodium azide (**ab208687**).



Flow Cytometry (Intracellular) - Anti-FGF2 antibody  
[EPR20145-219] - BSA and Azide free (ab271983)

Intracellular flow cytometric analysis of 4% paraformaldehyde-fixed K562 (Human chronic myelogenous leukemia cell line from bone marrow) cells labeling FGF2 with **ab208687** at 1/600 dilution (red) compared with a rabbit monoclonal IgG isotype control (**ab172730**; black) and an unlabelled control (cells without incubation with primary antibody and secondary antibody; blue). Goat anti rabbit IgG (Alexa Fluor® 488) at 1/2000 dilution was used as the secondary antibody.

This data was developed using the same antibody clone in a different buffer formulation containing PBS, BSA, glycerol, and sodium azide (**ab208687**).



Immunoprecipitation - Anti-FGF2 antibody  
[EPR20145-219] (ab271983)

FGF2 was immunoprecipitated from 0.35 mg of K562 (Human chronic myelogenous leukemia cell line from bone marrow) whole cell lysate with **ab208687** at 1/30 dilution.

Western blot was performed from the immunoprecipitate using **ab208687** at 1/500 dilution.

VeriBlot for IP Detection Reagent (HRP) (**ab131366**), was used for detection at 1/1000 dilution.

Lane 1: K562 whole cell lysate 10µg (Input).

Lane 2: **ab208687** IP in K562 whole cell lysate.

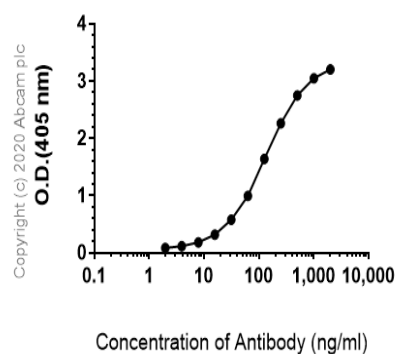
Lane 3: Rabbit monoclonal IgG (**ab172730**) instead of **ab208687** in K562 whole cell lysate.

Blocking and dilution buffer and concentration: 5% NFDM/TBST.

Exposure time: 1 second.

This data was developed using the same antibody clone in a different buffer formulation containing PBS, BSA, glycerol, and sodium azide (**ab208687**).

### Indirect ELISA antibody dose-response curve antigen at 1000 ng/ml

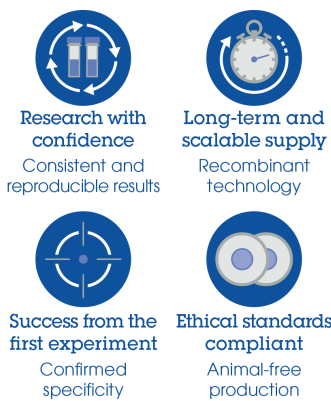


Indirect ELISA - Anti-FGF2 antibody [EPR20145-219] - BSA and Azide free (ab271983)

This data was developed using [ab208687](#), the same antibody clone in a different buffer formulation.

ELISA analysis of Mouse FGF2 recombinant protein at 1000 ng/ml with [ab208687](#). An Alkaline Phosphatase-conjugated AffiniPure Goat Anti-Rabbit IgG (H+L) at 1/2500 dilution was used as the secondary antibody.

### Why choose a recombinant antibody?



Anti-FGF2 antibody [EPR20145-219] - BSA and Azide free (ab271983)

**Please note:** All products are "FOR RESEARCH USE ONLY. NOT FOR USE IN DIAGNOSTIC PROCEDURES"

**Our Abpromise to you: Quality guaranteed and expert technical support**

- Replacement or refund for products not performing as stated on the datasheet
- Valid for 12 months from date of delivery
- Response to your inquiry within 24 hours
- We provide support in Chinese, English, French, German, Japanese and Spanish
- Extensive multi-media technical resources to help you
- We investigate all quality concerns to ensure our products perform to the highest standards

If the product does not perform as described on this datasheet, we will offer a refund or replacement. For full details of the Abpromise, please visit <https://www.abcam.co.jp/abpromise> or contact our technical team.

#### **Terms and conditions**

---

- Guarantee only valid for products bought direct from Abcam or one of our authorized distributors