

### Anti-FGF2 antibody [EPR20145-219] ab208687

リコンビナント RabMAb

★★★★★ **3 Abreviews** **9 References** 画像数 9

#### 製品の概要

製品名	Anti-FGF2 antibody [EPR20145-219]
製品の詳細	Rabbit monoclonal [EPR20145-219] to FGF2
由来種	Rabbit
アプリケーション	<b>適用あり:</b> WB, IP, ICC/IF, Indirect ELISA, Flow Cyt (Intra)
種交差性	<b>交差種:</b> Mouse, Human
免疫原	Recombinant fragment. This information is proprietary to Abcam and/or its suppliers.
ポジティブ・コントロール	WB: Recombinant human FGF2 active protein (aa143-288); K562, U-87 MG and SK-OV-3 whole cell lysates; Human fetal kidney, prostate, fetal heart and testis lysates. ICC/IF: U-87 MG and SK-OV-3 cells. Flow Cyt (intra): K562 cells. IP: K562 whole cell lysate.
特記事項	<p>This product is a recombinant monoclonal antibody, which offers several advantages including:</p> <ul style="list-style-type: none"><li>- High batch-to-batch consistency and reproducibility</li><li>- Improved sensitivity and specificity</li><li>- Long-term security of supply</li><li>- Animal-free production</li></ul> <p>For more information <a href="#">see here</a>.</p> <p>Our RabMAb<sup>®</sup> technology is a patented hybridoma-based technology for making rabbit monoclonal antibodies. For details on our patents, please refer to <a href="#">RabMAb<sup>®</sup> patents</a>.</p>

#### 製品の特性

製品の状態	Liquid
保存方法	Shipped at 4°C. Store at +4°C short term (1-2 weeks). Upon delivery aliquot. Store at -20°C long term. Avoid freeze / thaw cycle.
バッファー	pH: 7.2 Preservative: 0.01% Sodium azide Constituents: 59% PBS, 40% Glycerol (glycerin, glycerine), 0.05% BSA
精製度	Protein A purified
ポリ/モノ	モノクローナル
クローン名	EPR20145-219

## アプリケーション

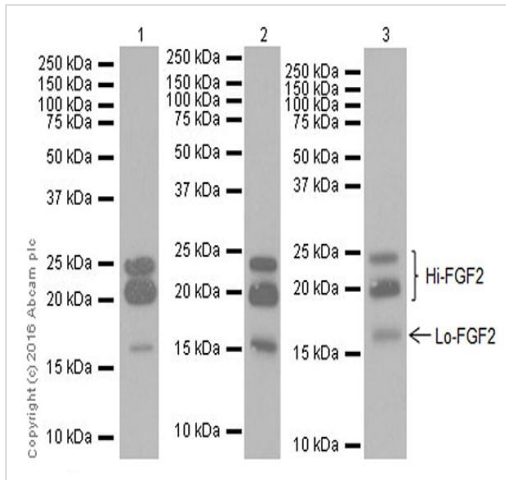
**The Abpromise guarantee** **Abpromise保証は、次のテスト済みアプリケーションにおけるab208687の使用に適用されず**  
アプリケーションノートには、推奨の開始希釈率がありますが、適切な希釈率につきましてはご検討ください。

アプリケーション	Abreviews	特記事項
WB	★★★★★ (2)	1/1000. Detects a band of approximately 24, 22, 18 kDa (predicted molecular weight: 30 kDa). Application guaranteed in human only
IP		1/30.
ICC/IF		1/500.
Indirect ELISA		Use at an assay dependent concentration.
Flow Cyt (Intra)		1/600. Application guaranteed in human only

## ターゲット情報

機能	Plays an important role in the regulation of cell survival, cell division, angiogenesis, cell differentiation and cell migration. Functions as potent mitogen in vitro. Can induce angiogenesis (PubMed:23469107).
組織特異性	Expressed in granulosa and cumulus cells. Expressed in hepatocellular carcinoma cells, but not in non-cancerous liver tissue.
配列類似性	Belongs to the heparin-binding growth factors family.
翻訳後修飾	Phosphorylation at Tyr-215 regulates FGF2 unconventional secretion. Several N-termini starting at positions 94, 125, 126, 132, 143 and 162 have been identified by direct sequencing.
細胞内局在	Secreted. Nucleus. Exported from cells by an endoplasmic reticulum (ER)/Golgi-independent mechanism. Unconventional secretion of FGF2 occurs by direct translocation across the plasma membrane. Binding of exogenous FGF2 to FGFR facilitates endocytosis followed by translocation of FGF2 across endosomal membrane into the cytosol. Nuclear import from the cytosol requires the classical nuclear import machinery, involving proteins KPNA1 and KPNB1, as well as CEP57.

## 画像



Western blot - Anti-FGF2 antibody [EPR20145-219] (ab208687)

**All lanes** : Anti-FGF2 antibody [EPR20145-219] (ab208687) at 1/1000 dilution

**Lane 1** : K562 (Human chronic myelogenous leukemia cell line from bone marrow) whole cell lysate

**Lane 2** : U-87 MG (Human glioblastoma-astrocytoma epithelial cell line) whole cell lysate

**Lane 3** : SK-OV-3 (Human ovarian cancer cell line) whole cell lysate

Lysates/proteins at 10 µg per lane.

### Secondary

**All lanes** : Goat Anti-Rabbit IgG H&L (HRP) (**ab97051**) at 1/100000 dilution

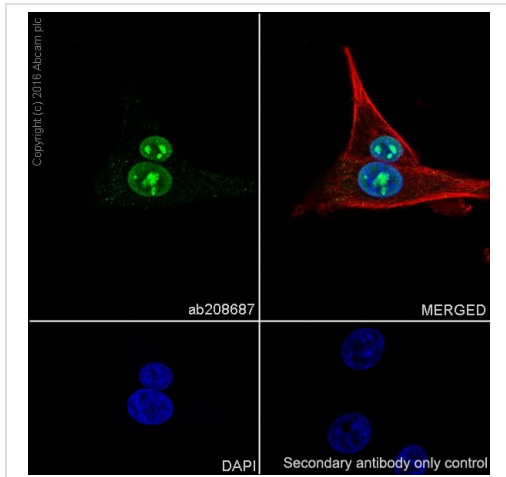
**Predicted band size:** 30 kDa

**Observed band size:** 18,22,24 kDa

Blocking/Dilution buffer: 5% NFDm/TBST.

Exposure time: Lane 1: 3 minutes; Lane 2: 15 seconds; Lane 3: 5 seconds.

The MW observed is consistent with the literatures (PMID:18850066, PMID: 24827991).



Immunocytochemistry/ Immunofluorescence - Anti-FGF2 antibody [EPR20145-219] (ab208687)

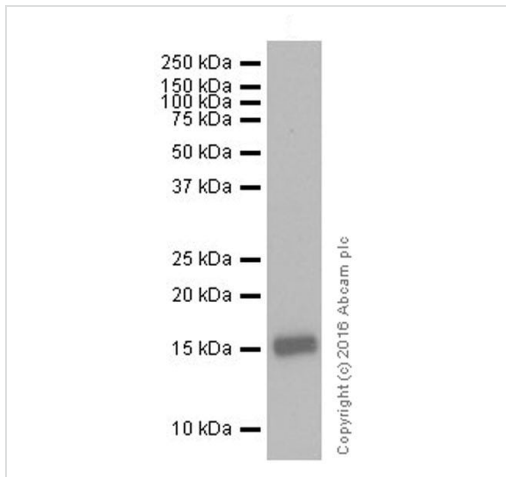
Immunofluorescent analysis of 4% paraformaldehyde-fixed, 0.1% Triton X-100 permeabilized U-87 MG (Human glioblastoma-astrocytoma epithelial cell line) cells labeling FGF2 with ab208687 at 1/500 dilution, followed by Goat anti-rabbit IgG (Alexa Fluor® 488) (**ab150077**) secondary antibody at 1/1000 dilution (green).

Confocal image showing nuclear and weak cytoplasmic staining on U-87 MG cell line.

The nuclear counterstain is DAPI (blue).

Tubulin is detected with **ab195889** (Anti-alpha Tubulin antibody [DM1A] - Microtubule Marker (Alexa Fluor® 594)) at 1/200 dilution (red).

Secondary antibody only control: Used PBS instead of primary antibody, secondary antibody is Goat anti-rabbit IgG (Alexa Fluor® 488) (**ab150077**) at 1/1000 dilution.



Western blot - Anti-FGF2 antibody [EPR20145-219] (ab208687)

Anti-FGF2 antibody [EPR20145-219] (ab208687) at 1/10000 dilution + Recombinant human FGF2 active protein (aa143-288) at 0.01 µg

**Secondary**

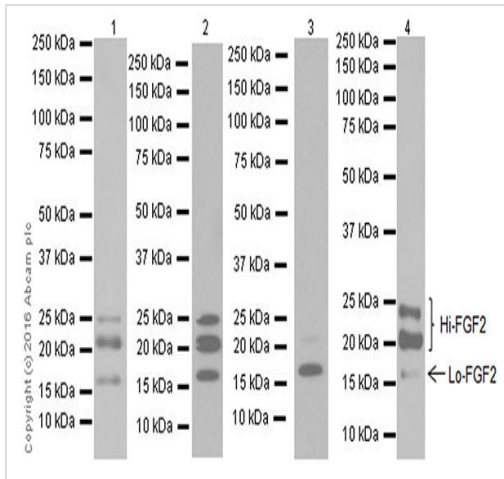
Goat Anti-Rabbit IgG H&L (HRP) (**ab97051**) at 1/100000 dilution

**Predicted band size:** 30 kDa

**Observed band size:** 15 kDa

**Exposure time:** 1 second

Blocking/Dilution buffer: 5% NFDM/TBST.



Western blot - Anti-FGF2 antibody [EPR20145-219] (ab208687)

**All lanes** : Anti-FGF2 antibody [EPR20145-219] (ab208687) at 1/1000 dilution

**Lane 1** : Human fetal kidney lysate

**Lane 2** : Human prostate lysate

**Lane 3** : Human fetal heart lysate

**Lane 4** : Human testis lysate

Lysates/proteins at 10 µg per lane.

### Secondary

**All lanes** : Goat Anti-Rabbit IgG Peroxidase Conjugate, specific to the non-reduced form of IgG at 1/100000 dilution

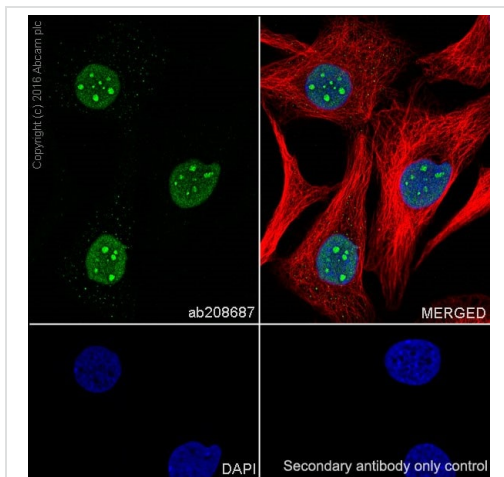
**Predicted band size:** 30 kDa

**Observed band size:** 18,22,24 kDa

**Exposure time:** 3 minutes

Blocking/Dilution buffer: 5% NFDm/TBST.

The MW observed is consistent with the literatures (PMID:18850066, PMID: 24827991).



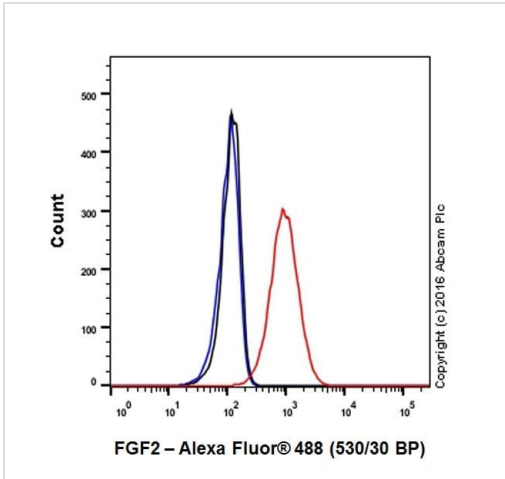
Immunocytochemistry/ Immunofluorescence - Anti-FGF2 antibody [EPR20145-219] (ab208687)

Immunofluorescent analysis of 4% paraformaldehyde-fixed, 0.1% Triton X-100 permeabilized SK-OV-3 (Human ovarian cancer cell line) cells labeling FGF2 with ab208687 at 1/500 dilution, followed by Goat anti-rabbit IgG (Alexa Fluor® 488) (ab150077) secondary antibody at 1/1000 dilution (green).

Confocal image showing nuclear weak cytoplasmic staining on SK-OV-3 cell line.

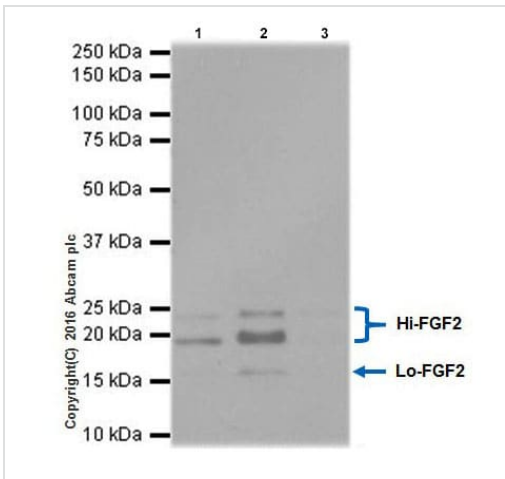
The nuclear counterstain is DAPI (blue). Tubulin is detected with ab195889 (Anti-alpha Tubulin antibody [DM1A] - Microtubule Marker (Alexa Fluor® 594)) at 1/200 dilution (red).

Secondary antibody only control: Used PBS instead of primary antibody, secondary antibody is Goat anti-rabbit IgG (Alexa Fluor® 488) (ab150077) at 1/1000 dilution.



Flow Cytometry (Intracellular) - Anti-FGF2 antibody  
[EPR20145-219] (ab208687)

Intracellular flow cytometric analysis of 4% paraformaldehyde-fixed K562 (Human chronic myelogenous leukemia cell line from bone marrow) cells labeling FGF2 with ab208687 at 1/600 dilution (red) compared with a rabbit monoclonal IgG isotype control (**ab172730**; black) and an unlabelled control (cells without incubation with primary antibody and secondary antibody; blue). Goat anti rabbit IgG (Alexa Fluor® 488) at 1/2000 dilution was used as the secondary antibody.



Immunoprecipitation - Anti-FGF2 antibody  
[EPR20145-219] (ab208687)

FGF2 was immunoprecipitated from 0.35 mg of K562 (Human chronic myelogenous leukemia cell line from bone marrow) whole cell lysate with ab208687 at 1/30 dilution.

Western blot was performed from the immunoprecipitate using ab208687 at 1/500 dilution.

VeriBlot for IP Detection Reagent (HRP) (**ab131366**), was used for detection at 1/1000 dilution.

Lane 1: K562 whole cell lysate 10µg (Input).

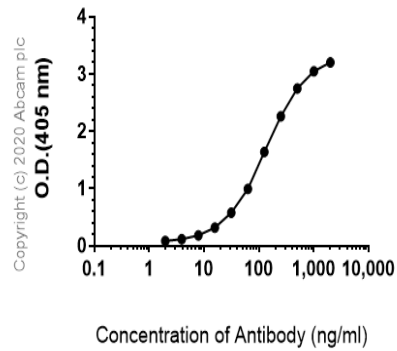
Lane 2: ab208687 IP in K562 whole cell lysate.

Lane 3: Rabbit monoclonal IgG (**ab172730**) instead of ab208687 in K562 whole cell lysate.

Blocking and dilution buffer and concentration: 5% NFDN/TBST.

Exposure time: 1 second.

### Indirect ELISA antibody dose-response curve antigen at 1000 ng/ml



Indirect ELISA - Anti-FGF2 antibody [EPR20145-219] (ab208687)

ELISA analysis of Mouse FGF2 recombinant protein at 1000 ng/ml with ab208687. An Alkaline Phosphatase-conjugated AffiniPure Goat Anti-Rabbit IgG (H+L) at 1/2500 dilution was used as the secondary antibody.

### Why choose a recombinant antibody?



Anti-FGF2 antibody [EPR20145-219] (ab208687)

**Please note:** All products are "FOR RESEARCH USE ONLY. NOT FOR USE IN DIAGNOSTIC PROCEDURES"

### Our Abpromise to you: Quality guaranteed and expert technical support

- Replacement or refund for products not performing as stated on the datasheet
- Valid for 12 months from date of delivery
- Response to your inquiry within 24 hours
- We provide support in Chinese, English, French, German, Japanese and Spanish
- Extensive multi-media technical resources to help you
- We investigate all quality concerns to ensure our products perform to the highest standards

If the product does not perform as described on this datasheet, we will offer a refund or replacement. For full details of the Abpromise, please visit <https://www.abcam.co.jp/abpromise> or contact our technical team.

## Terms and conditions

---

- Guarantee only valid for products bought direct from Abcam or one of our authorized distributors