

Anti-FCGRT/FCRN antibody [EPR22627-25] ab228975

KO 評価済 リコンビナント RabMAb

1 References 画像数 9

製品の概要

製品名	Anti-FCGRT/FCRN antibody [EPR22627-25]
製品の詳細	Rabbit monoclonal [EPR22627-25] to FCGRT/FCRN
由来種	Rabbit
アプリケーション	適用あり: IHC-P, WB, IP, Flow Cyt 適用なし: ICC/IF
種交差性	交差種: Human
免疫原	Recombinant fragment. This information is proprietary to Abcam and/or its suppliers.
ポジティブ・コントロール	WB: Wild-type HEK-293T (non-ATCC), HEK-293 (ATCC), HEK-293 and THP-1 cell lysates; Human placenta and placenta treated with PNGase F tissue lysates. IHC-P: Human spleen and liver tissue. Flow Cyt: THP-1 cells. IP: HEK-293 whole cell lysate.
特記事項	<p>This product is a recombinant monoclonal antibody, which offers several advantages including:</p> <ul style="list-style-type: none"> - High batch-to-batch consistency and reproducibility - Improved sensitivity and specificity - Long-term security of supply - Animal-free production <p>For more information see here.</p> <p>Our RabMAb[®] technology is a patented hybridoma-based technology for making rabbit monoclonal antibodies. For details on our patents, please refer to RabMAb[®] patents.</p>

製品の特性

製品の状態	Liquid
保存方法	Shipped at 4°C. Store at +4°C short term (1-2 weeks). Upon delivery aliquot. Store at -20°C long term. Avoid freeze / thaw cycle.
バッファー	pH: 7.2 Preservative: 0.01% Sodium azide Constituents: PBS, 40% Glycerol (glycerin, glycerine), 0.05% BSA
精製度	Protein A purified
ポリ/モノ	モノクローナル
クローン名	EPR22627-25

アイソタイプIgG

アプリケーション

The Abpromise guarantee Abpromise保証は、 次のテスト済みアプリケーションにおけるab228975の使用に適用されます
アプリケーションノートには、推奨の開始希釈率がありますが、適切な希釈率につきましてはご検討ください。

アプリケーション	Abreviews	特記事項
IHC-P		1/4000. Perform heat mediated antigen retrieval with Tris/EDTA buffer pH 9.0 before commencing with IHC staining protocol.
WB		1/1000. Predicted molecular weight: 40 kDa.
IP		1/30.
Flow Cyt		1/500.

追加情報Is unsuitable for ICC/IF.

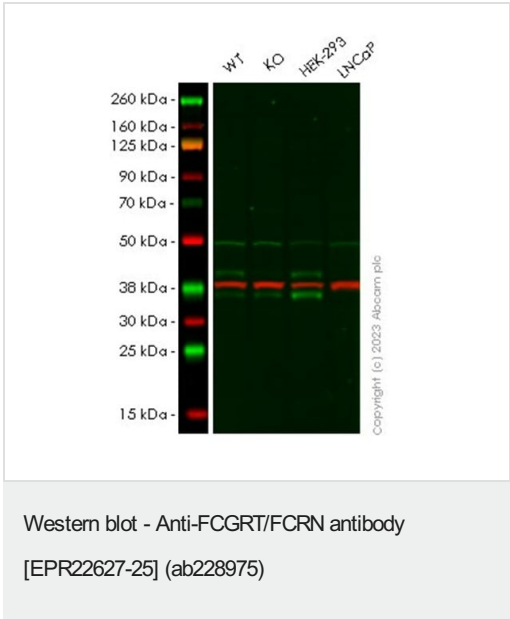
ターゲット情報

機能Binds to the Fc region of monomeric immunoglobulins gamma. Mediates the uptake of IgG from milk. Possible role in transfer of immunoglobulin G from mother to fetus.

配列類似性Belongs to the immunoglobulin superfamily.

細胞内局在Cell membrane.

画像



All lanes : Anti-FCGRT/FCRN antibody [EPR22627-25] (ab228975) at 1/1000 dilution

Lane 1 : Wild-type HEK-293T (non-ATCC) cell lysate

Lane 2 : Human FCGRT (FCRN) knockout HEK-293T (non-ATCC) cell lysate ([ab257435](#))

Lane 3 : HEK293 (ATCC) cell lysate

Lane 4 : LNCaP cell lysate

Lysates/proteins at 20 µg per lane.

Secondary

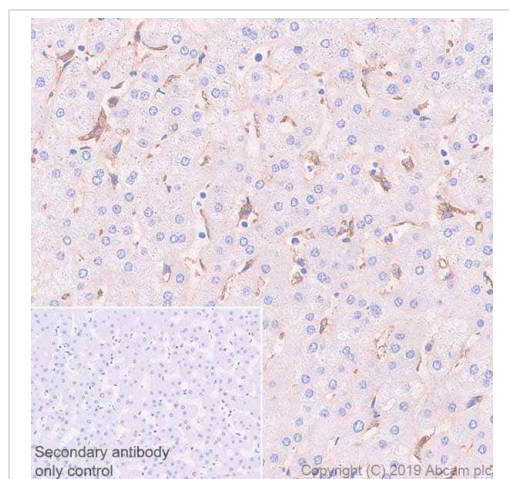
All lanes : Goat anti-Rabbit IgG H&L (IRDye® 800CW) preadsorbed ([ab216773](#)) at 1/10000 dilution

Predicted band size: 40 kDa

Observed band size: 40 kDa

Lanes 1-4: Merged signal (red and green). Green - ab228975 observed at 40 kDa. Red - loading control [ab7291](#) observed at 50 kDa.

ab228975 Anti-FCGRT/FCRN antibody [EPR22627-25] was shown to specifically react with FCGRT/FCRN in wild-type HEK-293T cells. Loss of signal was observed when knockout cell line [ab265075](#) (knockout cell lysate [ab257435](#)) was used. Wild-type and FCGRT/FCRN knockout samples were subjected to SDS-PAGE. ab228975 and Anti-alpha Tubulin antibody [DM1A] - Loading Control ([ab7291](#)) were incubated overnight at 4°C at 1 in 1000 dilution and 1 in 20000 dilution respectively. Blots were developed with Goat anti-Rabbit IgG H&L (IRDye® 800CW) preadsorbed ([ab216773](#)) and Goat anti-Mouse IgG H&L (IRDye® 680RD) preadsorbed ([ab216776](#)) secondary antibodies at 1 in 20000 dilution for 1 hour at room temperature before imaging.

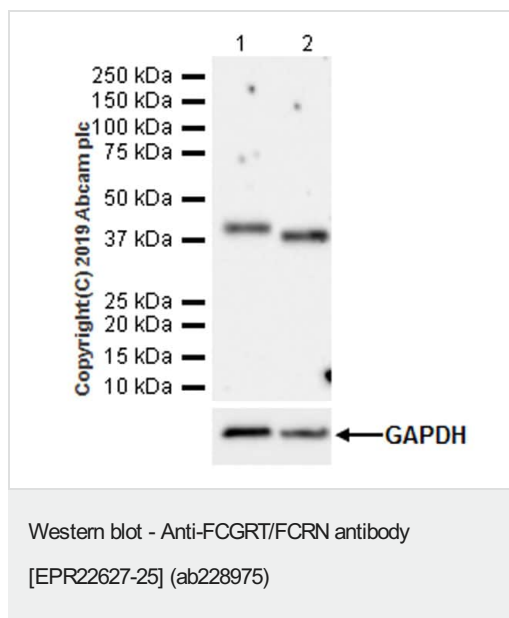


Immunohistochemistry (Formalin/PFA-fixed paraffin-embedded sections) - Anti-FCGRT/FCRN antibody [EPR22627-25] (ab228975)

Immunohistochemical analysis of paraffin-embedded human liver tissue labeling FCGRT/FCRN with ab228975 at 1/4000 dilution followed by a ready to use Rabbit specific IHC polymer detection kit HRP/DAB ([ab209101](#)). Positive staining on human liver (PMID: 28402755) is observed. The section was incubated with ab228975 for 30 mins at room temperature. The immunostaining was performed on a Leica Biosystems BOND® RX instrument. Counterstained with hematoxylin.

Heat mediated antigen retrieval with Tris-EDTA buffer (pH 9.0, epitope retrieval solution 2) for 20mins.

Secondary antibody only control: Used PBS instead of primary antibody, secondary antibody is a ready to use Rabbit specific IHC polymer detection kit HRP/DAB ([ab209101](#)).



All lanes : Anti-FCGRT/FCRN antibody [EPR22627-25]
(ab228975) at 1/1000 dilution

Lane 1 : Human placenta tissue lysate

Lane 2 : Human placenta treated with PNGase F tissue lysate

Lysates/proteins at 20 µg per lane.

Secondary

All lanes : VeriBlot for IP Detection Reagent (HRP) (**ab131366**) at
1/1000 dilution

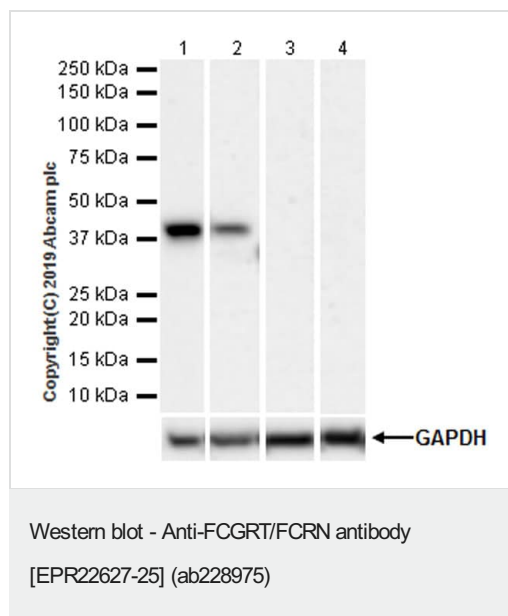
Predicted band size: 40 kDa

Exposure time: 3 minutes

Blocking/Diluting buffer and concentration: 5% NFDM/TBST.

Human FCGRT/FCRN possesses one potential glycosylation site.

The molecular weight of deglycosylated FCGRT/FCRN is consistent
with the literature (PMID: 12163559).



All lanes : Anti-FCGRT/FCRN antibody [EPR22627-25] (ab228975) at 1/1000 dilution

Lane 1 : THP-1 (human monocytic leukemia monocyte), whole cell lysate

Lane 2 : HEK-293 (human embryonic kidney epithelial cell), whole cell lysate

Lane 3 : LNCaP (human prostate carcinoma epithelial cell), whole cell lysate

Lane 4 : HeLa (human cervix adenocarcinoma epithelial cell), whole cell lysate

Lysates/proteins at 20 µg per lane.

Secondary

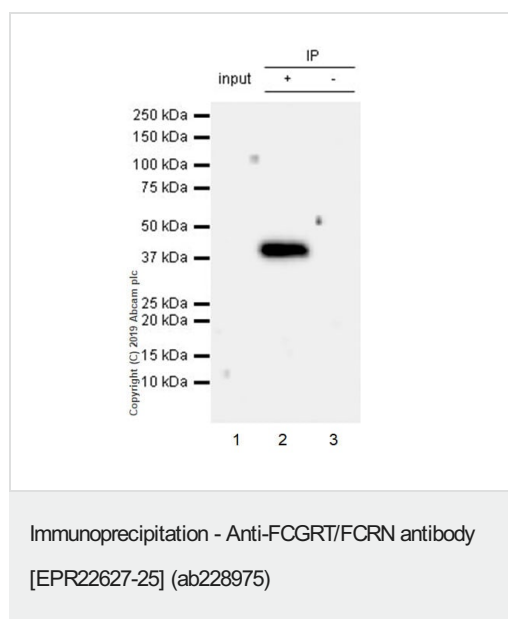
All lanes : Goat Anti-Rabbit IgG H&L (HRP) (**ab97051**) at 1/100000 dilution

Predicted band size: 40 kDa

Blocking/Diluting buffer and concentration: 5% NFDM/TBST.

Exposure times: Lane 1: 37 secs; Lane 2-4: 3 mins.

Negative control: LNCaP (PMID: 27974681) and HeLa (PMID: 21216798).



FCGRT/FCRN was immunoprecipitated from 0.35 mg HEK-293 (human embryonic kidney epithelial cell) whole cell lysate with ab228975 at 1/30 dilution (2µg in 0.35mg lysates). Western blot was performed on the immunoprecipitate using ab228975 1/1000 dilution (0.55 µg/ml). VeriBlot for IP Detection Reagent (HRP) (**ab131366**) was used as the secondary antibody at 1/5000 dilution.

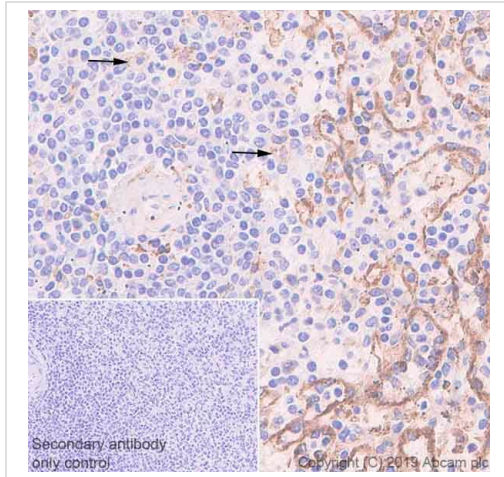
Lane 1: HEK-293 (human embryonic kidney epithelial cell) whole cell lysate 10µg

Lane 2: ab228975 IP in HEK-293 whole cell lysate

Lane 3: Rabbit monoclonal IgG (**ab172730**) instead of ab228975 in HEK-293 whole cell lysate.

Blocking and dilution buffer and concentration: 5% NFDM/TBST.

Exposure time: 100 seconds.

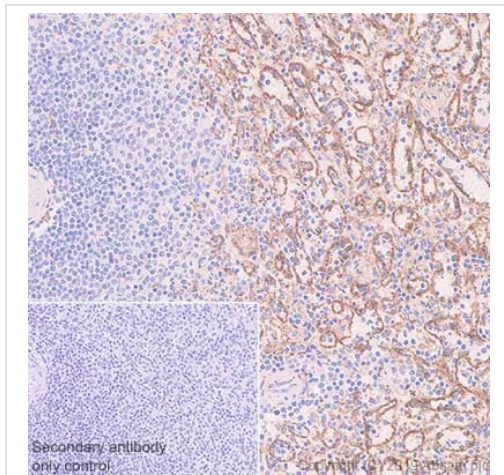


Immunohistochemistry (Formalin/PFA-fixed paraffin-embedded sections) - Anti-FCGRT/FCRN antibody [EPR22627-25] (ab228975)

Immunohistochemical analysis of paraffin-embedded human spleen tissue labeling FCGRT/FCRN with ab228975 at 1/4000 dilution followed by a ready to use Rabbit specific IHC polymer detection kit HRP/DAB (**ab209101**). Positive staining on human spleen, arrows indicate the macrophages (PMID: 28402755) is observed. The section was incubated with ab228975 for 30 mins at room temperature.

The immunostaining was performed on a Leica Biosystems BOND® RX instrument. Counterstained with hematoxylin. Heat mediated antigen retrieval with Tris-EDTA buffer (pH 9.0, epitope retrieval solution 2) for 20mins.

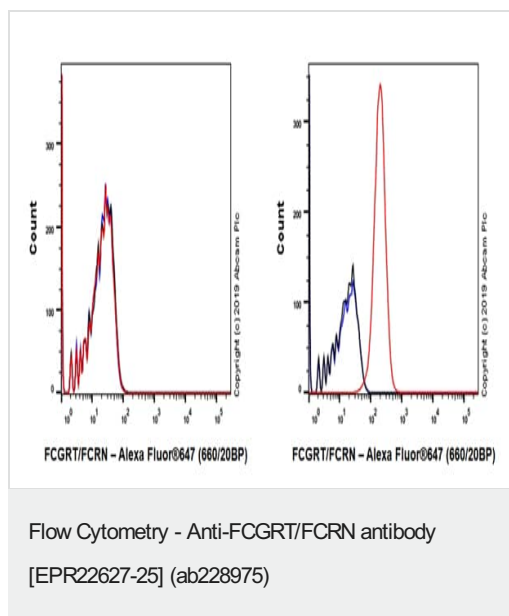
Secondary antibody only control: Used PBS instead of primary antibody, secondary antibody is a ready to use Rabbit specific IHC polymer detection kit HRP/DAB (**ab209101**).



Immunohistochemistry (Formalin/PFA-fixed paraffin-embedded sections) - Anti-FCGRT/FCRN antibody [EPR22627-25] (ab228975)

Immunohistochemical analysis of paraffin-embedded human spleen tissue labeling FCGRT/FCRN with ab228975 at 1/4000 dilution (0.14 µg/ml) followed by a ready to use Rabbit specific IHC polymer detection kit HRP/DAB (**ab209101**). Positive staining on endothelial cells of human spleen (PMID: 28402755) is observed. The section was incubated with ab228975 for 30 mins at room temperature. The immunostaining was performed on a Leica Biosystems BOND® RX instrument. Counterstained with hematoxylin. Heat mediated antigen retrieval with Tris-EDTA buffer (pH 9.0, epitope retrieval solution 2) for 20mins.

Secondary antibody only control: Used PBS instead of primary antibody, secondary antibody is a ready to use Rabbit specific IHC polymer detection kit HRP/DAB (**ab209101**).



Flow cytometric analysis of HeLa (human cervix adenocarcinoma epithelial cell, Left) / THP-1 (human monocytic leukemia monocyte, Right) cells labeling FCGR2/FCRN with ab228975 at 1/500 dilution (Red) compared with a Rabbit monoclonal IgG (**ab172730**) (Black) isotype control and an unlabeled control (cells without incubation with primary antibody and secondary antibody) (Blue). Goat anti rabbit IgG (Alexa Fluor® 647, **ab150079**) at 1/2000 dilution was used as the secondary antibody. Bright fluorophore (like AF647) conjugated secondary antibodies are recommended to get good separation.

Negative control: HeLa (PMID: 21216798).

Gated on viable cells.

Why choose a recombinant antibody?

<p>Research with confidence Consistent and reproducible results</p>	<p>Long-term and scalable supply Recombinant technology</p>
<p>Success from the first experiment Confirmed specificity</p>	<p>Ethical standards compliant Animal-free production</p>

Anti-FCGR2/FCRN antibody [EPR22627-25]
(ab228975)

Please note: All products are "FOR RESEARCH USE ONLY. NOT FOR USE IN DIAGNOSTIC PROCEDURES"

Our Abpromise to you: Quality guaranteed and expert technical support

- Replacement or refund for products not performing as stated on the datasheet
- Valid for 12 months from date of delivery
- Response to your inquiry within 24 hours
- We provide support in Chinese, English, French, German, Japanese and Spanish
- Extensive multi-media technical resources to help you
- We investigate all quality concerns to ensure our products perform to the highest standards

If the product does not perform as described on this datasheet, we will offer a refund or replacement. For full details of the Abpromise, please visit <https://www.abcam.co.jp/abpromise> or contact our technical team.

Terms and conditions

- Guarantee only valid for products bought direct from Abcam or one of our authorized distributors