

Anti-FBXL3 antibody ab96645

★★★★★ 1 Abreviews 3 References 両俵数?

医薬用外劇物

製品の概要

製品名	Anti-FBXL3 antibody
製品の詳細	Rabbit polyclonal to FBXL3
由来種	Rabbit
アプリケーション	適用あり: WB, ICC/IF
種交差性	交差種: Human 交差が予測される動物種: Mouse, Rat, Cow, Zebrafish 
免疫原	Recombinant protein fragment corresponding to a region within amino acids 14 and 279 of Human FBXL3 (NP_036290).
ポジティブ・コントロール	293T, H1299, HeLa, HepG2 and Raji cell lines. MOLT4 whole cell lysate and A431 cells
特記事項	<p>The Life Science industry has been in the grips of a reproducibility crisis for a number of years. Abcam is leading the way in addressing this with our range of recombinant monoclonal antibodies and knockout edited cell lines for gold-standard validation. Please check that this product meets your needs before purchasing.</p> <p>If you have any questions, special requirements or concerns, please send us an inquiry and/or contact our Support team ahead of purchase. Recommended alternatives for this product can be found below, along with publications, customer reviews and Q&As</p>

製品の特性

製品の状態	Liquid
保存方法	Shipped at 4°C. Upon delivery aliquot and store at -20°C or -80°C. Avoid repeated freeze / thaw cycles.
バッファー	pH: 7.00 Preservative: 0.01% Thimerosal (merthiolate) Constituents: 1.21% Tris, 0.75% Glycine, 10% Glycerol (glycerin, glycerine)
精製度	Immunogen affinity purified
ポリ/モノ	ポリクローナル
アイソタイプ	IgG

アプリケーション

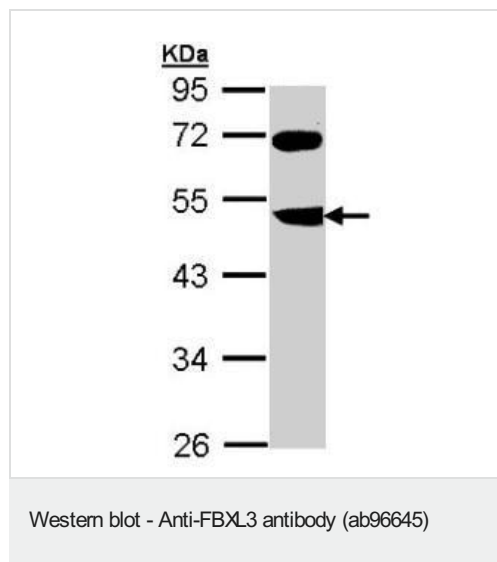
The Abpromise guarantee Abpromise保証は、次のテスト済みアプリケーションにおけるab96645の使用に適用されず
アプリケーションノートには、推奨の開始希釈率がありますが、適切な希釈率につきましてはご確認ください。

アプリケーション	Abreviews	特記事項
WB	★★★★★ (1)	1/500 - 1/3000. Predicted molecular weight: 49 kDa.
ICC/IF		1/100 - 1/200.

ターゲット情報

機能	Substrate-recognition component of some SCF (SKP1-CUL1-F-box protein)-type E3 ubiquitin ligase complex involved in circadian clock function. The SCF(FBXL3) complex acts by mediating ubiquitination and subsequent degradation of CRY1 and CRY2. Recruiter of target protein that may recognize and bind to some phosphorylated proteins and promotes their ubiquitination and degradation.
組織特異性	Widely expressed.
配列類似性	Contains 1 F-box domain. Contains 7 LRR (leucine-rich) repeats.
細胞内局在	Nucleus. Cytoplasm. Predominantly nuclear.

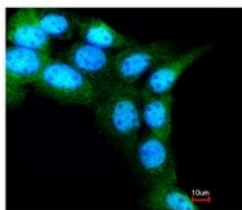
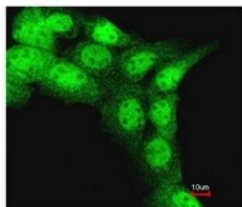
画像



Anti-FBXL3 antibody (ab96645) at 1/1000 dilution + MOLT4 whole cell lysate at 30 µg

Predicted band size: 49 kDa

10% SDS PAGE



Immunocytochemistry/ Immunofluorescence - Anti-FBXL3 antibody (ab96645)

ab96645, at a 1/200 dilution, staining FBXL3 in paraformaldehyde fixed A431 by Immunofluorescence analysis. Lower image merged with DNA probe.

Please note: All products are "FOR RESEARCH USE ONLY. NOT FOR USE IN DIAGNOSTIC PROCEDURES"

Our Abpromise to you: Quality guaranteed and expert technical support

- Replacement or refund for products not performing as stated on the datasheet
- Valid for 12 months from date of delivery
- Response to your inquiry within 24 hours
- We provide support in Chinese, English, French, German, Japanese and Spanish
- Extensive multi-media technical resources to help you
- We investigate all quality concerns to ensure our products perform to the highest standards

If the product does not perform as described on this datasheet, we will offer a refund or replacement. For full details of the Abpromise, please visit <https://www.abcam.co.jp/abpromise> or contact our technical team.

Terms and conditions

- Guarantee only valid for products bought direct from Abcam or one of our authorized distributors