


Anti-FAM3C/ILEI antibody ab72182

★★★★☆ **5 Abreviews** **10 References** 画像数 5

製品の概要

製品名	Anti-FAM3C/ILEI antibody
製品の詳細	Rabbit polyclonal to FAM3C/ILEI
由来種	Rabbit
アプリケーション	適用あり: WB, IHC-P
種交差性	交差種: Mouse, Rat, Human 交差が予測される動物種: Chimpanzee, Pufferfish, Opossum 
免疫原	Synthetic peptide. This information is proprietary to Abcam and/or its suppliers.
特記事項	<p>The Life Science industry has been in the grips of a reproducibility crisis for a number of years. Abcam is leading the way in addressing this with our range of recombinant monoclonal antibodies and knockout edited cell lines for gold-standard validation. Please check that this product meets your needs before purchasing.</p> <p>If you have any questions, special requirements or concerns, please send us an inquiry and/or contact our Support team ahead of purchase. Recommended alternatives for this product can be found below, along with publications, customer reviews and Q&As</p>

製品の特性

製品の状態	Liquid
保存方法	Shipped at 4°C. Store at +4°C short term (1-2 weeks). Upon delivery aliquot. Store at -20°C. Avoid freeze / thaw cycle.
バッファー	pH: 7.4 Preservative: 0.05% Sodium azide Constituents: PBS, 0.05% BSA
精製度	Immunogen affinity purified
ポリ/モノ	ポリクローナル
アイソタイプ	IgG

アプリケーション

The Abpromise guarantee

Abpromise保証は、 次のテスト済みアプリケーションにおけるab72182の使用に適用されます

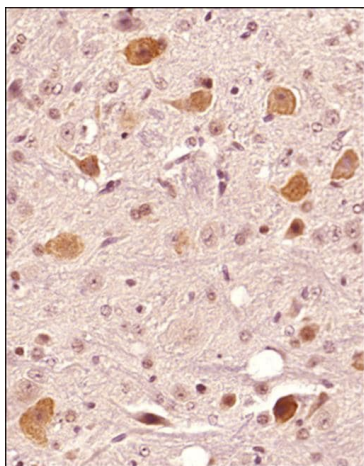
アプリケーションノートには、推奨の開始希釈率がありますが、適切な希釈率につきましてはご確認ください。

アプリケーション	Abreviews	特記事項
WB	★★★★★ (2)	Use a concentration of 0.5 - 1 µg/ml. Detects a band of approximately 30 kDa (predicted molecular weight: 25 kDa).
IHC-P		Use a concentration of 5 - 10 µg/ml.

ターゲット情報

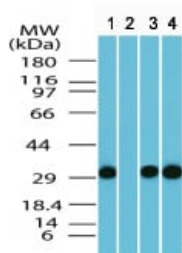
機能	May be involved in retinal laminar formation. Promotes epithelial to mesenchymal transition.
組織特異性	Present in most secretory epithelia (at protein level).
配列類似性	Belongs to the FAM3 family.
細胞内局在	Secreted. Cytoplasmic vesicle. Cytoplasmic in some cancer cells.

画像



Immunohistochemistry (Formalin/PFA-fixed paraffin-embedded sections) - Anti-FAM3C/ILEI antibody (ab72182)

IHC analysis of a formalin fixed paraffin embedded (FFPE) tissue section of mouse brain using ab72182 at 1:1300 dilution. The primary antibody bound to FAM3C protein in the tissue section was detected using a HRP labeled secondary antibody and DAB reagent. Nuclei of the cells were counterstained with hematoxylin. This FAM3C antibody generated a diffused cytoplasmic staining in the glial cells as well as in the neuronal cells. The signal was more intense in neurons with some level of puncta formation which signifies the presence of FAM3C in the cytoplasmic vesicles



Western blot - Anti-FAM3C/ILEI antibody (ab72182)

All lanes : Anti-FAM3C/ILEI antibody (ab72182) at 0.5 µg/ml

Lane 1 : Human brain lysate

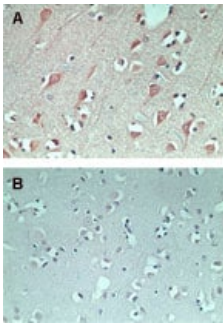
Lane 2 : Human brain lysate with immunising peptide

Lane 3 : Mouse brain lysate

Lane 4 : Rat brain lysate

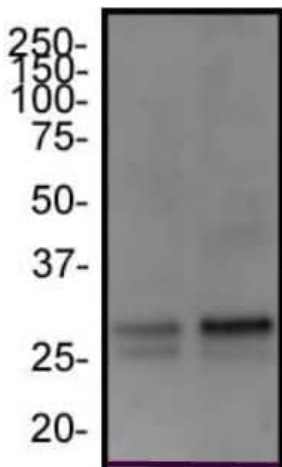
Predicted band size: 25 kDa

Observed band size: 30 kDa



Immunohistochemistry (Formalin/PFA-fixed paraffin-embedded sections) - Anti-FAM3C/ILEI antibody (ab72182)

ab72182 at 5µg/ml staining FAM3C/ILEI in normal human brain by Immunohistochemistry using paraffin-embedded tissue. (Control rabbit Ig used for figure B).



Western blot - Anti-FAM3C/ILEI antibody (ab72182)

All lanes : Anti-FAM3C/ILEI antibody (ab72182) at 2 µg/ml

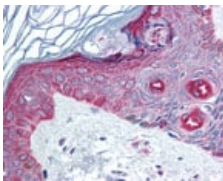
Lane 1 : Human testis tissue lysate with 5% non-fat milk in TBST

Lane 2 : Mouse testis tissue lysate with 5% non-fat milk in TBST

Secondary

All lanes : anti-rabbit HRP

Predicted band size: 25 kDa



Immunohistochemistry (Formalin/PFA-fixed paraffin-embedded sections) - Anti-FAM3C/ILEI antibody (ab72182)

ab72182 at 10µg/ml staining FAM3C/ILEI in human skin by Immunohistochemistry using paraffin-embedded tissue.

Please note: All products are "FOR RESEARCH USE ONLY. NOT FOR USE IN DIAGNOSTIC PROCEDURES"

Our Abpromise to you: Quality guaranteed and expert technical support

- Replacement or refund for products not performing as stated on the datasheet
- Valid for 12 months from date of delivery
- Response to your inquiry within 24 hours

- We provide support in Chinese, English, French, German, Japanese and Spanish
- Extensive multi-media technical resources to help you
- We investigate all quality concerns to ensure our products perform to the highest standards

If the product does not perform as described on this datasheet, we will offer a refund or replacement. For full details of the Abpromise, please visit <https://www.abcam.co.jp/abpromise> or contact our technical team.

Terms and conditions

- Guarantee only valid for products bought direct from Abcam or one of our authorized distributors