


Anti-FAK (phospho Y576) antibody ab226847

画像数 4

製品の概要

製品名	Anti-FAK (phospho Y576) antibody
製品の詳細	Rabbit polyclonal to FAK (phospho Y576)
由来種	Rabbit
アプリケーション	適用あり: WB, ICC/IF
種交差性	交差種: Human 交差が予測される動物種: Mouse, Rat, Chicken, Xenopus laevis 
免疫原	Synthetic peptide within Human FAK (internal sequence) (phospho Y576). The exact sequence is proprietary. Carrier-protein conjugated. Database link: Q05397
ポジティブ・コントロール	WB: HEK-293T, HepG2 and HeLa whole cell extracts. ICC/IF: SK-N-SH cells. IP: HepG2 whole cell extract.
特記事項	<p>The Life Science industry has been in the grips of a reproducibility crisis for a number of years. Abcam is leading the way in addressing this with our range of recombinant monoclonal antibodies and knockout edited cell lines for gold-standard validation. Please check that this product meets your needs before purchasing.</p> <p>If you have any questions, special requirements or concerns, please send us an inquiry and/or contact our Support team ahead of purchase. Recommended alternatives for this product can be found below, along with publications, customer reviews and Q&As</p>

製品の特性

製品の状態	Liquid
保存方法	Shipped at 4°C. Store at +4°C short term (1-2 weeks). Upon delivery aliquot. Store at -20°C long term. Avoid freeze / thaw cycle.
バッファー	pH: 7.00 Preservative: 0.025% Proclin 300 Constituents: 78% PBS, 1% BSA, 20% Glycerol (glycerin, glycerine)
精製度	Immunogen affinity purified
ポリ/モノ	ポリクローナル
アイソタイプ	IgG

アプリケーション

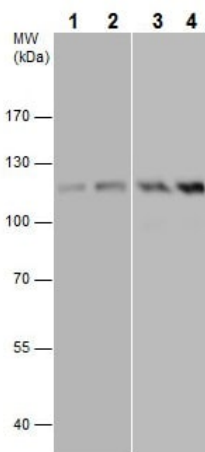
The Abpromise guarantee **Abpromise保証は、次のテスト済みアプリケーションにおけるab226847の使用に適用されます**
アプリケーションノートには、推奨の開始希釈率がありますが、適切な希釈率につきましてはご検討ください。

アプリケーション	Abreviews	特記事項
WB		1/500 - 1/3000. Predicted molecular weight: 119 kDa.
ICC/IF		1/100 - 1/1000.

ターゲット情報

機能	Non-receptor protein-tyrosine kinase implicated in signaling pathways involved in cell motility, proliferation and apoptosis. Activated by tyrosine-phosphorylation in response to either integrin clustering induced by cell adhesion or antibody cross-linking, or via G-protein coupled receptor (GPCR) occupancy by ligands such as bombesin or lysophosphatidic acid, or via LDL receptor occupancy. Microtubule-induced dephosphorylation at Tyr-397 is crucial for the induction of focal adhesion disassembly. Plays a potential role in oncogenic transformations resulting in increased kinase activity.
組織特異性	Expressed in all organs tested, in lymphoid cell lines, but most abundantly in brain.
配列類似性	Belongs to the protein kinase superfamily. Tyr protein kinase family. FAK subfamily. Contains 1 FERM domain. Contains 1 protein kinase domain.
ドメイン	The first Pro-rich domain interacts with the SH3 domain of CRK-associated substrate (BCAR1) and CASL. The carboxy-terminal region is the site of focal adhesion targeting (FAT) sequence which mediates the localization of FAK1 to focal adhesions.
翻訳後修飾	Phosphorylated on 6 tyrosine residues upon activation. Microtubule-induced dephosphorylation at Tyr-397 could be catalyzed by PTPN11 and regulated by ZFYVE21. Dephosphorylated by PTPN11 upon EPHA2 activation by its ligand EFNA1.
細胞内局在	Cell junction > focal adhesion. Cell membrane. Constituent of focal adhesions.

画像



Western blot - Anti-FAK (phospho Y576) antibody (ab226847)

All lanes : Anti-FAK (phospho Y576) antibody (ab226847) at 1/3000 dilution

Lane 1 : Untreated HEK-293T (human epithelial cell line from embryonic kidney transformed with large T antigen) whole cell extract

Lane 2 : EGF-treated (50 ng/ml for 30 min) HEK-293T (human epithelial cell line from embryonic kidney transformed with large T antigen) whole cell extract

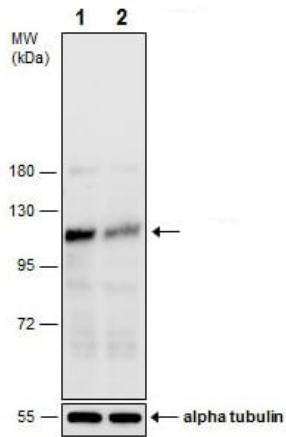
Lane 3 : Untreated HepG2 (human liver hepatocellular carcinoma cell line) whole cell extract

Lane 4 : EGF-treated (200 ng/ml for 30 min) HepG2 (human liver hepatocellular carcinoma cell line) whole cell extract

Lysates/proteins at 30 µg per lane.

Predicted band size: 119 kDa

7.5% SDS-PAGE gel.



Western blot - Anti-FAK (phospho Y576) antibody (ab226847)

All lanes : Anti-FAK (phospho Y576) antibody (ab226847) at 1/500 dilution

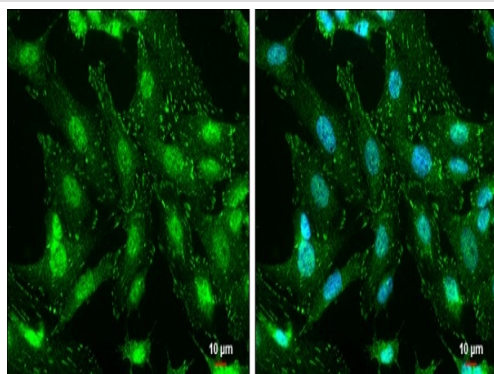
Lane 1 : Non-transfected HeLa (human epithelial cell line from cervix adenocarcinoma) whole cell extract

Lane 2 : HeLa (human epithelial cell line from cervix adenocarcinoma) transfected with FAK shRNA whole cell extract

Lysates/proteins at 50 µg per lane.

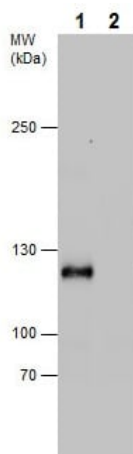
Predicted band size: 119 kDa

7.5% SDS-PAGE gel.



Immunocytochemistry/ Immunofluorescence - Anti-FAK (phospho Y576) antibody (ab226847)

4% paraformaldehyde-fixed SK-N-SH (human neuroblastoma cell line) cells labeling FAK (phospho Y576) (green) using ab226847 at 1/500 dilution in ICC/IF. Nuclear Counterstain: Hoechst 33342.



Western blot - Anti-FAK (phospho Y576) antibody (ab226847)

All lanes : Anti-FAK (phospho Y576) antibody (ab226847) at 1/1000 dilution

Lane 1 : Untreated HepG2 (human liver hepatocellular carcinoma cell line) whole cell extract

Lane 2 : HepG2 (human liver hepatocellular carcinoma cell line) treated with CIP (Calf-intestinal alkaline phosphatase), whole cell extract

Lysates/proteins at 30 µg per lane.

Predicted band size: 119 kDa

5% SDS-PAGE gel.

Please note: All products are "FOR RESEARCH USE ONLY. NOT FOR USE IN DIAGNOSTIC PROCEDURES"

Our Abpromise to you: Quality guaranteed and expert technical support

- Replacement or refund for products not performing as stated on the datasheet
- Valid for 12 months from date of delivery
- Response to your inquiry within 24 hours

- We provide support in Chinese, English, French, German, Japanese and Spanish
- Extensive multi-media technical resources to help you
- We investigate all quality concerns to ensure our products perform to the highest standards

If the product does not perform as described on this datasheet, we will offer a refund or replacement. For full details of the Abpromise, please visit <https://www.abcam.co.jp/abpromise> or contact our technical team.

Terms and conditions

- Guarantee only valid for products bought direct from Abcam or one of our authorized distributors