

Anti-FABP6 antibody ab96122

面格新 1

医薬用外劇物

製品の概要

製品名	Anti-FABP6 antibody
製品の詳細	Rabbit polyclonal to FABP6
由来種	Rabbit
アプリケーション	適用あり: WB
種交差性	交差種: Human
免疫原	Recombinant fragment containing a sequence corresponding to a region within amino acids 1-152 of Human FABP6 (NP_001035532).
ポジティブ・コントロール	HeLa S3 and HepG2 whole cell lysate (ab7900); 293T, A431, Molt-4, and Raji cell lysates
特記事項	<p>The Life Science industry has been in the grips of a reproducibility crisis for a number of years. Abcam is leading the way in addressing this with our range of recombinant monoclonal antibodies and knockout edited cell lines for gold-standard validation. Please check that this product meets your needs before purchasing.</p> <p>If you have any questions, special requirements or concerns, please send us an inquiry and/or contact our Support team ahead of purchase. Recommended alternatives for this product can be found below, along with publications, customer reviews and Q&As</p>

製品の特性

製品の状態	Liquid
保存方法	Shipped at 4°C. Upon delivery aliquot and store at -20°C or -80°C. Avoid repeated freeze / thaw cycles.
バッファー	<p>pH: 7.00</p> <p>Preservative: 0.01% Thimerosal (merthiolate)</p> <p>Constituents: 1.21% Tris, 0.75% Glycine, 10% Glycerol (glycerin, glycerine)</p>
精製度	Immunogen affinity purified
ポリ/モノ	ポリクローナル
アイソタイプ	IgG

アプリケーション

The Abpromise guarantee

Abpromise保証は、次のテスト済みアプリケーションにおけるab96122の使用に適用されます

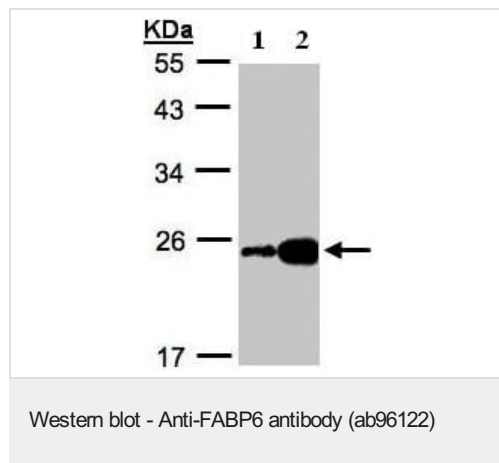
アプリケーションノートには、推奨の開始希釈率がありますが、適切な希釈率につきましてはご確認ください。

アプリケーション	Abreviews	特記事項
WB		1/500 - 1/3000. Predicted molecular weight: 20 kDa.

ターゲット情報

機能	Ileal protein which stimulates gastric acid and pepsinogen secretion. Seems to be able to bind to bile salts and bilirubins. Isoform 2 is essential for the survival of colon cancer cells to bile acid-induced apoptosis.
組織特異性	Isoform 2 is expressed in colorectal adenocarcinomas and their adjacent normal mucosa (at protein level). Isoform 1 is expressed in the jejunum, ileum, cecum and ascending colon intestine. Isoform 2 is expressed in the gallbladder, duodenum, jejunum, ileum, cecum, ascending, transverse and descending colon, sigmoid colon and rectum.
配列類似性	Belongs to the calycin superfamily. Fatty-acid binding protein (FABP) family.
ドメイン	Forms a beta-barrel structure that accommodates the hydrophobic ligand in its interior.
細胞内局在	Cytoplasm and Cytoplasm. Localized close to nucleus on the apical side of both normal and neoplastic cells.

画像



All lanes : Anti-FABP6 antibody (ab96122) at 1/1000 dilution

Lane 1 : HeLa S3 whole cell lysate

Lane 2 : HepG2 whole cell lysate

Lysates/proteins at 30 µg per lane.

Predicted band size: 20 kDa

12% SDS-PAGE

Please note: All products are "FOR RESEARCH USE ONLY. NOT FOR USE IN DIAGNOSTIC PROCEDURES"

Our Abpromise to you: Quality guaranteed and expert technical support

- Replacement or refund for products not performing as stated on the datasheet
- Valid for 12 months from date of delivery
- Response to your inquiry within 24 hours

- We provide support in Chinese, English, French, German, Japanese and Spanish
- Extensive multi-media technical resources to help you
- We investigate all quality concerns to ensure our products perform to the highest standards

If the product does not perform as described on this datasheet, we will offer a refund or replacement. For full details of the Abpromise, please visit <https://www.abcam.co.jp/abpromise> or contact our technical team.

Terms and conditions

- Guarantee only valid for products bought direct from Abcam or one of our authorized distributors