




Anti-FABP4 antibody ab23693

★★★★★ [2 Abreviews](#) [6 References](#) [画像数 1](#)

製品の概要

製品名	Anti-FABP4 antibody
製品の詳細	Rabbit polyclonal to FABP4
由来種	Rabbit
アプリケーション	適用あり: WB
種交差性	交差種: Rat 交差が予測される動物種: Rabbit, Hamster 
免疫原	Synthetic peptide corresponding to Human FABP4 aa 103-118. Sequence: TTIKRRKREDDKLVE <div>  Run BLAST with  Run BLAST with </div>
特記事項	<p>The Life Science industry has been in the grips of a reproducibility crisis for a number of years. Abcam is leading the way in addressing this with our range of recombinant monoclonal antibodies and knockout edited cell lines for gold-standard validation. Please check that this product meets your needs before purchasing.</p> <p>If you have any questions, special requirements or concerns, please send us an inquiry and/or contact our Support team ahead of purchase. Recommended alternatives for this product can be found below, along with publications, customer reviews and Q&As</p>

製品の特性

製品の状態	Liquid
保存方法	Shipped at 4°C. Upon delivery aliquot and store at -20°C. Avoid freeze / thaw cycles.
バッファー	pH: 7.40 Preservative: 0.02% Sodium azide Constituents: Tris buffered saline, 50% Glycerol, 0.1% BSA
精製度	Protein A purified
ポリ/モノ	ポリクローナル
アイソタイプ	IgG

アプリケーション

The Abpromise guarantee **Abpromise保証は、次のテスト済みアプリケーションにおけるab23693の使用に適用されます**

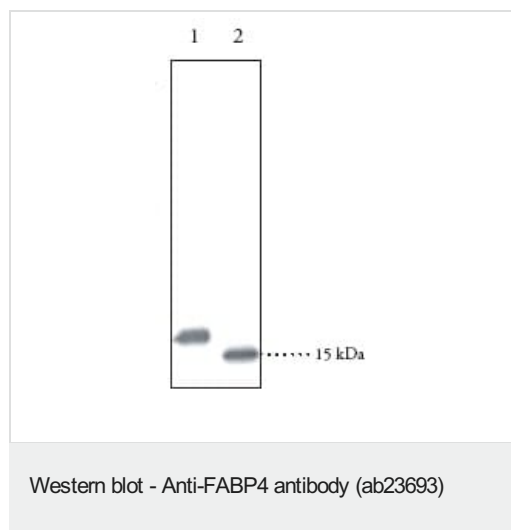
アプリケーションノートには、推奨の開始希釈率がありますが、適切な希釈率につきましてはご検討ください。

アプリケーション	Abreviews	特記事項
WB	★★★★★ (1)	Use a concentration of 2 µg/ml. Detects a band of approximately 15 kDa (predicted molecular weight: 15 kDa).

ターゲット情報

機能	Lipid transport protein in adipocytes. Binds both long chain fatty acids and retinoic acid. Delivers long-chain fatty acids and retinoic acid to their cognate receptors in the nucleus.
配列類似性	Belongs to the calycin superfamily. Fatty-acid binding protein (FABP) family.
ドメイン	Forms a beta-barrel structure that accommodates hydrophobic ligands in its interior.
細胞内局在	Cytoplasm. Nucleus. Depending on the nature of the ligand, a conformation change exposes a nuclear localization motif and the protein is transported into the nucleus. Subject to constitutive nuclear export.

画像



All lanes : Anti-FABP4 antibody (ab23693) at 2 µg/ml

Lane 1 : His-tagged recombinant rat ALBP lysate (1ug)

Lane 2 : rat brown fat (30ug)

Predicted band size: 15 kDa

Observed band size: 15 kDa

Please note: All products are "FOR RESEARCH USE ONLY. NOT FOR USE IN DIAGNOSTIC PROCEDURES"

Our Abpromise to you: Quality guaranteed and expert technical support

- Replacement or refund for products not performing as stated on the datasheet
- Valid for 12 months from date of delivery
- Response to your inquiry within 24 hours
- We provide support in Chinese, English, French, German, Japanese and Spanish
- Extensive multi-media technical resources to help you

- We investigate all quality concerns to ensure our products perform to the highest standards

If the product does not perform as described on this datasheet, we will offer a refund or replacement. For full details of the Abpromise, please visit <https://www.abcam.co.jp/abpromise> or contact our technical team.

Terms and conditions

- Guarantee only valid for products bought direct from Abcam or one of our authorized distributors