


Anti-EXOSC3 antibody ab104161

1 References [画像数 1](#)

医薬用外劇物

製品の概要

製品名	Anti-EXOSC3 antibody
製品の詳細	Rabbit polyclonal to EXOSC3
由来種	Rabbit
アプリケーション	適用あり: WB
種交差性	交差種: Human 交差が予測される動物種: Mouse, Cow 
免疫原	Recombinant fragment, corresponding to a region within amino acids 1-168 of Human EXOSC3 (AAH02437).
ポジティブ・コントロール	A431, Jurkat and Raji whole cell lysates; 293T cell lysate
特記事項	<p>The Life Science industry has been in the grips of a reproducibility crisis for a number of years. Abcam is leading the way in addressing this with our range of recombinant monoclonal antibodies and knockout edited cell lines for gold-standard validation. Please check that this product meets your needs before purchasing.</p> <p>If you have any questions, special requirements or concerns, please send us an inquiry and/or contact our Support team ahead of purchase. Recommended alternatives for this product can be found below, along with publications, customer reviews and Q&As</p>

製品の特性

製品の状態	Liquid
保存方法	Shipped at 4°C. Upon delivery aliquot. Store at -20°C or -80°C. Avoid freeze / thaw cycle.
バッファー	pH: 7.00 Preservative: 0.01% Thimerosal (merthiolate) Constituents: 1.21% Tris, 0.75% Glycine, 20% Glycerol (glycerin, glycerine)
精製度	Immunogen affinity purified
ポリ/モノ	ポリクローナル
アイソタイプ	IgG

アプリケーション

The Abpromise guarantee

Abpromise保証は、次のテスト済みアプリケーションにおけるab104161の使用に適用されます

アプリケーションノートには、推奨の開始希釈率がありますが、適切な希釈率につきましてはご確認ください。

アプリケーション	Abreviews	特記事項
WB		1/500 - 1/3000. Predicted molecular weight: 30 kDa.

ターゲット情報

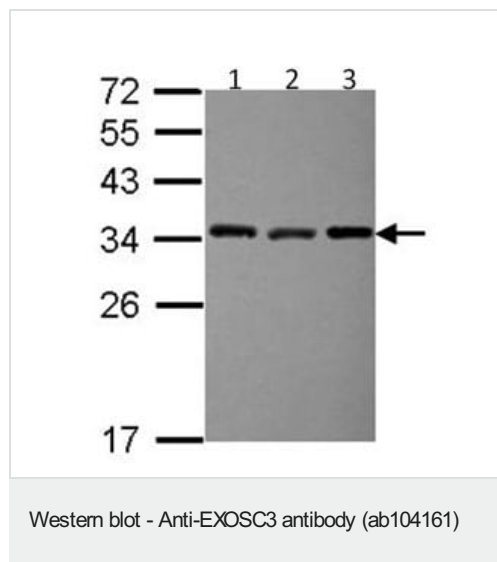
関連性

EXOSC3 is a component of the exosome 3'->5' exoribonuclease complex, a complex that degrades inherently unstable mRNAs containing AU-rich elements (AREs) within their 3' untranslated regions. It is required for the 3' processing of the 7S pre-RNA to the mature 5.8S rRNA. Has a 3'-5' exonuclease activity. [Swiss-Prot]

細胞内局在

Cytoplasm. Nucleus, nucleolus.

画像



All lanes : Anti-EXOSC3 antibody (ab104161) at 1/1000 dilution

Lane 1 : A431 whole cell lysate

Lane 2 : Jurkat whole cell lysate

Lane 3 : Raji whole cell lysate

Lysates/proteins at 30 µg per lane.

Predicted band size: 30 kDa

12% SDS-PAGE

Please note: All products are "FOR RESEARCH USE ONLY. NOT FOR USE IN DIAGNOSTIC PROCEDURES"

Our Abpromise to you: Quality guaranteed and expert technical support

- Replacement or refund for products not performing as stated on the datasheet
- Valid for 12 months from date of delivery
- Response to your inquiry within 24 hours
- We provide support in Chinese, English, French, German, Japanese and Spanish
- Extensive multi-media technical resources to help you
- We investigate all quality concerns to ensure our products perform to the highest standards

If the product does not perform as described on this datasheet, we will offer a refund or replacement. For full details of the Abpromise,

please visit <https://www.abcam.co.jp/abpromise> or contact our technical team.

Terms and conditions

- Guarantee only valid for products bought direct from Abcam or one of our authorized distributors