




Anti-ETFDH antibody ab103910

★★★★★ [1 Abreviews](#) [画像数 1](#)

製品の概要

| | |
|--------------|---|
| 製品名 | Anti-ETFDH antibody |
| 製品の詳細 | Goat polyclonal to ETFDH |
| 由来種 | Goat |
| アプリケーション | 適用あり: WB |
| 種交差性 | 交差種: Human 交差が予測される動物種: Rabbit, Cow, Dog, Pig, Zebrafish, Orangutan  |
| 免疫原 | Synthetic peptide: C-EHDQPAHLTLRD , corresponding to internal sequence amino acids 530-541 of Human ETFDH (NP_004444.2).  Run BLAST with  Run BLAST with |
| ポジティブ・コントロール | Human, Mouse and Rat Heart lysates, Human kidney lysate. |
| 特記事項 | <p>The Life Science industry has been in the grips of a reproducibility crisis for a number of years. Abcam is leading the way in addressing this with our range of recombinant monoclonal antibodies and knockout edited cell lines for gold-standard validation. Please check that this product meets your needs before purchasing.</p> <p>If you have any questions, special requirements or concerns, please send us an inquiry and/or contact our Support team ahead of purchase. Recommended alternatives for this product can be found below, along with publications, customer reviews and Q&As</p> |

製品の特性

| | |
|-----------|--|
| 製品の状態 | Liquid |
| 保存方法 | Shipped at 4°C. Upon delivery aliquot and store at -20°C. Avoid freeze / thaw cycles. |
| バッファー | pH: 7.30 Preservative: 0.02% Sodium azide Constituents: 0.5% BSA, Tris buffered saline |
| 精製度 | Immunogen affinity purified |
| 特記事項 (精製) | ab103910 was purified from goat serum by ammonium sulphate precipitation followed by antigen affinity chromatography using the immunizing peptide. |
| ポリ/モノ | ポリクローナル |

アプリケーション

The Abpromise guarantee

Abpromise保証は、次のテスト済みアプリケーションにおけるab103910の使用に適用されます

アプリケーションノートには、推奨の開始希釈率がありますが、適切な希釈率につきましてはご検討ください。

| アプリケーション | Abreviews | 特記事項 |
|----------|-----------|---|
| WB | ★★★★☆ (1) | Use a concentration of 1 - 3 µg/ml. Predicted molecular weight: 69 kDa. 1 hour primary incubation is recommended for this product. |

ターゲット情報

機能

Accepts electrons from ETF and reduces ubiquinone.

関連疾患

Defects in ETFDH are the cause of glutaric aciduria type 2C (GA2C) [MIM:231680]. GA2C is an autosomal recessively inherited disorder of fatty acid, amino acid, and choline metabolism. It is characterized by multiple acyl-CoA dehydrogenase deficiencies resulting in large excretion not only of glutaric acid, but also of lactic, ethylmalonic, butyric, isobutyric, 2-methyl-butyric, and isovaleric acids.

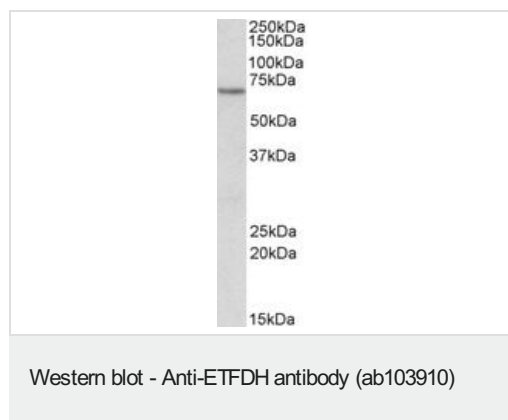
配列類似性

Belongs to the ETF-QO/fixC family.
Contains 1 4Fe-4S ferredoxin-type domain.

細胞内局在

Mitochondrion inner membrane.

画像



Anti-ETFDH antibody (ab103910) at 1 µg/ml + Human Kidney lysate at 35 µg

Predicted band size: 69 kDa

Observed band size: 70 kDa

Please note: All products are "FOR RESEARCH USE ONLY. NOT FOR USE IN DIAGNOSTIC PROCEDURES"

Our Abpromise to you: Quality guaranteed and expert technical support

- Replacement or refund for products not performing as stated on the datasheet
- Valid for 12 months from date of delivery

- Response to your inquiry within 24 hours
- We provide support in Chinese, English, French, German, Japanese and Spanish
- Extensive multi-media technical resources to help you
- We investigate all quality concerns to ensure our products perform to the highest standards

If the product does not perform as described on this datasheet, we will offer a refund or replacement. For full details of the Abpromise, please visit <https://www.abcam.co.jp/abpromise> or contact our technical team.

Terms and conditions

- Guarantee only valid for products bought direct from Abcam or one of our authorized distributors