




Anti-Estrogen Receptor beta antibody ab3576

★★★★★ [8 Abreviews](#) [94 References](#) [画像数 2](#)

製品の概要

製品名	Anti-Estrogen Receptor beta antibody
製品の詳細	Rabbit polyclonal to Estrogen Receptor beta
由来種	Rabbit
特異性	By Western blot, this antibody detects an ~55 kDa protein representing ER beta from Rat brain homogenate. Immunocytochemical staining of ER beta in cells overexpressing the Human protein results in nuclear staining.
アプリケーション	適用あり: ICC, WB
種交差性	交差種: Human 交差が予測される動物種: Hamster 
免疫原	Synthetic peptide corresponding to Rat Estrogen Receptor beta aa 467-485. Sequence: CSSTEDSKNKESQNLQSQ (Peptide available as ab5018) <div>  Run BLAST with  Run BLAST with </div>
ポジティブ・コントロール	WB: MCF7 whole cell lysate; T47and SK-BR3 nuclear extracts
特記事項	<p>The Life Science industry has been in the grips of a reproducibility crisis for a number of years. Abcam is leading the way in addressing this with our range of recombinant monoclonal antibodies and knockout edited cell lines for gold-standard validation. Please check that this product meets your needs before purchasing.</p> <p>If you have any questions, special requirements or concerns, please send us an inquiry and/or contact our Support team ahead of purchase. Recommended alternatives for this product can be found below, along with publications, customer reviews and Q&As</p>

製品の特性

製品の状態	Liquid
保存方法	Shipped at 4°C. Store at +4°C short term (1-2 weeks). Upon delivery aliquot. Store at -20°C or -80°C. Avoid freeze / thaw cycle.
バッファー	Preservative: 0.05% Sodium azide Constituents: 0.1% BSA, 99% PBS

精製度	Immunogen affinity purified
ポリ/モノ	ポリクローナル
アイソタイプ	IgG

アプリケーション

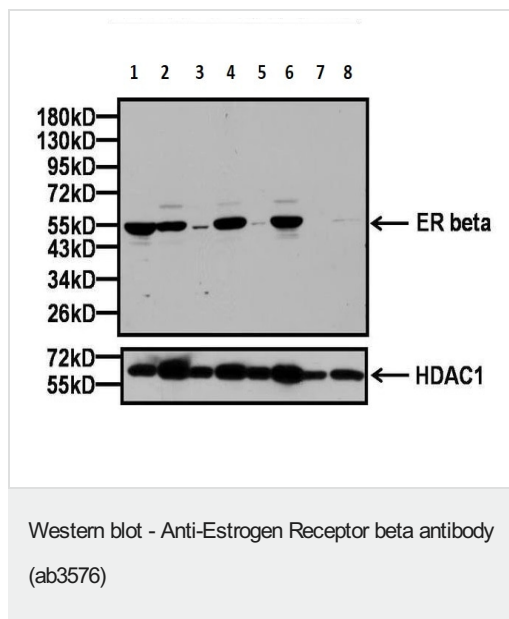
The Abpromise guarantee **Abpromise保証は、次のテスト済みアプリケーションにおけるab3576の使用に適用されます**
アプリケーションノートには、推奨の開始希釈率がありますが、適切な希釈率につきましてはご検討ください。

アプリケーション	Abreviews	特記事項
ICC		1/100 - 1/1000.
WB	★★★★★ (2)	Use a concentration of 1 µg/ml. Predicted molecular weight: 59 kDa.

ターゲット情報

機能	Nuclear hormone receptor. Binds estrogens with an affinity similar to that of ESR1, and activates expression of reporter genes containing estrogen response elements (ERE) in an estrogen-dependent manner. Isoform beta-cx lacks ligand binding ability and has no or only very low ere binding activity resulting in the loss of ligand-dependent transactivation ability. DNA-binding by ESR1 and ESR2 is rapidly lost at 37 degrees Celsius in the absence of ligand while in the presence of 17 beta-estradiol and 4-hydroxy-tamoxifen loss in DNA-binding at elevated temperature is more gradual.
組織特異性	Isoform beta-1 is expressed in testis and ovary, and at a lower level in heart, brain, placenta, liver, skeletal muscle, spleen, thymus, prostate, colon, bone marrow, mammary gland and uterus. Also found in uterine bone, breast, and ovarian tumor cell lines, but not in colon and liver tumors. Isoform beta-2 is expressed in spleen, thymus, testis and ovary and at a lower level in skeletal muscle, prostate, colon, small intestine, leukocytes, bone marrow, mammary gland and uterus. Isoform beta-3 is found in testis. Isoform beta-4 is expressed in testis, and at a lower level in spleen, thymus, ovary, mammary gland and uterus. Isoform beta-5 is expressed in testis, placenta, skeletal muscle, spleen and leukocytes, and at a lower level in heart, lung, liver, kidney, pancreas, thymus, prostate, colon, small intestine, bone marrow, mammary gland and uterus. Not expressed in brain.
配列類似性	Belongs to the nuclear hormone receptor family. NR3 subfamily. Contains 1 nuclear receptor DNA-binding domain.
ドメイン	Composed of three domains: a modulating N-terminal domain, a DNA-binding domain and a C-terminal ligand-binding domain.
細胞内局在	Nucleus.

画像



All lanes : Anti-Estrogen Receptor beta antibody (ab3576) at 1/1000 dilution

Lane 1 : MCF7 whole cell lysates

Lane 2 : MCF7 nuclear extract

Lane 3 : T47D whole cell lysates

Lane 4 : T47D nuclear extract

Lane 5 : SK-BR-3 whole cell lysates

Lane 6 : SK-BR-3 nuclear extract

Lane 7 : Hs 578T whole cell lysates

Lane 8 : Hs 578T nuclear extract

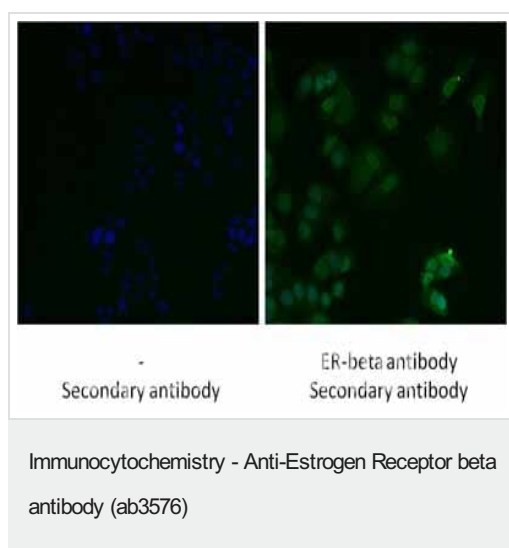
Lysates/proteins at 20 µg per lane.

Secondary

All lanes : HRP-conjugated goat anti-rabbit IgG at 1/40000 dilution

Predicted band size: 59 kDa

HDAC1 polyclonal antibody (bottom panel) at a dilution of 1/1000 overnight at 4C, followed by an HRP-conjugated goat anti-rabbit IgG secondary antibody at a dilution of 1/40,000. Chemiluminescent detection.



Immunofluorescent analysis using Estrogen Receptor beta polyclonal antibody (ab3576) shows nuclear localization of Estrogen Receptor beta in MCF7 cells. Formalin fixed cells were permeabilized with 0.1% Triton X-100 in TBS for 10 minutes at room temperature. Cells were blocked with 1% BSA for 15 minutes at room temperature. Cells were probed with a rabbit polyclonal antibody recognizing Estrogen Receptor beta (ab3576), at a dilution of 1:100 for 1 hour at room temperature. Cells were washed with PBS and incubated with DyLight 488 goat-anti-rabbit IgG secondary antibody at a dilution of 1:400 for 30 minutes at room temperature. Nuclei (blue) were stained with Hoechst 33342 dye. Images were taken at 20X magnification.

Please note: All products are "FOR RESEARCH USE ONLY. NOT FOR USE IN DIAGNOSTIC PROCEDURES"

Our Abpromise to you: Quality guaranteed and expert technical support

- Replacement or refund for products not performing as stated on the datasheet
- Valid for 12 months from date of delivery
- Response to your inquiry within 24 hours

- We provide support in Chinese, English, French, German, Japanese and Spanish
- Extensive multi-media technical resources to help you
- We investigate all quality concerns to ensure our products perform to the highest standards

If the product does not perform as described on this datasheet, we will offer a refund or replacement. For full details of the Abpromise, please visit <https://www.abcam.co.jp/abpromise> or contact our technical team.

Terms and conditions

- Guarantee only valid for products bought direct from Abcam or one of our authorized distributors