

Anti-Estrogen Receptor beta 1 antibody [ERb455] - C-terminal ab187291

★★★★★ [7 Abreviews](#) [4 References](#) [画像数 7](#)

製品の概要

製品名	Anti-Estrogen Receptor beta 1 antibody [ERb455] - C-terminal
製品の詳細	Mouse monoclonal [ERb455] to Estrogen Receptor beta 1 - C-terminal
由来種	Mouse
特異性	Estrogen receptors (ER) are members of the steroid/thyroid hormone receptor superfamily of ligand-activated transcription factors. Estrogen receptors, including ER-alpha and ER-beta, contain DNA binding and ligand binding domains and are critically involved in regulating the normal function of reproductive tissues. They are located in the nucleus, though some estrogen receptors associate with the cell surface membrane and can be rapidly activated by exposure of cells to estrogen. ER-alpha and ER-beta are differentially activated by various ligands. Receptor-ligand interactions trigger a cascade of events, including dissociation from heat shock proteins, receptor dimerization, phosphorylation and the association of the hormone activated receptor with specific regulatory elements in target genes. Evidence suggests that ER-alpha and ER-beta may be regulated by distinct mechanisms even though they share many functional characteristics.
アプリケーション	適用あり: ICC/IF, WB, IHC-P, Flow Cyt
種交差性	交差種: Mouse, Rat, Sheep, Horse, Human, Pig, Monkey
免疫原	Recombinant fragment corresponding to Human Estrogen Receptor beta 1 (C terminal). Database link: Q92731
ポジティブ・コントロール	Flow Cyt: BT474 and MCF-7 cells IHC-P: Ovarian carcinoma, breast carcinoma tissues, gastric carcinoma, and bladder carcinoma tissues. WB: MCF7 cell lysate.
特記事項	<p>The Life Science industry has been in the grips of a reproducibility crisis for a number of years. Abcam is leading the way in addressing this with our range of recombinant monoclonal antibodies and knockout edited cell lines for gold-standard validation. Please check that this product meets your needs before purchasing.</p> <p>If you have any questions, special requirements or concerns, please send us an inquiry and/or contact our Support team ahead of purchase. Recommended alternatives for this product can be found below, along with publications, customer reviews and Q&As</p>

製品の特性

製品の状態 Liquid

保存方法	Shipped at 4°C. Store at +4°C short term (1-2 weeks). Upon delivery aliquot. Store at -20°C long term. Avoid freeze / thaw cycle.
バッファー	pH: 7.2 Preservative: 0.05% Sodium azide Constituents: 99% PBS, 0.05% BSA
精製度	Protein A purified
特記事項 (精製)	ab187291 was purified from Bioreactor concentrate.
ポリ/モノ	モノクローナル
クローン名	ERb455
アイソタイプ	IgG2a

アプリケーション

The Abpromise guarantee

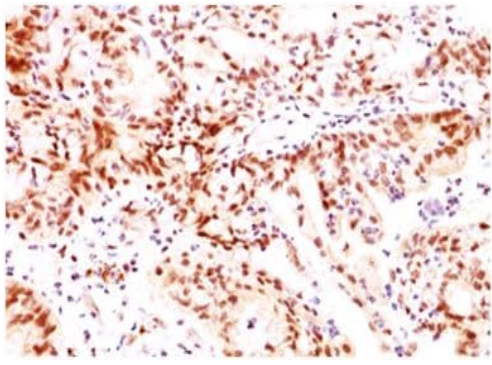
Abpromise保証は、
次のテスト済みアプリケーションにおけるab187291の使用に適用されます

アプリケーションノートには、推奨の開始希釈率がありますが、適切な希釈率につきましてはご検討ください。

アプリケーション	Abreviews	特記事項
ICC/IF	★★★★★ (1)	Use at an assay dependent concentration.
WB		Use a concentration of 1 - 2 µg/ml. Predicted molecular weight: 59 kDa.
IHC-P	★★★★★ (6)	Use a concentration of 1 - 2 µg/ml. Staining of formalin-fixed tissues requires heating tissue sections in 10mM Tris with 1mM EDTA, pH 9.0, for 45 min at 95°C followed by cooling at room temperature for 20 minutes.
Flow Cyt		Use 1-2µg for 10 ⁶ cells.

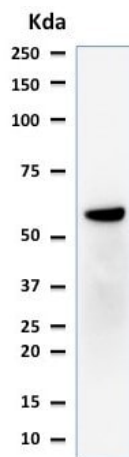
ターゲット情報

関連性	<p>This gene encodes a member of the family of estrogen receptors and superfamily of nuclear receptor transcription factors. The gene product contains an N-terminal DNA binding domain and C-terminal ligand binding domain and is localized to the nucleus, cytoplasm, and mitochondria. Upon binding to 17beta-estradiol or related ligands, the encoded protein forms homo- or hetero-dimers that interact with specific DNA sequences to activate transcription. Some isoforms dominantly inhibit the activity of other estrogen receptor family members. Several alternatively spliced transcript variants of this gene have been described, but the full-length nature of some of these variants has not been fully characterized.</p>
細胞内局在	Nuclear
画像	



Immunohistochemical analysis of formalin-fixed, paraffin-embedded human ovarian cancer tissue labeling Estrogen Receptor beta 1 with ab187291 at 1 µg/ml.

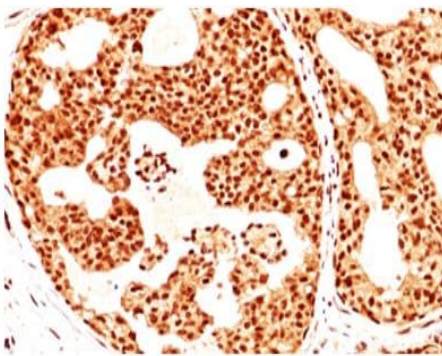
Immunohistochemistry (Formalin/PFA-fixed paraffin-embedded sections) - Anti-Estrogen Receptor beta 1 antibody [ERb455] - C-terminal (ab187291)



Anti-Estrogen Receptor beta 1 antibody [ERb455] - C-terminal (ab187291) at 2 µg/ml + MCF7 (human breast adenocarcinoma cell line) whole cell lysate

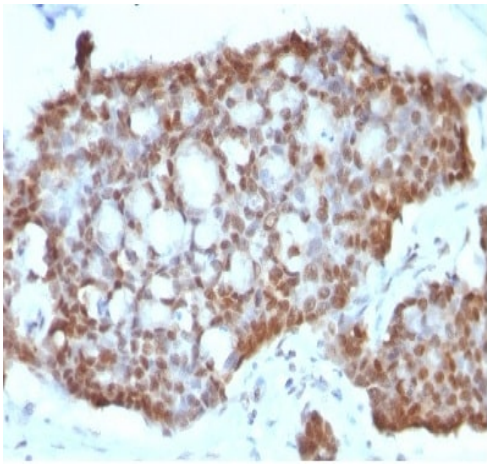
Predicted band size: 59 kDa

Western blot - Anti-Estrogen Receptor beta 1 antibody [ERb455] - C-terminal (ab187291)



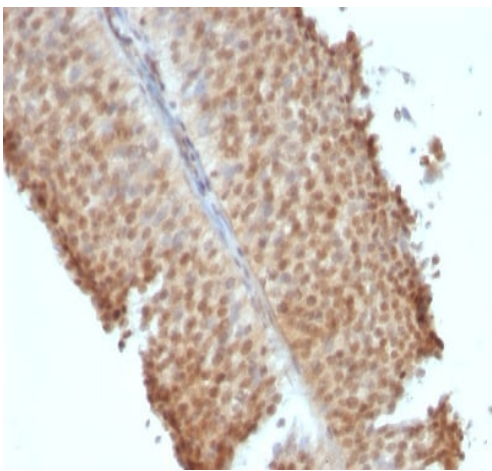
Immunohistochemical analysis of formalin-fixed, paraffin-embedded human breast cancer tissue labeling Estrogen Receptor beta 1 with ab187291 at 1 µg/ml.

Immunohistochemistry (Formalin/PFA-fixed paraffin-embedded sections) - Anti-Estrogen Receptor beta 1 antibody [ERb455] - C-terminal (ab187291)



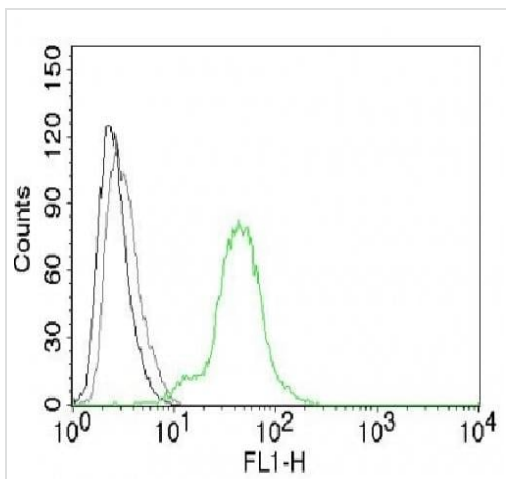
Immunohistochemical analysis of formalin-fixed, paraffin-embedded human Gastric Carcinoma tissue labeling Estrogen Receptor beta 1 with ab187291 at 1 µg/ml.

Immunohistochemistry (Formalin/PFA-fixed paraffin-embedded sections) - Anti-Estrogen Receptor beta 1 antibody [ERb455] - C-terminal (ab187291)



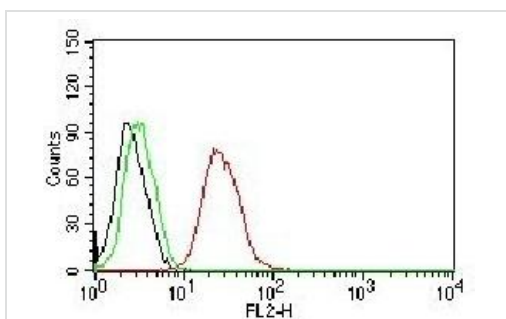
Immunohistochemical analysis of formalin-fixed, paraffin-embedded human Bladder Carcinoma tissue labeling Estrogen Receptor beta 1 with ab187291 at 1 µg/ml.

Immunohistochemistry (Formalin/PFA-fixed paraffin-embedded sections) - Anti-Estrogen Receptor beta 1 antibody [ERb455] - C-terminal (ab187291)



Flow Cytometry - Anti-Estrogen Receptor beta 1 antibody [ERb455] - C-terminal (ab187291)

Flow cytometry analysis of BT474 (human ductal breast epithelial tumor cell line) cells labelling ER beta with ab187291 at 0.5 ug/ml. Black-cells alone, Grey-isotype control, Green-AF4888-labeled ER beta 1.



Flow Cytometry - Anti-Estrogen Receptor beta 1 antibody [ERb455] - C-terminal (ab187291)

Flow cytometry analysis of MCF-7 (human breast adenocarcinoma cell line) cells labelling ER beta with ab187291 at 0.5 ug/ml. Black-cells alone, Green-isotype control, Red-PE labeled ER-beta 1.

Please note: All products are "FOR RESEARCH USE ONLY. NOT FOR USE IN DIAGNOSTIC PROCEDURES"

Our Abpromise to you: Quality guaranteed and expert technical support

- Replacement or refund for products not performing as stated on the datasheet
- Valid for 12 months from date of delivery
- Response to your inquiry within 24 hours
- We provide support in Chinese, English, French, German, Japanese and Spanish
- Extensive multi-media technical resources to help you
- We investigate all quality concerns to ensure our products perform to the highest standards

If the product does not perform as described on this datasheet, we will offer a refund or replacement. For full details of the Abpromise, please visit <https://www.abcam.co.jp/abpromise> or contact our technical team.

Terms and conditions

- Guarantee only valid for products bought direct from Abcam or one of our authorized distributors