

Anti-ERp57 antibody [EPR10679(B)] ab154197

KO 評価済 リコンビナント RabMAb

画像数 9

製品の概要

製品名	Anti-ERp57 antibody [EPR10679(B)]
製品の詳細	Rabbit monoclonal [EPR10679(B)] to ERp57
由来種	Rabbit
アプリケーション	適用あり: WB, IHC-P 適用なし: Flow Cyt, ICC/IF or IP
種交差性	交差種: Human
免疫原	Synthetic peptide. This information is proprietary to Abcam and/or its suppliers.
ポジティブ・コントロール	HeLa, HepG2, Daudi and 293T cell lysates; Human pancreas and stomach tissues.
特記事項	This product is a recombinant monoclonal antibody, which offers several advantages including: <ul style="list-style-type: none"> - High batch-to-batch consistency and reproducibility - Improved sensitivity and specificity - Long-term security of supply - Animal-free production For more information see here . Our RabMAb [®] technology is a patented hybridoma-based technology for making rabbit monoclonal antibodies. For details on our patents, please refer to RabMAb[®] patents . Mouse, Rat: We have preliminary internal testing data to indicate this antibody may not react with these species. Please contact us for more information.

製品の特性

製品の状態	Liquid
保存方法	Shipped at 4°C. Store at -20°C.
バッファー	pH: 7.2 Preservative: 0.01% Sodium azide Constituents: 9% PBS, 40% Glycerol (glycerin, glycerine), 0.05% BSA, 50% Tissue culture supernatant
精製度	Protein A purified
ポリ/モノ	モノクローナル

クローン名 EPR10679(B)
アイソタイプ IgG

アプリケーション

The Abpromise guarantee Abpromise保証は、 次のテスト済みアプリケーションにおけるab154197の使用に適用されます
アプリケーションノートには、推奨の開始希釈率がありますが、適切な希釈率につきましてはご確認ください。

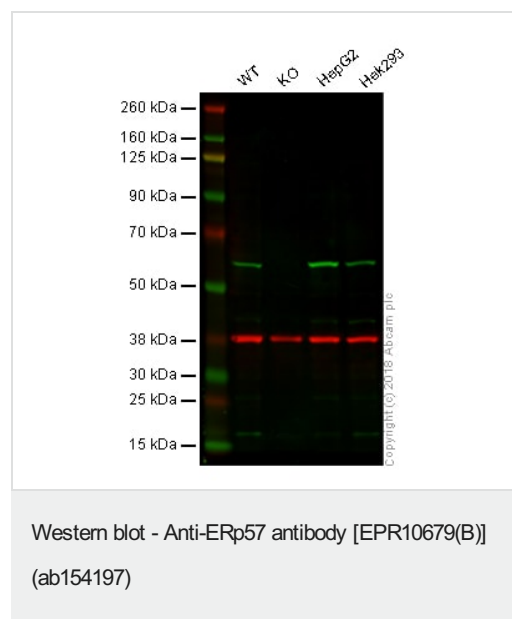
アプリケーション	Abreviews	特記事項
WB		1/1000 - 1/10000. Predicted molecular weight: 57 kDa.
IHC-P		1/50 - 1/100. Perform heat mediated antigen retrieval before commencing with IHC staining protocol.

追加情報 Is unsuitable for Flow Cyt, ICC/IF or IP.

ターゲット情報

組織特異性 Detected in the flagellum and head region of spermatozoa (at protein level).
配列類似性 Belongs to the protein disulfide isomerase family.
Contains 2 thioredoxin domains.
細胞内局在 Endoplasmic reticulum lumen. Melanosome. Identified by mass spectrometry in melanosome fractions from stage I to stage IV.

画像



Lane 1: Wild-type HAP1 whole cell lysate (20 µg)

Lane 2: ERp57 knockout HAP1 whole cell lysate (20 µg)

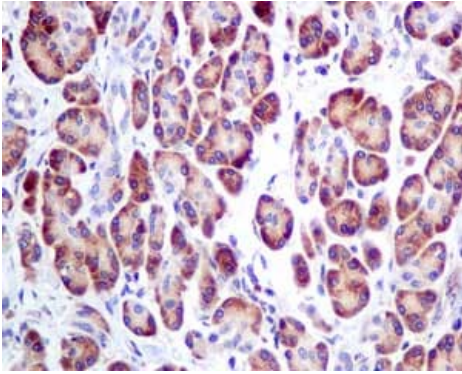
Lane 3: HepG2 whole cell lysate (20 µg)

Lane 4: Hek293 whole cell lysate (20 µg)

Lanes 1 - 4: Merged signal (red and green). Green - ab154197 observed at 57 kDa. Red - loading control, **ab9484**, observed at 37 kDa.

ab154197 was shown to specifically react with ERp57 in wild-type HAP1 cells as signal was lost in ERp57 knockout cells. Wild-type and ERp57 knockout samples were subjected to SDS-PAGE.

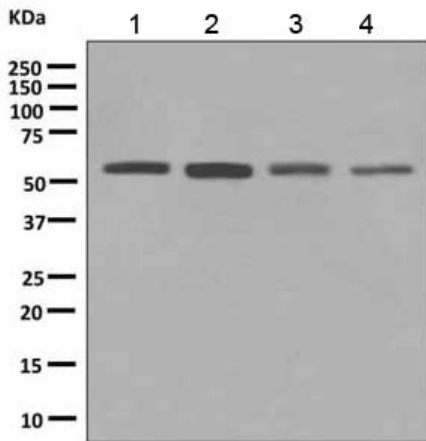
ab154197 and **ab9484** (Mouse anti-GAPDH loading control) were incubated overnight at 4°C at 1/1000 dilution and 1/20000 dilution respectively. Blots were developed with Goat anti-Rabbit IgG H&L (IRDye® 800CW) preabsorbed **ab216773** and Goat anti-Mouse IgG H&L (IRDye® 680RD) preabsorbed **ab216776** secondary antibodies at 1/20000 dilution for 1 hour at room temperature before imaging.



Immunohistochemistry (Formalin/PFA-fixed paraffin-embedded sections) - Anti-ERp57 antibody [EPR10679(B)] (ab154197)

Immunohistochemical analysis of paraffin-embedded Human pancreas tissue labeling ERp57 with ab154197 at 1/50 dilution

Perform heat mediated antigen retrieval before commencing with IHC staining protocol.



Western blot - Anti-ERp57 antibody [EPR10679(B)] (ab154197)

All lanes : Anti-ERp57 antibody [EPR10679(B)] (ab154197) at 1/1000 dilution

Lane 1 : HeLa cell lysate

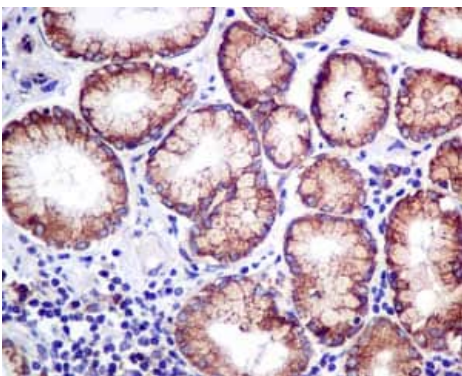
Lane 2 : HepG2 cell lysate

Lane 3 : 293T cell lysate

Lane 4 : Daudi cell lysate

Lysates/proteins at 10 µg per lane.

Predicted band size: 57 kDa



Immunohistochemistry (Formalin/PFA-fixed paraffin-embedded sections) - Anti-ERp57 antibody [EPR10679(B)] (ab154197)

Immunohistochemical analysis of paraffin-embedded Human stomach tissue labeling ERp57 with ab154197 at 1/50 dilution

Perform heat mediated antigen retrieval before commencing with IHC staining protocol.

Immunohistochemistry (Formalin/PFA-fixed paraffin-embedded sections) - Anti-ERp57 antibody
[EPR10679(B)] (ab154197)

Immunohistochemical analysis of paraffin embedded Human endometrial carcinoma tissue using ab154197 showing +ve staining.

Perform heat mediated antigen retrieval before commencing with IHC staining protocol.

Immunohistochemistry (Formalin/PFA-fixed paraffin-embedded sections) - Anti-ERp57 antibody
[EPR10679(B)] (ab154197)

Immunohistochemical analysis of paraffin embedded Human normal brain tissue using ab154197 showing +ve staining.

Perform heat mediated antigen retrieval before commencing with IHC staining protocol.

Immunohistochemistry (Formalin/PFA-fixed paraffin-embedded sections) - Anti-ERp57 antibody
[EPR10679(B)] (ab154197)

Immunohistochemical analysis of paraffin embedded Human cervical carcinoma tissue using ab154197 showing +ve staining.

Perform heat mediated antigen retrieval before commencing with IHC staining protocol.

Immunohistochemistry (Formalin/PFA-fixed paraffin-embedded sections) - Anti-ERp57 antibody
[EPR10679(B)] (ab154197)

Immunohistochemical analysis of paraffin embedded Human thyroid gland carcinoma tissue using ab154197 showing +ve staining.

Perform heat mediated antigen retrieval before commencing with IHC staining protocol.

Why choose a recombinant antibody?



Research with confidence
Consistent and reproducible results



Long-term and scalable supply
Recombinant technology



Success from the first experiment
Confirmed specificity



Ethical standards compliant
Animal-free production

Anti-ERp57 antibody [EPR10679(B)] (ab154197)

Please note: All products are "FOR RESEARCH USE ONLY. NOT FOR USE IN DIAGNOSTIC PROCEDURES"

Our Abpromise to you: Quality guaranteed and expert technical support

- Replacement or refund for products not performing as stated on the datasheet
- Valid for 12 months from date of delivery
- Response to your inquiry within 24 hours

- We provide support in Chinese, English, French, German, Japanese and Spanish
- Extensive multi-media technical resources to help you
- We investigate all quality concerns to ensure our products perform to the highest standards

If the product does not perform as described on this datasheet, we will offer a refund or replacement. For full details of the Abpromise, please visit <https://www.abcam.co.jp/abpromise> or contact our technical team.

Terms and conditions

- Guarantee only valid for products bought direct from Abcam or one of our authorized distributors