


Anti-ERGIC3 antibody [EPR8141] ab129179

KO 評価済 リコンビナント RabMAb

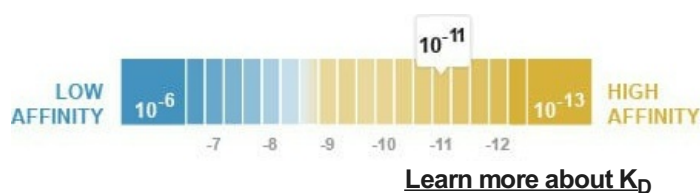
★★★★★ 1 Abreviews 3 References 画像数 6

製品の概要

製品名	Anti-ERGIC3 antibody [EPR8141]
製品の詳細	Rabbit monoclonal [EPR8141] to ERGIC3
由来種	Rabbit
アプリケーション	適用あり: WB, IHC-P, ICC/IF
種交差性	交差種: Human 交差が予測される動物種: Mouse, Rat 
免疫原	Synthetic peptide within Human ERGIC3 aa 100-200. The exact sequence is proprietary.
ポジティブ・コントロール	WB: HepG2, MCF7, 293T, K562 and HeLa cell lysates. IHC-P: Human brain tissue. ICC: HeLa cells.
特記事項	<p>This product is a recombinant monoclonal antibody, which offers several advantages including:</p> <ul style="list-style-type: none"> - High batch-to-batch consistency and reproducibility - Improved sensitivity and specificity - Long-term security of supply - Animal-free production <p>For more information see here.</p> <p>Our RabMAb[®] technology is a patented hybridoma-based technology for making rabbit monoclonal antibodies. For details on our patents, please refer to RabMAb[®] patents.</p>

製品の特性

製品の状態	Liquid
保存方法	Shipped at 4°C. Store at -20°C. Stable for 12 months at -20°C.
解離定数 (K _D 値)	K _D = 5.36 x 10 ⁻¹¹ M



バッファー	pH: 7.20
-------	----------

	Preservative: 0.01% Sodium azide
	Constituents: 9% PBS, 40% Glycerol (glycerin, glycerine), 0.05% BSA, 50% Tissue culture supernatant
精製度	Protein A purified
ポリ/モノ	モノクローナル
クローン名	EPR8141
アイソタイプ	IgG

アプリケーション

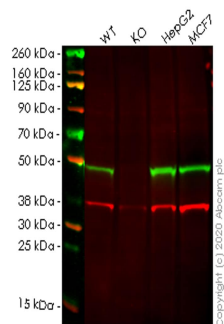
The Abpromise guarantee Abpromise保証は、 次のテスト済みアプリケーションにおけるab129179の使用に適用されます
アプリケーションノートには、推奨の開始希釈率がありますが、適切な希釈率につきましてはご検討ください。

アプリケーション	Abreviews	特記事項
WB		1/10000 - 1/50000. Detects a band of approximately 50 kDa (predicted molecular weight: 43 kDa).
IHC-P		1/100 - 1/250. Perform heat mediated antigen retrieval before commencing with IHC staining protocol.
ICC/IF	★★★★★ (1)	1/250 - 1/500.

ターゲット情報

機能	Possible role in transport between endoplasmic reticulum and Golgi.
配列類似性	Belongs to the ERGIC family.
細胞内局在	Endoplasmic reticulum-Golgi intermediate compartment membrane. Golgi apparatus > cis-Golgi network membrane. Endoplasmic reticulum membrane. Cycles between the endoplasmic reticulum and the Golgi.

画像



Western blot - Anti-ERGIC3 antibody [EPR8141]
(ab129179)

All lanes : Anti-ERGIC3 antibody [EPR8141] (ab129179) at 1/1000 dilution

Lane 1 : Wild-type HEK293T cell lysate

Lane 2 : ERGIC3 knockout HEK293T cell lysate

Lane 3 : HepG2 cell lysate

Lane 4 : MCF-7 cell lysate

Lysates/proteins at 20 µg per lane.

Secondary

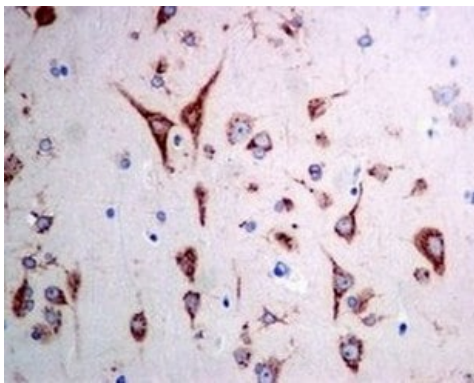
All lanes : Goat anti-Rabbit IgG H&L (IRDye® 800CW) preadsorbed ([ab216773](#)) at 1/10000 dilution

Predicted band size: 43 kDa

Observed band size: 50 kDa

Lanes 1-4: Merged signal (red and green). Green - ab129179 observed at 50 kDa. Red - loading control [ab8245](#) observed at 36 kDa.

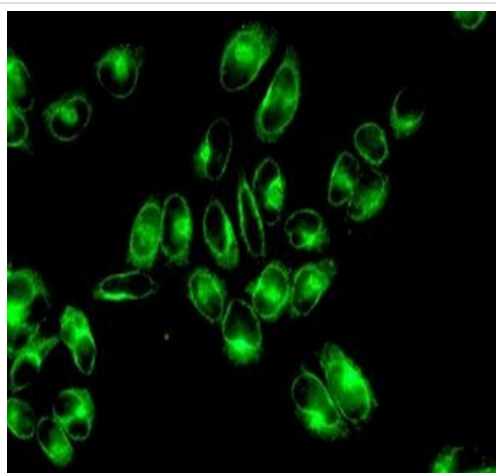
ab129179 Anti-ERGIC3 antibody [EPR8141] was shown to specifically react with ERGIC3 in wild-type HEK293T cells. Loss of signal was observed when knockout cell line [ab266489](#) (knockout cell lysate [ab257941](#)) was used. Wild-type and ERGIC3 knockout samples were subjected to SDS-PAGE. ab129179 and Anti-GAPDH antibody [6C5] - Loading Control ([ab8245](#)) were incubated at room temperature for 2.5 hours at 1 in 1000 dilution and 1 in 20000 dilution respectively. Blots were developed with Goat anti-Rabbit IgG H&L (IRDye® 800CW) preadsorbed ([ab216773](#)) and Goat anti-Mouse IgG H&L (IRDye® 680RD) preadsorbed ([ab216776](#)) secondary antibodies at 1 in 20000 dilution for 1 hour at room temperature before imaging.



Immunohistochemistry (Formalin/PFA-fixed paraffin-embedded sections) - Anti-ERGIC3 antibody [EPR8141] (ab129179)

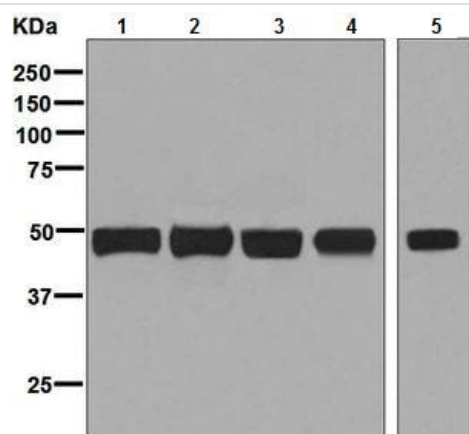
ab129179, at 1/100, staining ERGIC3 in paraffin embedded Human brain tissue by Immunohistochemistry.

Perform heat mediated antigen retrieval before commencing with IHC staining protocol.



Immunocytochemistry/ Immunofluorescence - Anti-ERGIC3 antibody [EPR8141] (ab129179)

ab129179, at 1/250, staining ERGIC3 in HeLa cells by Immunofluorescence.



Western blot - Anti-ERGIC3 antibody [EPR8141] (ab129179)

All lanes : Anti-ERGIC3 antibody [EPR8141] (ab129179) at 1/10000 dilution

Lane 1 : HepG2 cell lysate

Lane 2 : MCF7 cell lysate

Lane 3 : 293T cell lysate

Lane 4 : K562 cell lysate

Lane 5 : HeLa cell lysate

Lysates/proteins at 10 µg per lane.

Secondary

All lanes : Goat anti-rabbit HRP conjugated at 1/2000 dilution

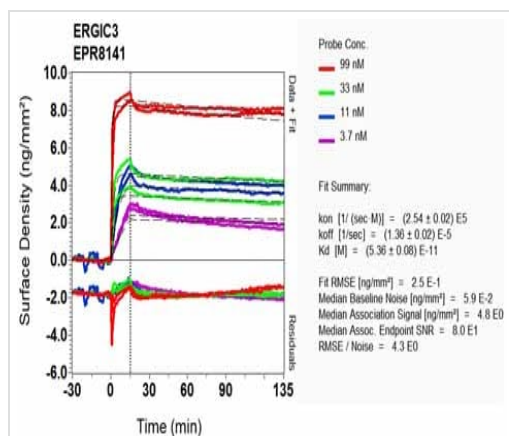
Predicted band size: 43 kDa

Observed band size: 50 kDa

Equilibrium dissociation constant (K_D)

Learn more about K_D

[Click here to learn more about \$K_D\$](#)



OI-RD Scanning - Anti-ERGIC3 antibody [EPR8141]
(ab129179)

Why choose a recombinant antibody?

Research with confidence
Consistent and reproducible results

Long-term and scalable supply
Recombinant technology

Success from the first experiment
Confirmed specificity

Ethical standards compliant
Animal-free production

Anti-ERGIC3 antibody [EPR8141] (ab129179)

Please note: All products are "FOR RESEARCH USE ONLY. NOT FOR USE IN DIAGNOSTIC PROCEDURES"

Our Abpromise to you: Quality guaranteed and expert technical support

- Replacement or refund for products not performing as stated on the datasheet
- Valid for 12 months from date of delivery
- Response to your inquiry within 24 hours
- We provide support in Chinese, English, French, German, Japanese and Spanish
- Extensive multi-media technical resources to help you
- We investigate all quality concerns to ensure our products perform to the highest standards

If the product does not perform as described on this datasheet, we will offer a refund or replacement. For full details of the Abpromise, please visit <https://www.abcam.co.jp/abpromise> or contact our technical team.

Terms and conditions

- Guarantee only valid for products bought direct from Abcam or one of our authorized distributors